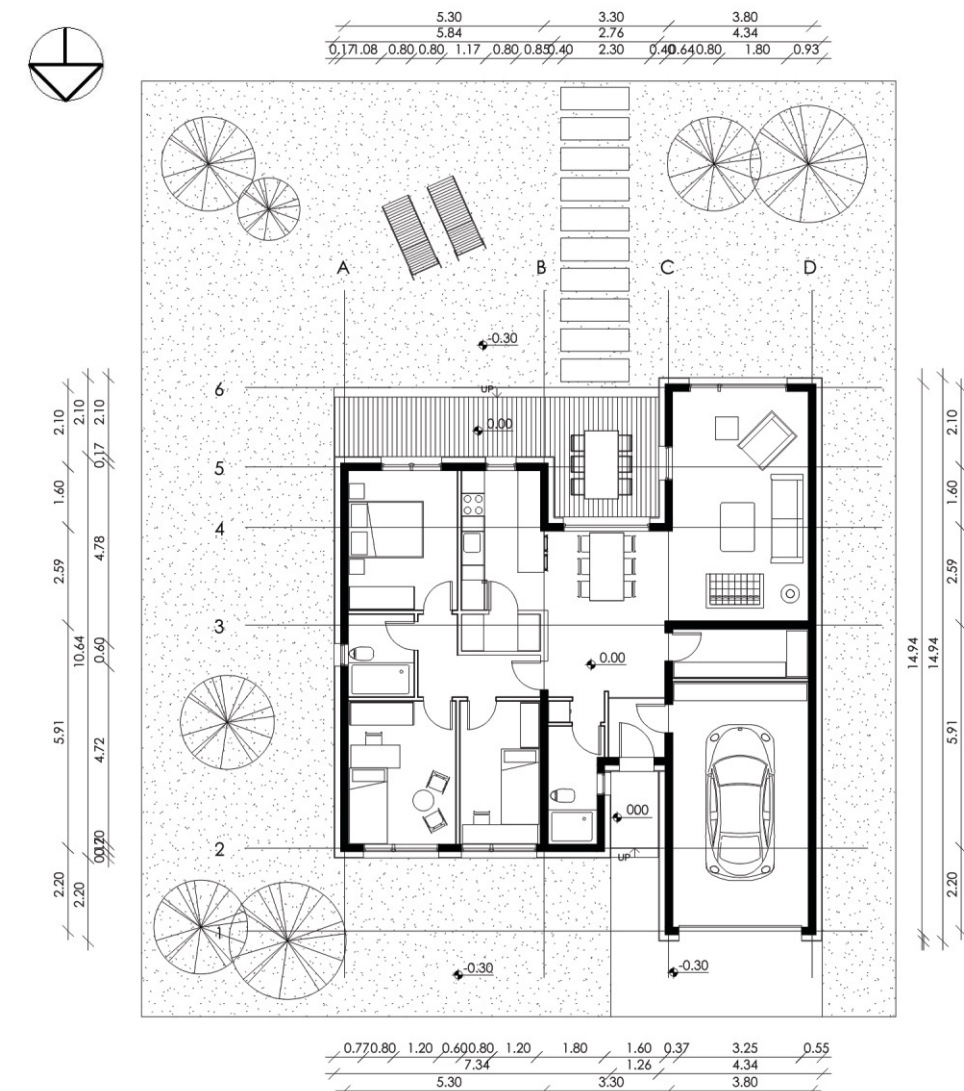
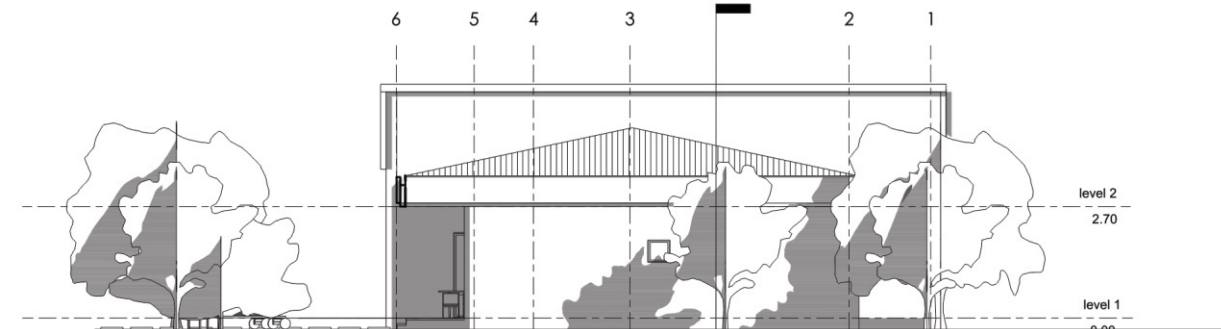


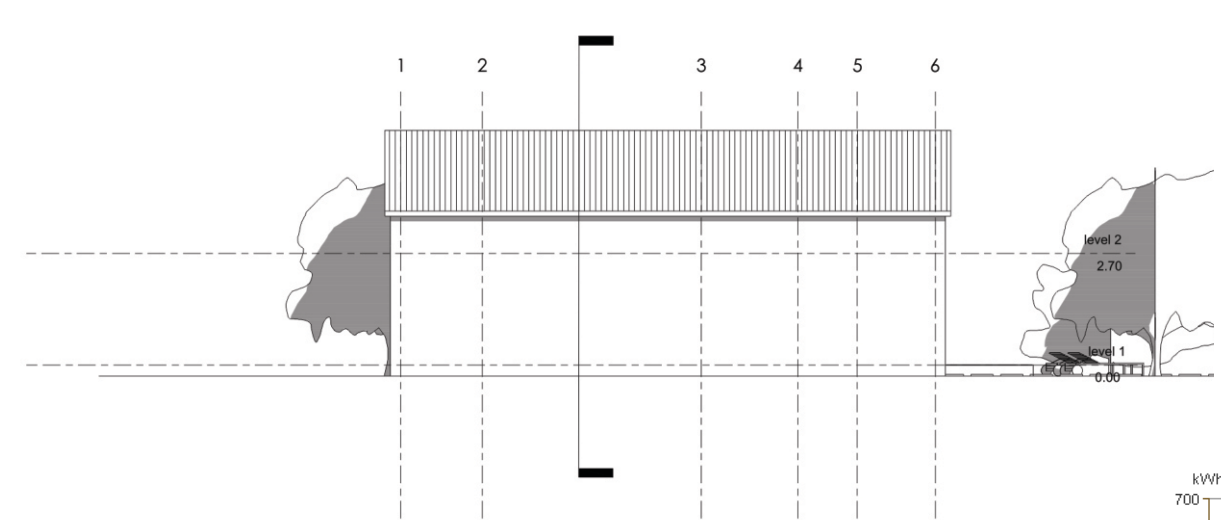
I osnova 1 : 200



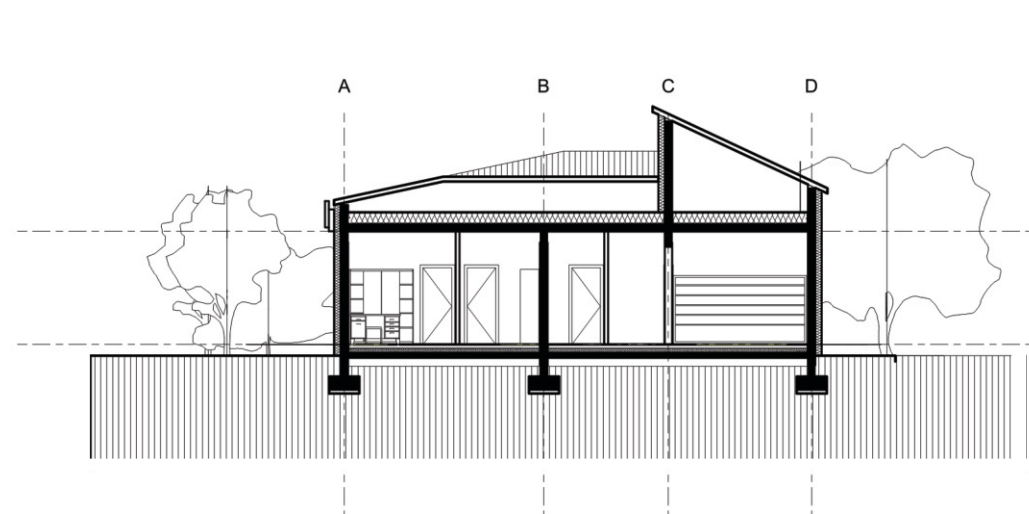
I istocni izgled 1 : 200



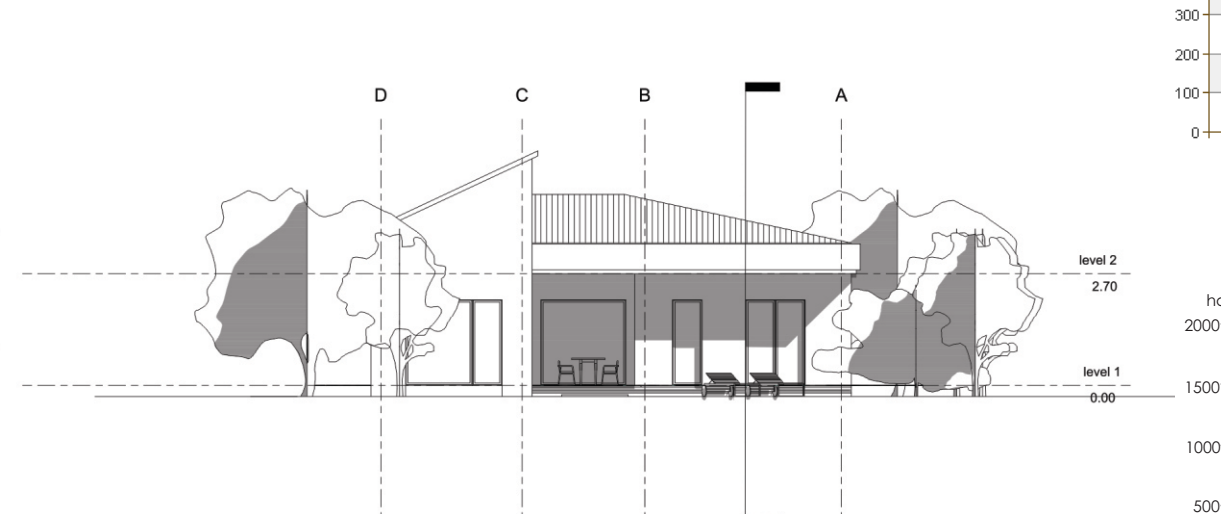
I zapadni izgled 1 : 200



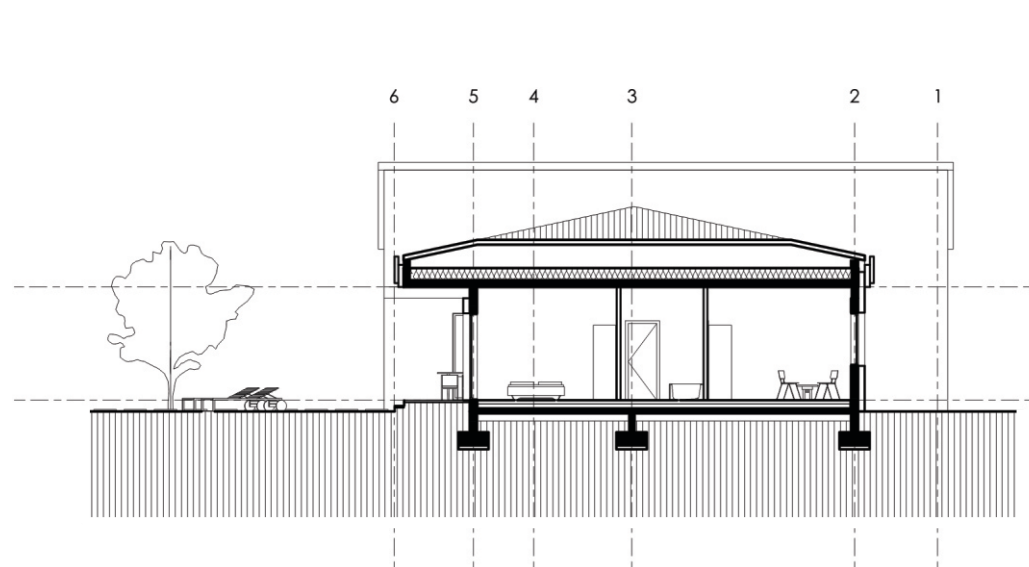
I presek 1 1 : 200



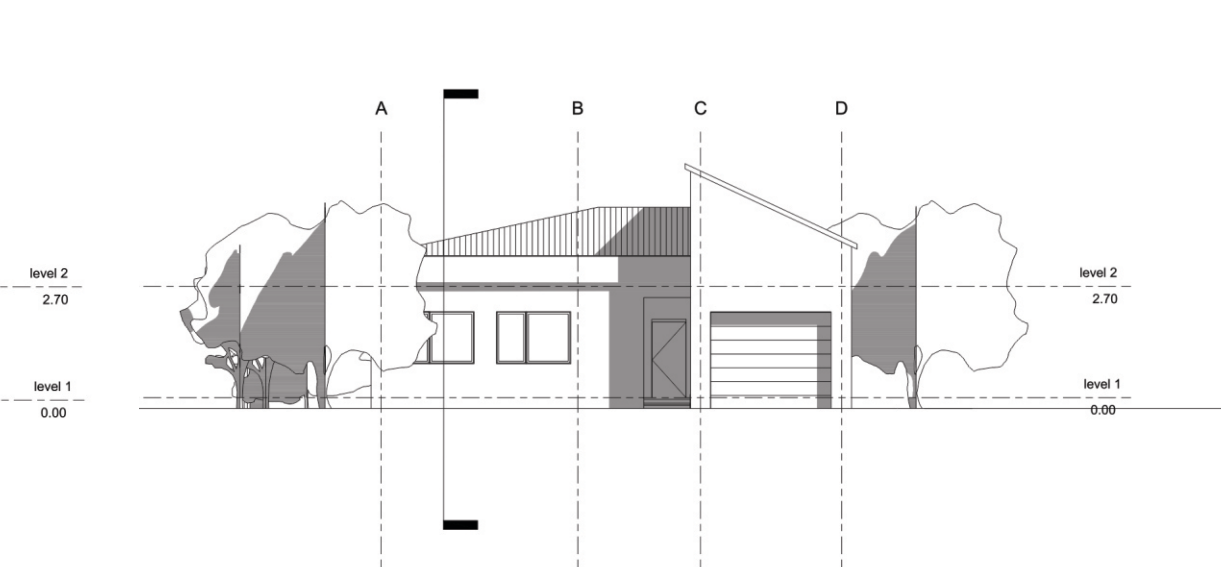
I juzni izgled 1 : 200



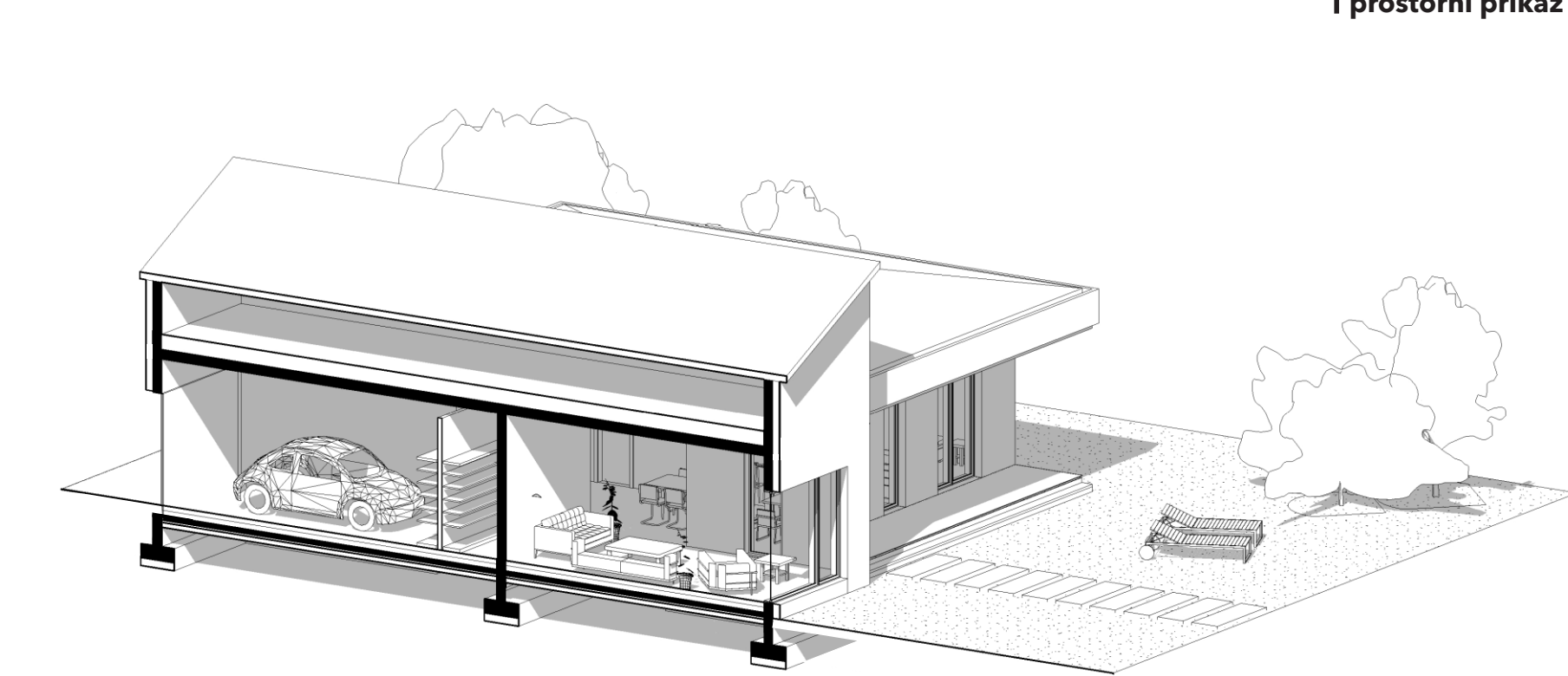
I presek 2 1 : 200



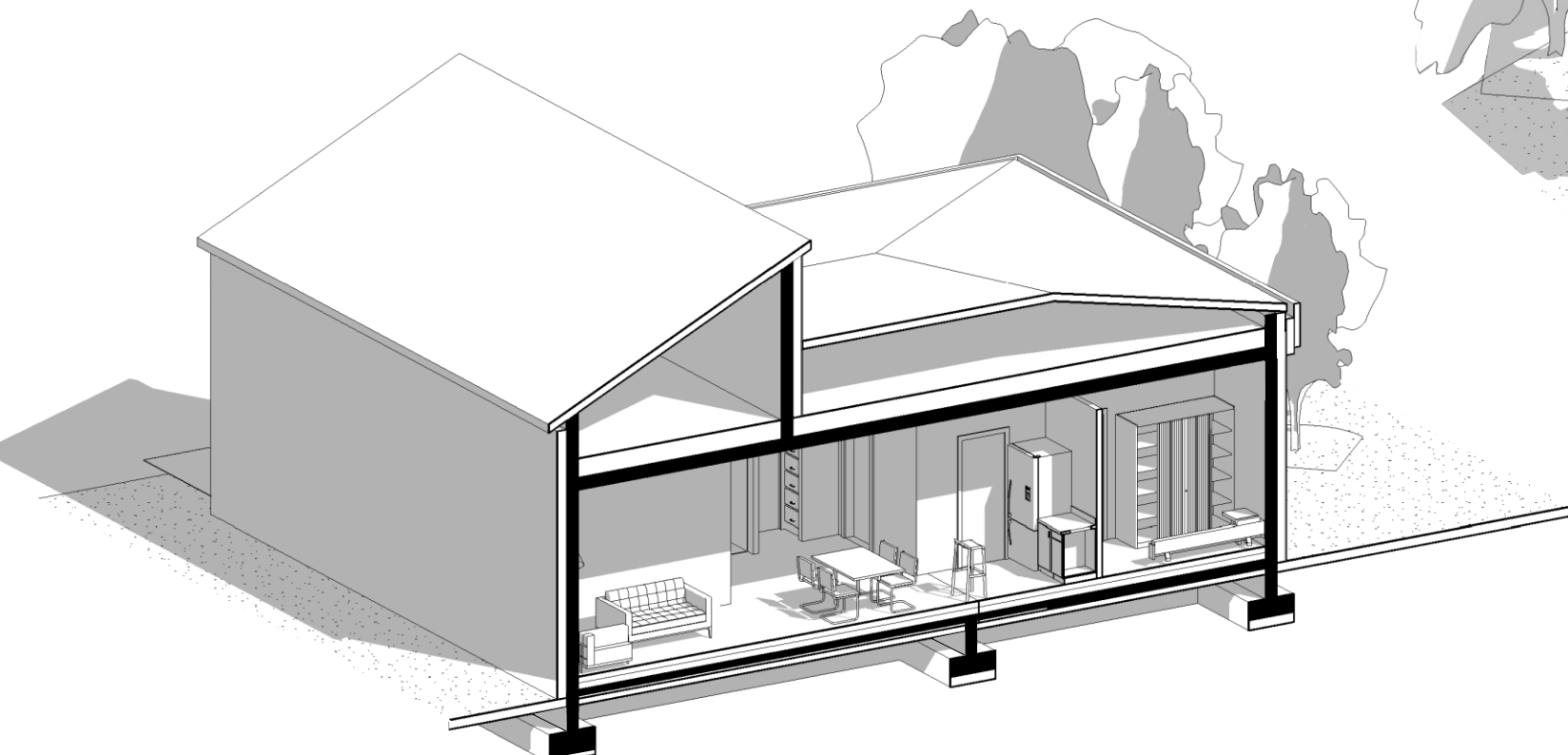
I severni izgled 1 : 200



I presek u pespektivi 1

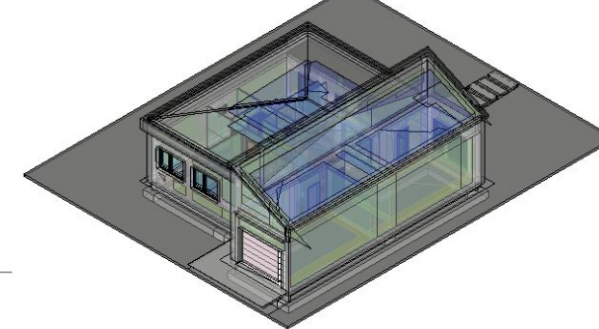


I presek u pespektivi 2



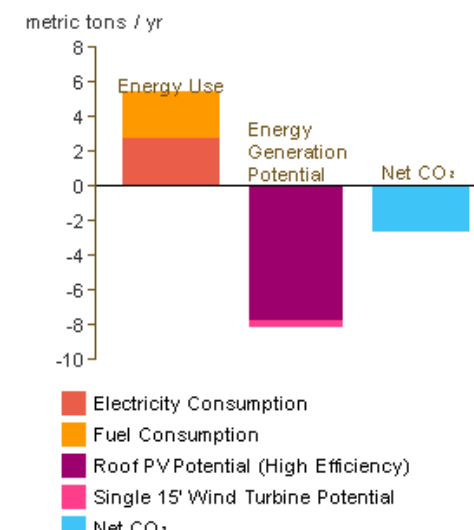
I semestralna tema istraživanja // Massing and Orientation // ENERGETSKA ANALIZA

I energetski model



Location:	Ulica Kolubarska, 11050 Belgrade, Serbia
Weather Station:	171981
Outdoor Temperature:	Max: 35°C/Min: -15°C
Floor Area:	159 m ²
Exterior Wall Area:	138 m ²
Average Lighting Power:	4.84 W / m ²
People:	0 people
Exterior Window Ratio:	0.10
Electrical Cost:	\$0.14 / kWh
Fuel Cost:	\$0.14 / Therm

I godišnja emisija ugljenika

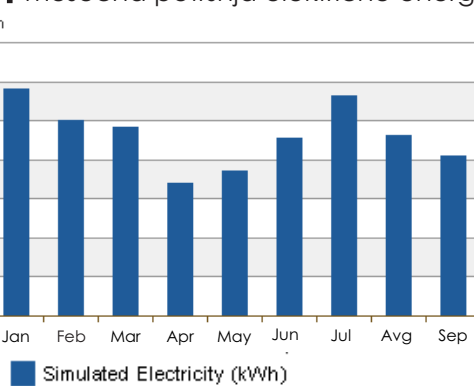


Electricity EUI:	83 kWh / sm / yr
Fuel EUI:	803 MJ / sm / yr
Total EUI:	1,102 MJ / sm / yr

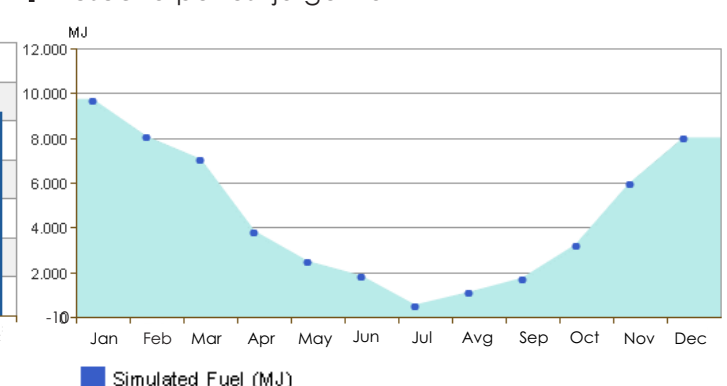
Life Cycle Electricity Use:	164,878 kWh
Life Cycle Fuel Use:	1,590,832 MJ
Life Cycle Energy Cost:	\$11,277

Roof Mounted PV System (Low efficiency):	5,065 kWh / yr
Roof Mounted PV System (Medium efficiency):	10,129 kWh / yr
Roof Mounted PV System (High efficiency):	15,194 kWh / yr
Single 15' Wind Turbine Potential:	670 kWh / yr

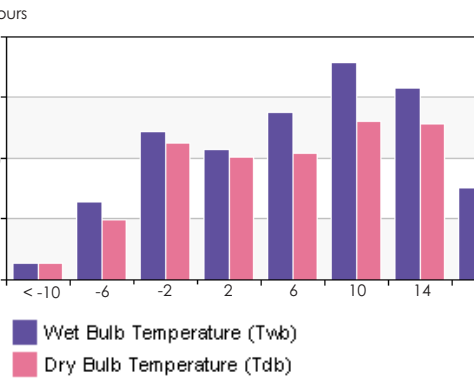
I mesečna potrošnja električne energije



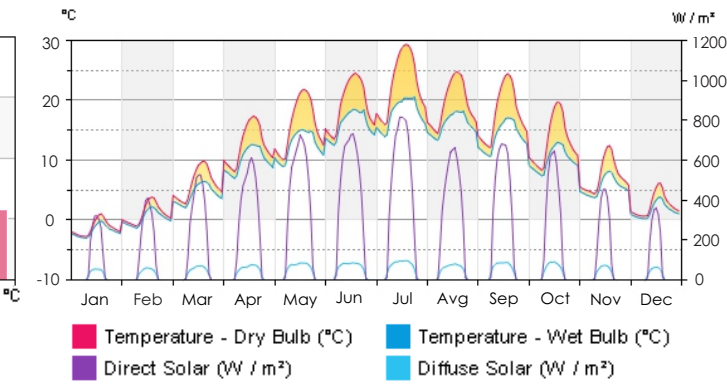
I mesečna potrošnja goriva



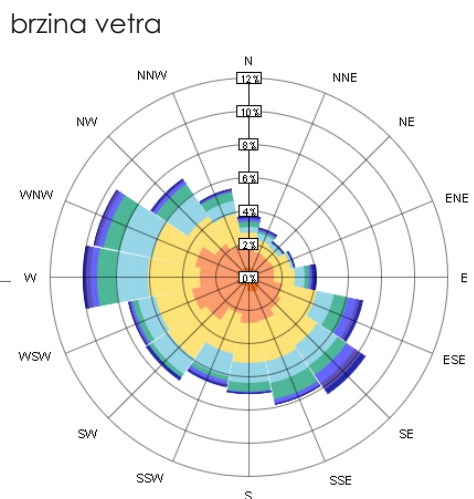
I prosečne godišnje temperature



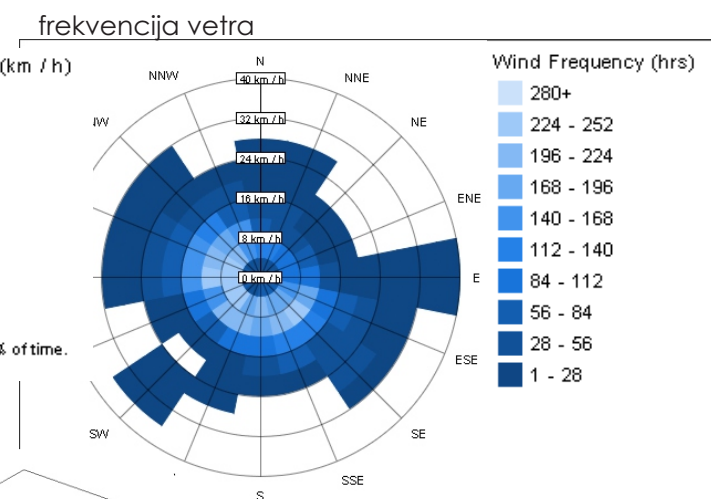
I prosečne dnevne temperature



I godišnja ruža vetra



brzina vetra



I prostorni prikaz - eksplodirana aksonometrija

