



WHY?

NZEB → CONSUMED ENERGY - PRODUCED ENERGY ≈ 0

ENERGY SAVING



WINTER

SUMMER

WINTER

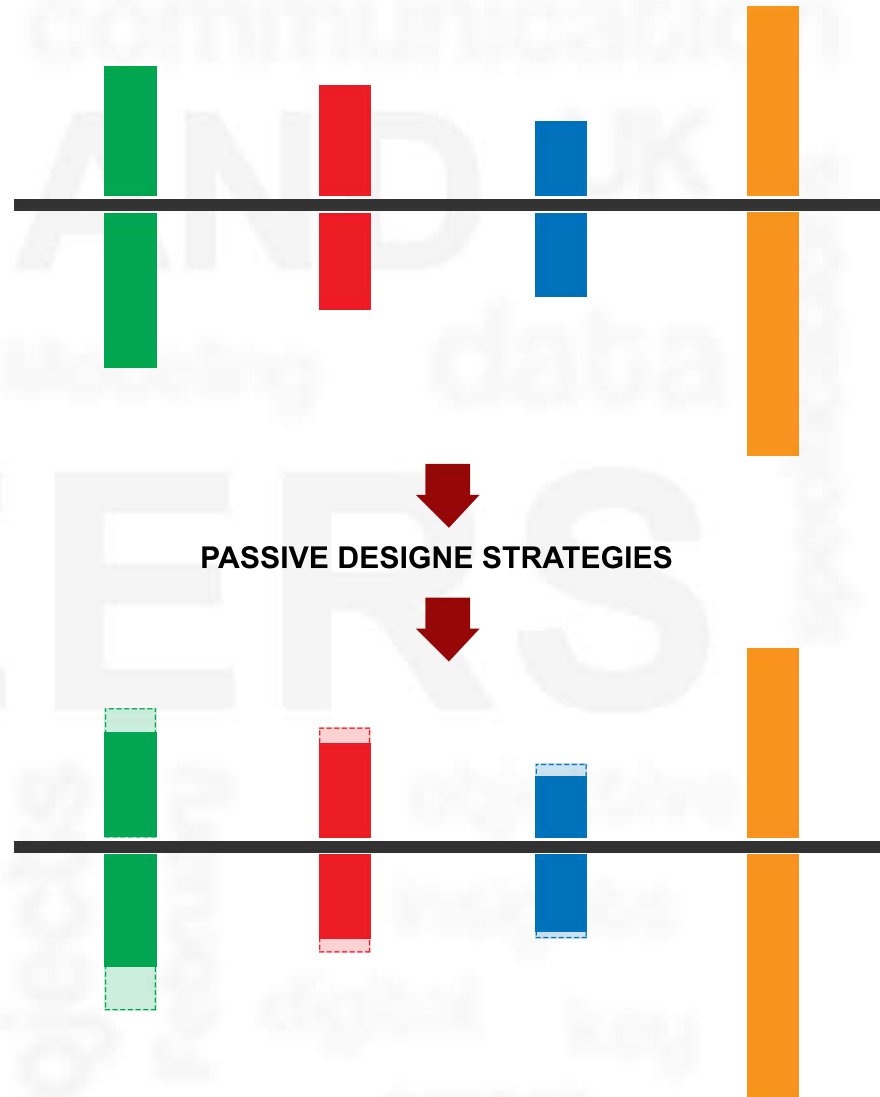
SUMMER

HVAC

LIGHT

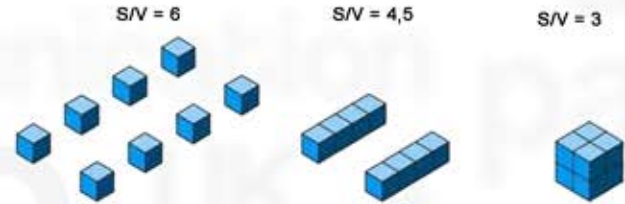
EQUIPMENT & OTHER

PRODUCED ENERGY



STRATEGIES

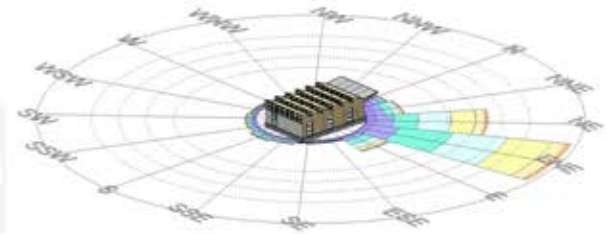
- CONTROL OF THE RATIO S/V
a more compact and simple shape disperses less heat



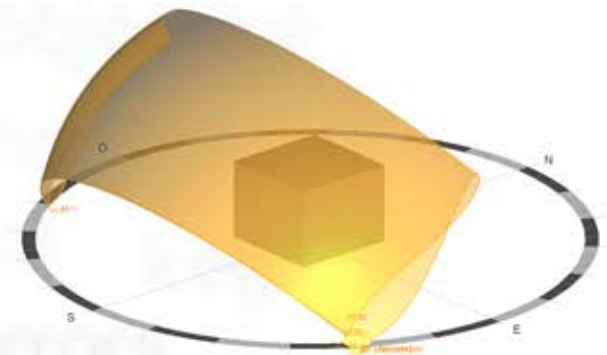
GENERAL CONDITION



- ORIENTATION OF THE BUILDING
IN RELATION TO THE WIND
use summer winds to cool



- ORIENTATION OF THE BUILDING
IN RELATION TO THE SUN
orient the best rooms where is the sun

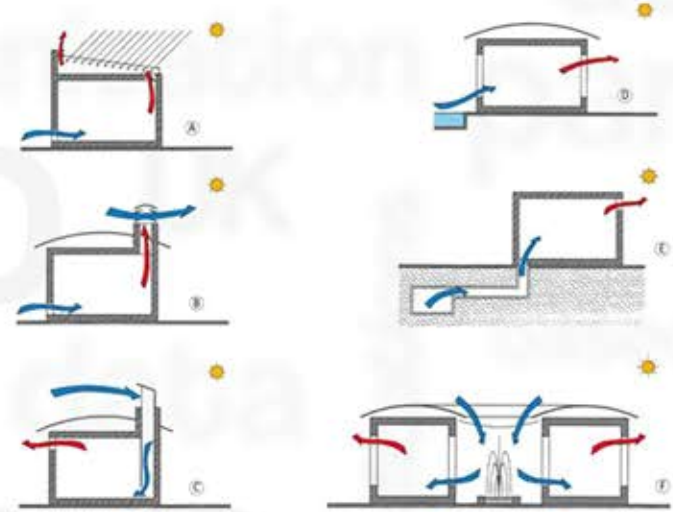


STRATEGIES

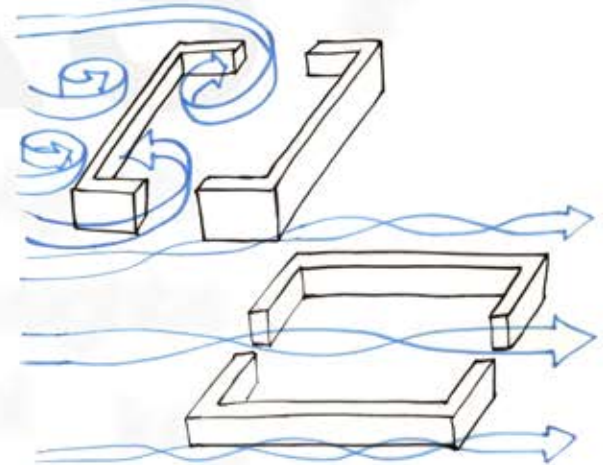
NATURAL VENTILATION



- **EXPLOITING THE PRESSURE DIFFERENCE**
exploit the movements of air at different temperatures to cool



- **OPENINGS AREA AND PLACEMENT**
place the openings in the direction of the wind have a direct passage of the air

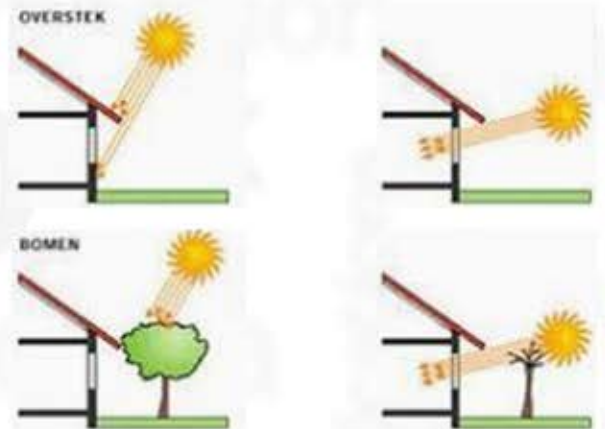


STRATEGIES

SOLAR RADIATION



- **SOLAR PROTECTION**
block summer solar radiation
allow the passage of winter solar radiation



- **ROOF SOLAR HEATING**
proteggere il tetto dalla radiazione solare con vernici riflettenti o tetti verdi

