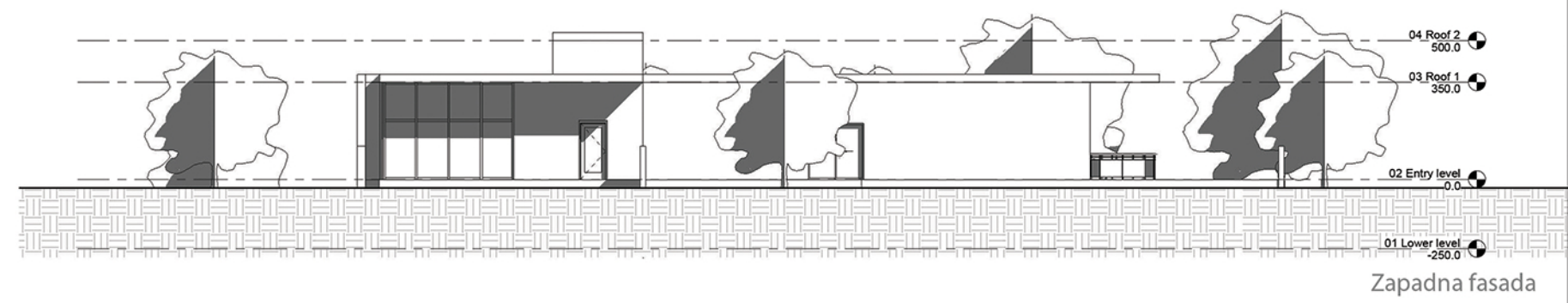


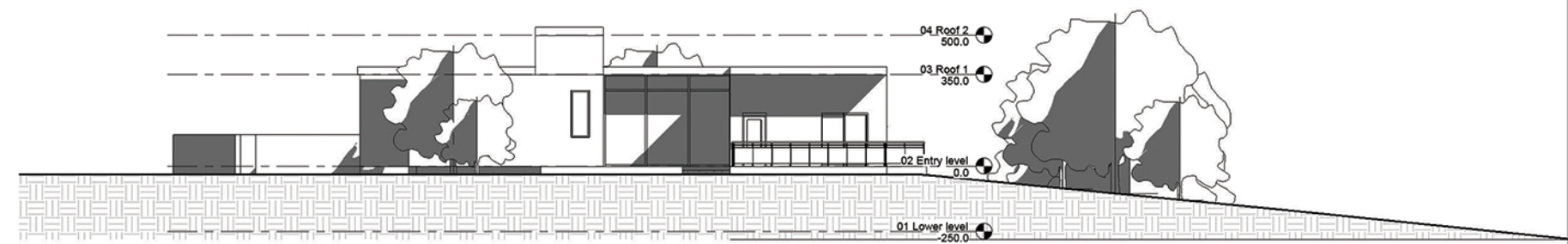
Pregled prostorija:

Broj	Naziv	Površina
1	Ulazni hol	22.1 m ²
2	Dnevna soba	32.7 m ²
3	Kuhinja	22.2 m ²
4	Trpezarija	18.6 m ²
5	Wc	6.0 m ²
6	Hodnik	26.3 m ²
7	Spavaća soba	22.8 m ²
8	Kupatilo 1	17.2 m ²
9	Vešernica	10.5 m ²
10	Dečija soba 1	14.4 m ²
11	Dečija soba 2	18.0 m ²
12	Kupatilo 2	13.5 m ²
13	Trem	17.6 m ²
14	Terasa 1	7.9 m ²
15	Terasa 2	15.0 m ²
16	Multifunkcionalni pro	130.5 m ²
	Ukupno	395.2 m²

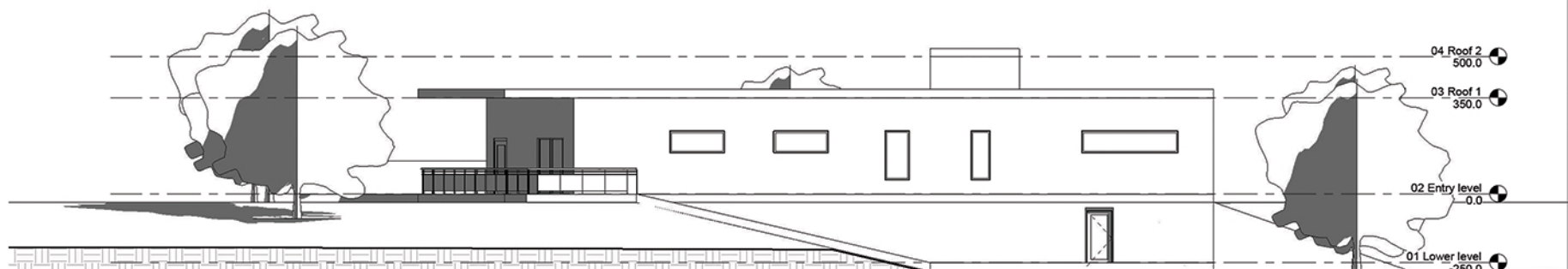
Osnova prizemlja
R 1:200



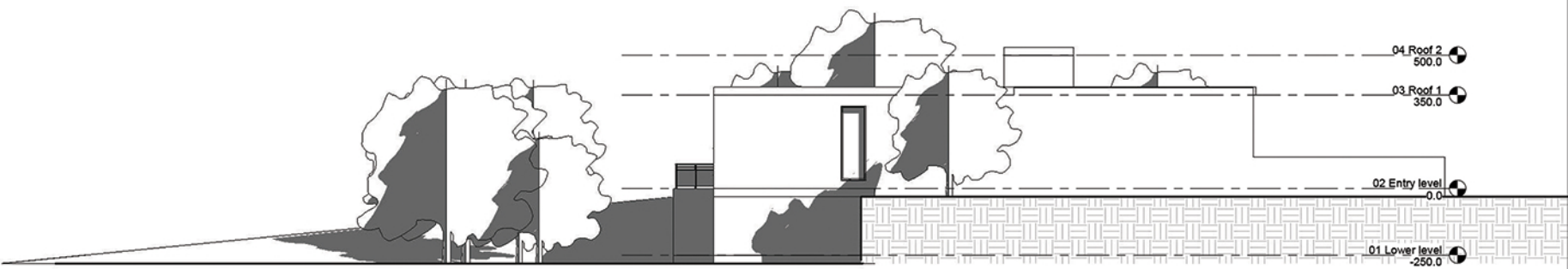
Zapadna fasada



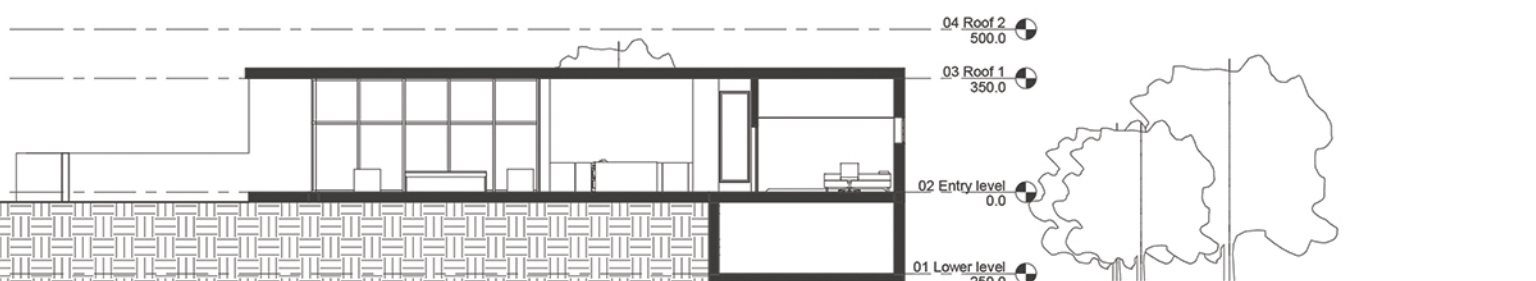
Južna fasada



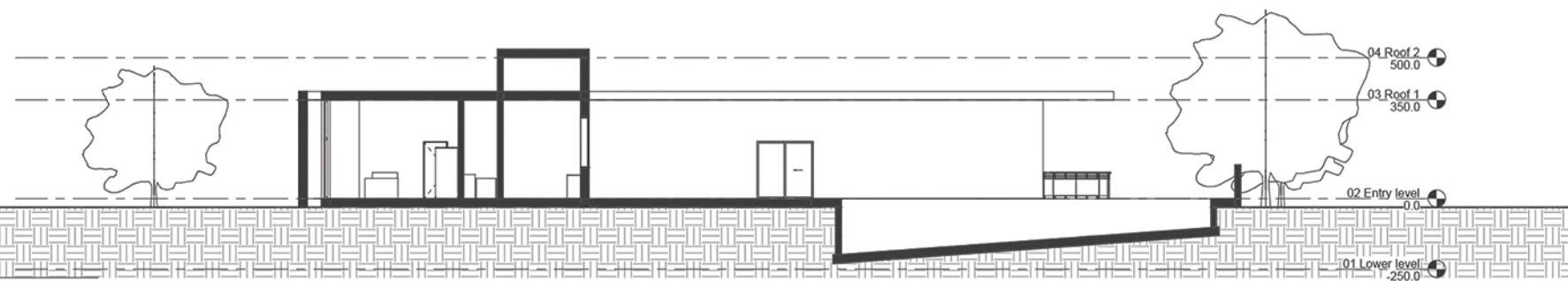
Istočna fasada



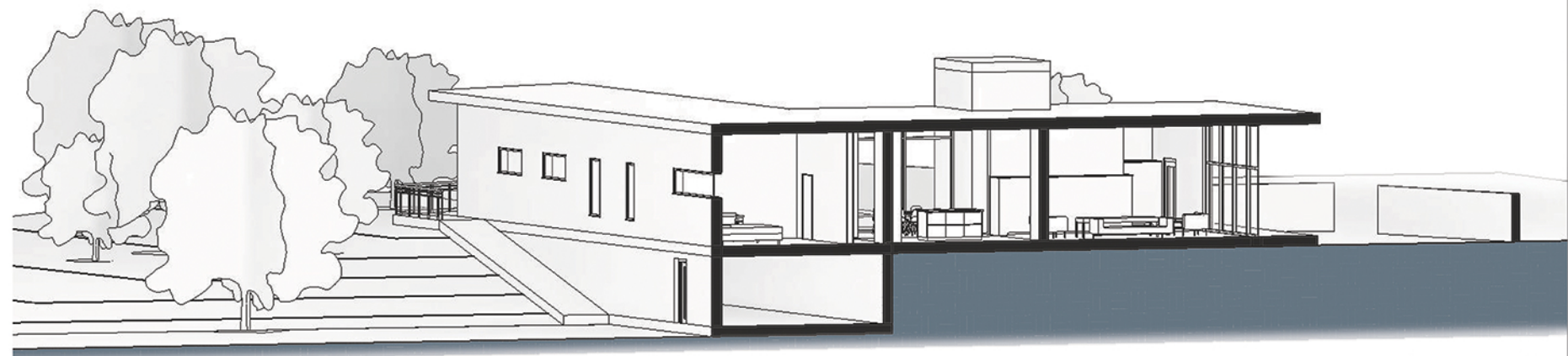
Severna fasada



Presek 1-1

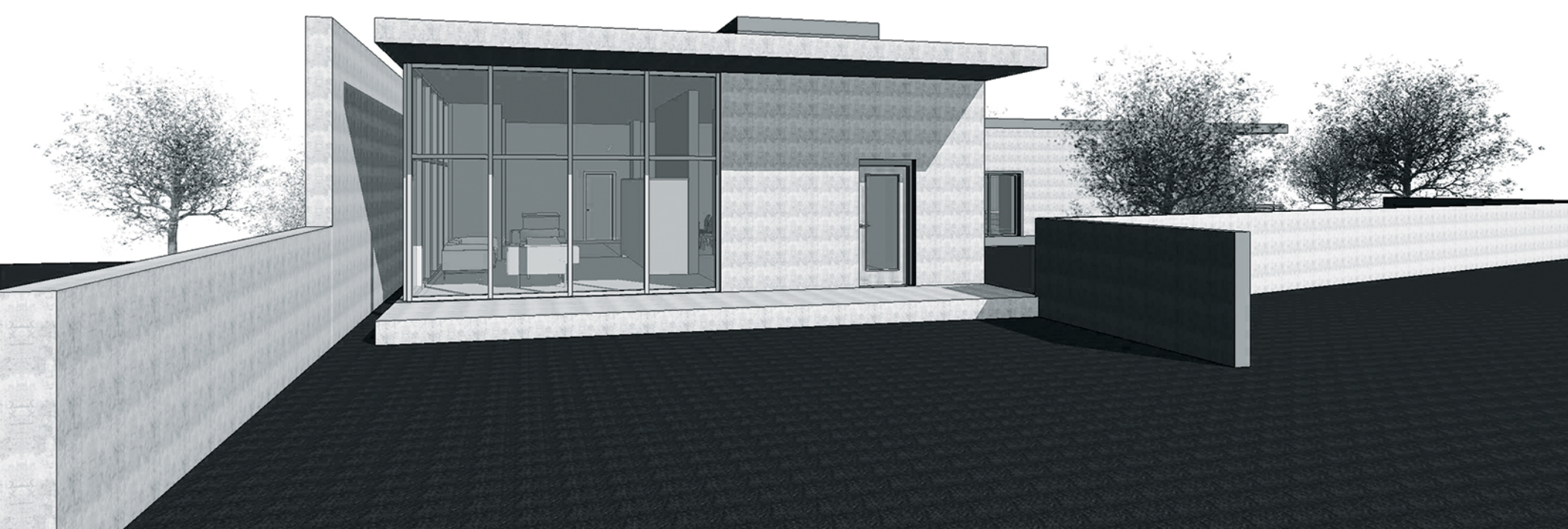


Presek 2-2



Perspektivni prikaz

Perspektivni prikaz



Enterijerski prikazi

