



Technical drawing exercise

Design and draw a rectangular frame.

Design and draw a rectangular frame with a horizontal bar. The drawing should show the front, top, and side views. The frame should be 100 units wide and 50 units high. The bar should be 10 units wide and 5 units high. The bar should be centered horizontally and vertically within the frame.

Use the following dimensions: Frame width: 100, Frame height: 50, Bar width: 10, Bar height: 5.

Design and draw a rectangular frame with a horizontal bar. The drawing should show the front, top, and side views. The frame should be 100 units wide and 50 units high. The bar should be 10 units wide and 5 units high. The bar should be centered horizontally and vertically within the frame.

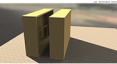
Use the following dimensions: Frame width: 100, Frame height: 50, Bar width: 10, Bar height: 5.

Design and draw a rectangular frame with a horizontal bar. The drawing should show the front, top, and side views. The frame should be 100 units wide and 50 units high. The bar should be 10 units wide and 5 units high. The bar should be centered horizontally and vertically within the frame.

Use the following dimensions: Frame width: 100, Frame height: 50, Bar width: 10, Bar height: 5.

Design and draw a rectangular frame with a horizontal bar. The drawing should show the front, top, and side views. The frame should be 100 units wide and 50 units high. The bar should be 10 units wide and 5 units high. The bar should be centered horizontally and vertically within the frame.

Use the following dimensions: Frame width: 100, Frame height: 50, Bar width: 10, Bar height: 5.



Technical drawing exercise