



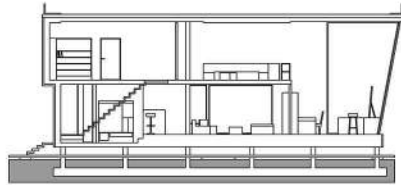
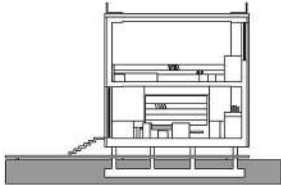
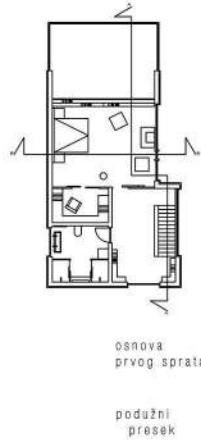
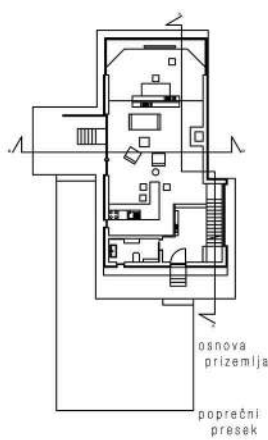
Jedinica za dvoje / Unit for two

Autor: Sonja Jokić 139/13

Mentor: doc.dr Mirjana Devetaković

Author: Sonja Jokić 139/13

Mentor: doc.dr Mirjana Devetaković



Ova stambena jedinica projektovana je za dve mlade devojke, sestre. Osmišljena je kao prostor za povremeni/radni boravak, ujedno prema investitorovim potrebama. Pregradni zidovi upotrebljeni su jedino kako bi odvojili prostor za ličnu higijenu od ostalih. Otvoren, nivelisan enterijer omogućava konstantu povezanost korisnika ove jedinice.

Objekat se nalazi na periferiji grada Beograda. Kako se nalazi u šumi, kao jedan od elementata enterijera, ujedno i noseći, predstavlja stablo.

Upotrebljeni materijali za izgradnju su beton i staklo. Staklene površine su uglavnom većih dimenzija.

This residential unit is designed for two young girls, sisters. It is designed as a space for casual / work room, at the same time according to the client's needs. Walls were used only to separate the space for personal hygiene than others. Open, leveled interior provides constant connectivity profile of the unit.

The building is located on the outskirts of Belgrade. Since it is located in the forest, one of the elements of the interior, also carrying presents tree.

The materials used for the construction are concrete and glass. Glass surfaces are generally larger in size.

