

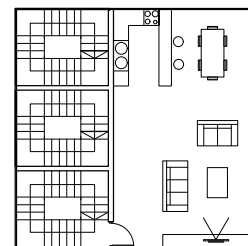
razmera 1:30

Dvoetažne jedinice

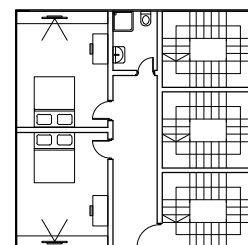
Projekat svetionika je zasnovan na postojanju tri prostorno odvojene, identične, dvoetažne stambene jedinice. Karakterističnost jedinica je u izraženoj visinskoj razlici samih etaža. Donje etaže jedinica predstavljaju noćne zone boravka orjentisane ka unutrašnjosti ostrva, gde je izvor mira i tišine tokom noći. Donje etaže sadrže po dve spavaće sobe i jedno kupatilo. Gornje etaže jedinica se nalaze na višim spratovima i predstavljaju dnevne zone boravka. Svaka od njih predstavlja jedan jedinstven prostor u kojem se nalazi i kuhinja, trpezarija, kao i svi elementi jednog dnevnog boravka. Ove dnevne etaže orjentisane su ka otvorenom okeanu na koji se pruža predivan pogled sa njih.

Two-storey units

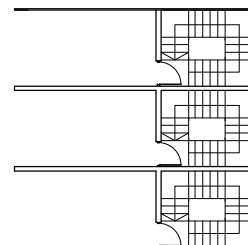
Project Lighthouse is based on the existence of three spatially separate, identical two-storey dwelling units. Specificity was in a height difference between floors of one unit. Lower floor of unit is a night zone stay oriented toward the interior of the island, which is the source of peace and tranquility during a night. Lower floors contain two bedrooms and one bathroom. Upper floor of unit is located on the upper floors and they are living zones during the day. All of them presents a unique space in which there is a kitchen, dining room, and all the elements of daily living spaces. This daily levels are oriented to the open ocean in which there is a beautiful view from them.



šesti sprat



prvi sprat



prizemlje; razmera 1:30

Svetionik Lighthouse 2014, Maldivi