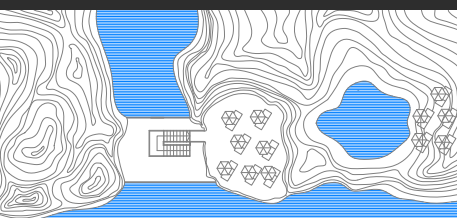
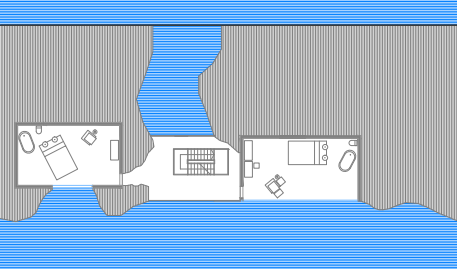


SVETIONIK

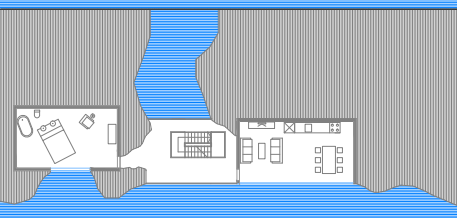
Nemanja Antonijević 086.2013
Principi CAAD-a



Situacija



Presek na koti 18.00



Presek na koti 12.00

Svetionik je građevina koja se podiže na obalama, ostrvima, stenama da bude orijentir morskim plovilima.

Projekat mog svetionika je malo drugačiji. Moj svetionik je deo prirodne pojave. Sam presek u steni ima funkciju svetionika. Ideja mog projekta je da se čovek prilagodi prirodi i sa minimalnom intervencijom i sa minimalnim sredstvima napravi nešto što ima istu svrhu nekog svetionika u koji je uloženo mnogo više sredstava da bi bio realizovan.

The lighthouse is a building which is lifted up on the coasts, islands, rocks to be a landmark marine vessels.

The project of my lighthouse is a little different. My lighthouse is part of the natural phenomenon. The scar in the rock acts as a lighthouse. The idea of my project is to adapt human to the nature and then, with minimal intervention and with minimal resources, make something that has the same purpose of a lighthouse in which some other invested many more resources to be implemented.