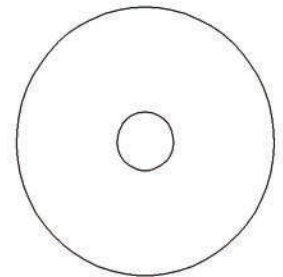
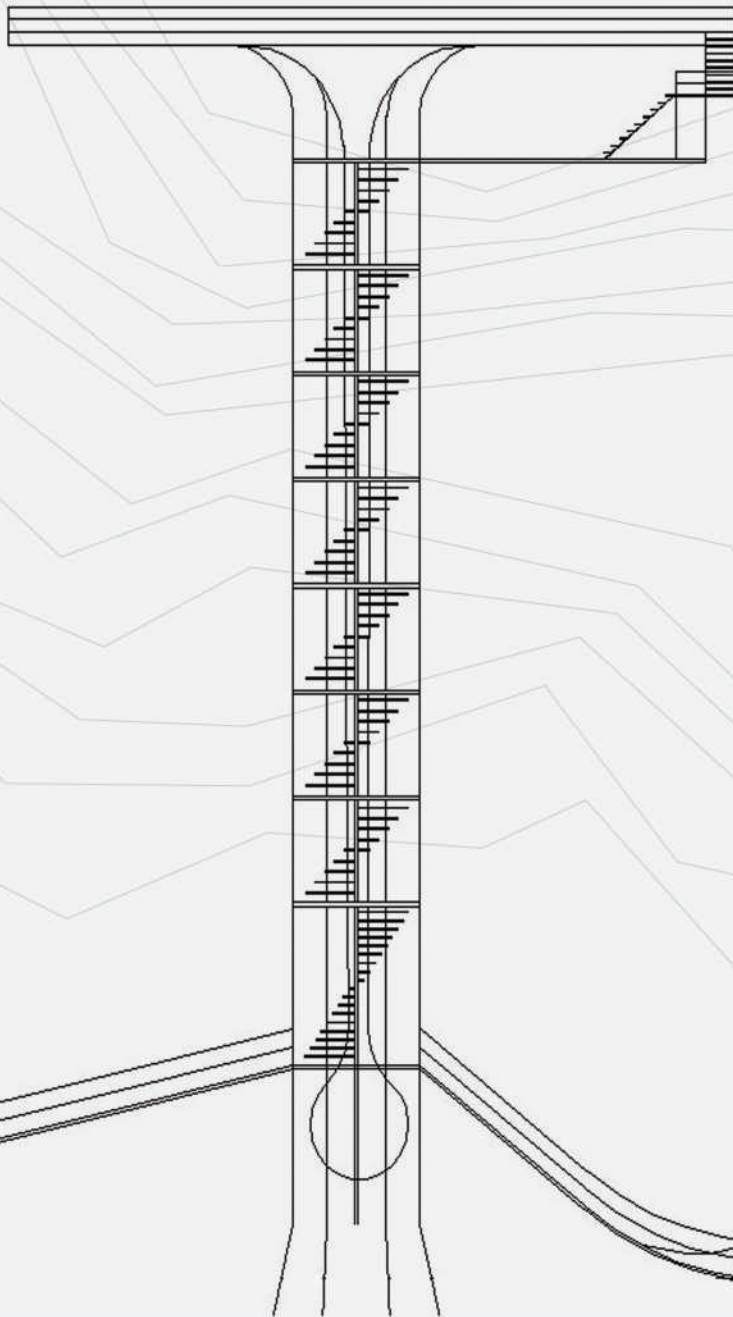


Lighthouse - Keeper of the Coast

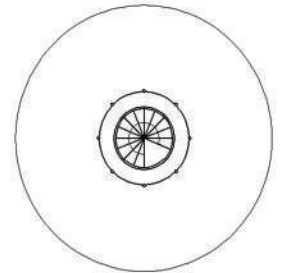
FRANCE

final review

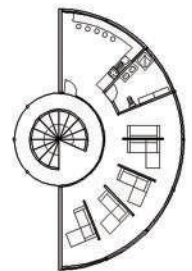
Ana Banović 58/2013
Principi CAAD-a
Prolečni smestar 2013/14
Arhitektonski fakultet
Univerzitet u Beogradu



OSNOVA 1



OSNOVA 2



OSNOVA 3

O SVETIONIKU

Svetionik se nalazi na otvorenom moru, nedaleko od kopna i pripada francuskoj obali. Svetionik ima dva prilaza: sa kopna rampom, i sa mora čamcem. U središtu svetionika nalazi se filter za vodu.

ABOUT LIGHTHOUSE

Lighthouse is located on the open sea, not far from the mainland. It belongs to the French coast.

The lighthouse has two entrances: from the land ramp and the sea by boat. At the center of the lighthouse is a water filter.

