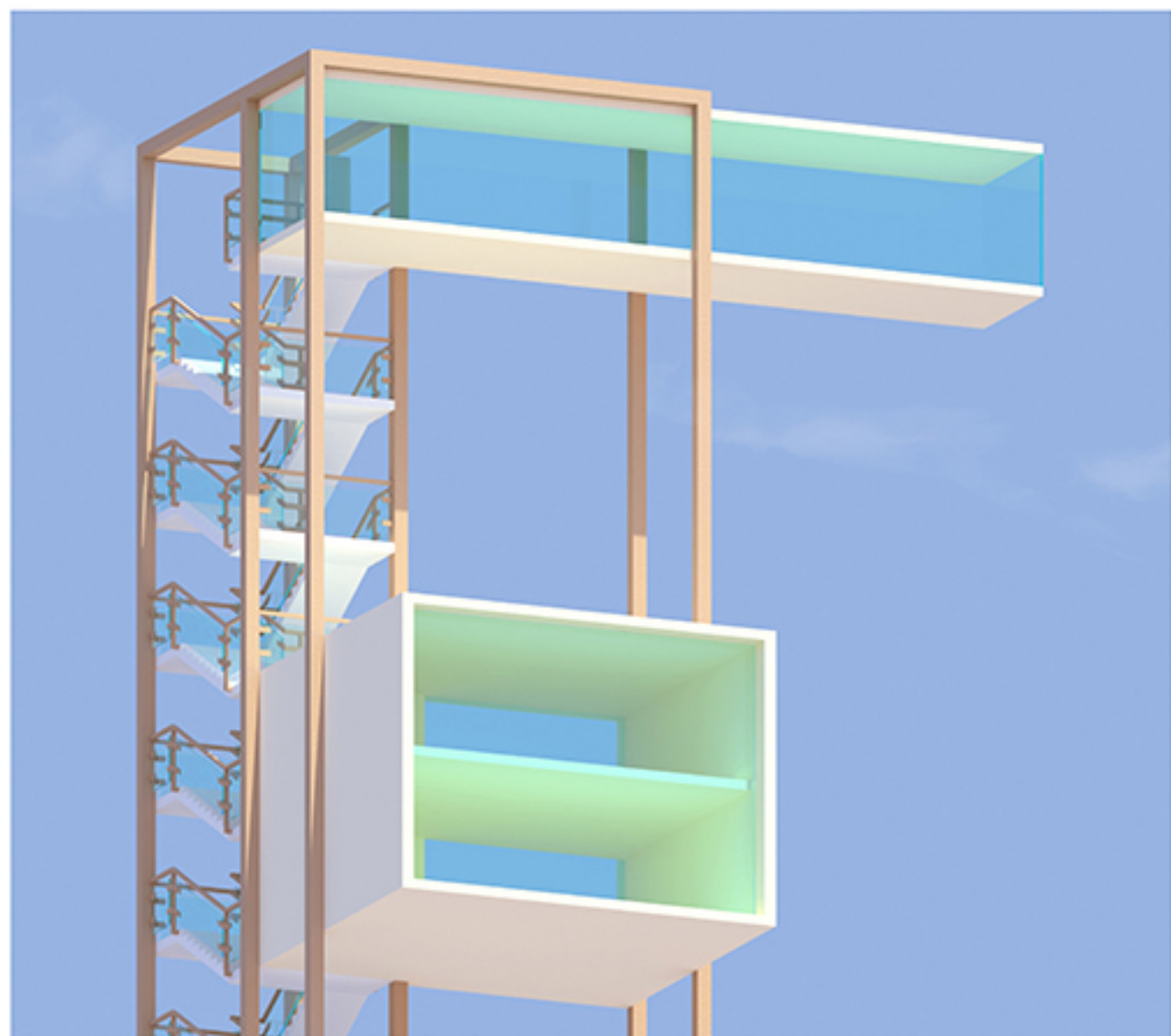
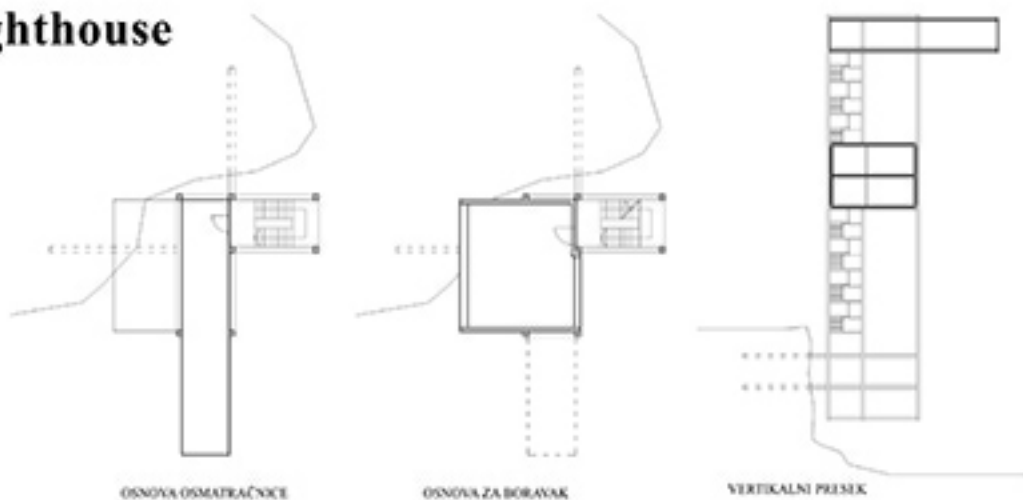


# Svetionik / Lighthouse

UNIVERZITET U BEOGRADU  
ARHITEKTONSKI FAKULTET

Prolećni semestar, 2013/14.



Svetionik se nalazi na malom ostrvu Filfla blizu Malte. Ovo ostrvo predstavlja liticu sa obrušenim kamenjem po njegovom obodu, pa je prilaz sa mora otežan. Svetionik je pričvršćen sa četiri grede za liticu ostrva na koje se oslanja šest vertikalnih stubova koji nose osmatračnicu i prostor za boravak. Osmatračnica se nalazi na samom vrhu sa pogledom na sve 4 strane sveta, a prostor za boravak ima 2 etaže sa otvorima ka istoku i zapadu.

This lighthouse is situated on Filfla island near Malta. The island has a cliff with rocks at its edge, so the access by the sea is difficult. The lighthouse is attached to the cliff with four beams and it has 6 columns (with the V-shaped basis) and watchtower as well as living space. The watchtower is at the very top of the lighthouse with the view in all directions, while the living space has two floors with openings to the east and west.