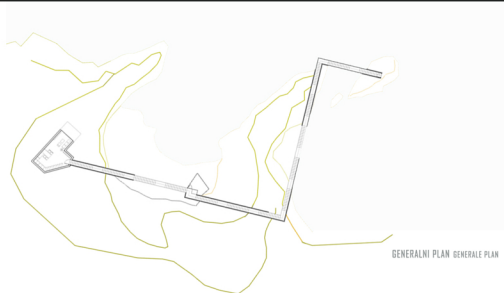


Idejni projekat-Svetionik



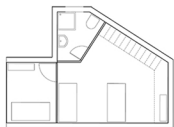
SITUACIONI PLAN SITE PLAN



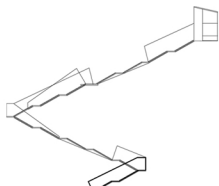
GENERALNI PLAN GENERALE PLAN



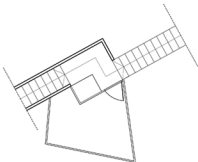
STAMBENA JEDINICA I SPRAT FIRST FLOOR PLAN



STAMBENA JEDINICA II SPRAT SECOND FLOOR PLAN



PRESEK SA IZOLEDOM SECTION



SEGMENT STEPENISTA SA TERASOM PART OF STAIRS WITH TERRACE



SEGMENT MODELA PART OF MODEL

Svetionik je zamišljen tako da svojim **terasom i stepenima, koja prate** i ne bude samo završna, ispravljena vertikala sa jednim pravcem panjujeja i isto tako osudbin cilj. Ideja je da najveći deo same forme cine stepenijski prostori koji bi, pružajući se kroz ogromno prostorno i oslanjanjući se mestimano na okolne stene, postali deo prirode i veza između mora i visinske kate od 65 m. Sve ovo bi svetioniku dodalo i niz drugih funkcija osim one svoje elementarne, a to je komunikacija između dva nepristupačna nivoa ,setuju na velikoj visini, sjedinjavanje arhitektonskog objekta sa okolinom...

The lighthouse is designed so that it's **terrace and stairs** do not just a separate, vertically built, one-directional staircase with a single purpose. The idea is that the largest part of the form itself is a stair-well area that would -extending through the vast expanse and leaning on the surrounding rocks- become a part of nature and a connection between the sea and the height of 65m. With this the lighthouse would gain a number of different functions other than it's natural one: communication between two inaccessible levels; walking at a high altitude; incorporating an architectural structure with it's surrounding...

