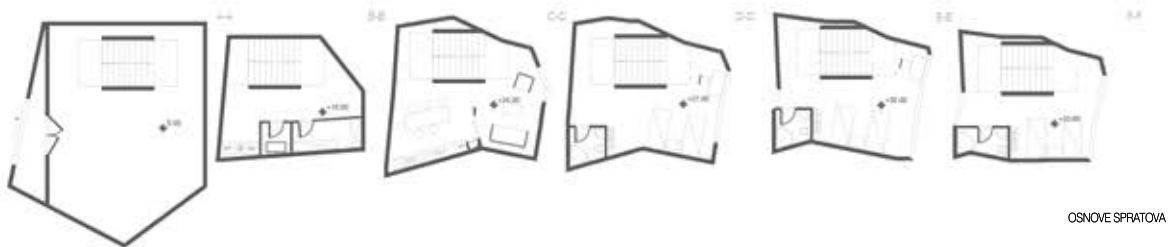
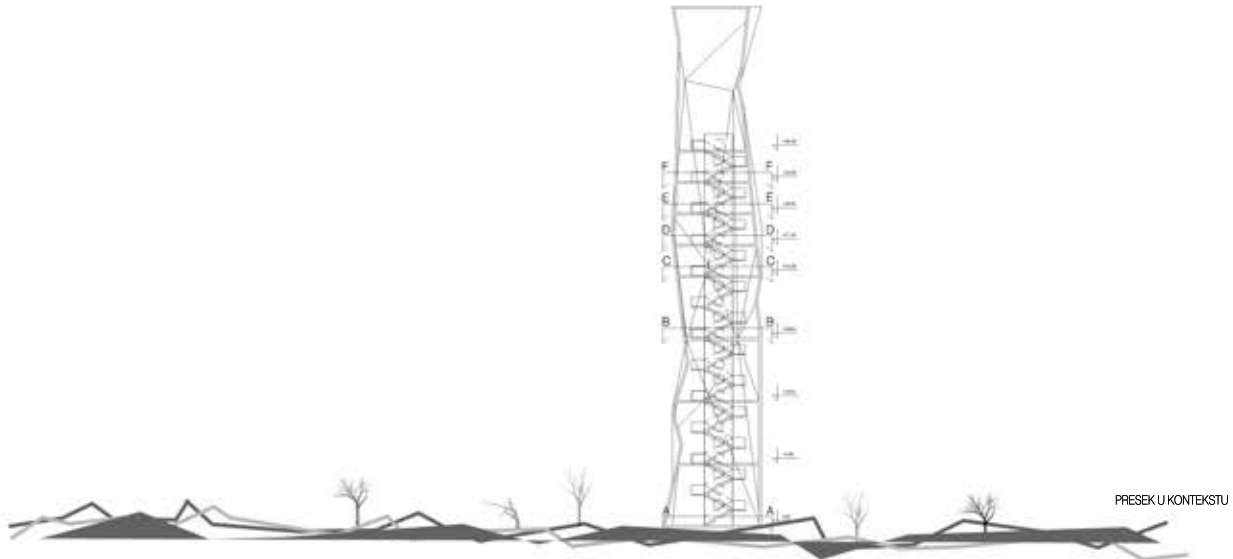


LIGHTHOUSE

Belgrade, Serbia

Tip : Svetionik
 Dimenzije: 9.5 m PREČNIK x 50 m VISINA (MAX)
 Lokacija: Beograd, Srbija
 Datum predstavljanja: April 2014.
 Dizajn: student Dušan Zonji 048/2013
 Klijent: Arhitektonski fakultet, Univerzitet u Beogradu



Lighthouse project was presented as a colloquial work of subject Elements of projecting. The idea behind the project is the construction of a multifunctional object that extends vertically. The initial idea of the purpose of the facility is the role of the lighthouse with housing units for the crew of the lighthouse and four visitors. In addition to the accommodation facilities in the building there is a room service and lounge. The lighthouse is equipped so that its users can spend long periods of time in it.

Svetionik je projekat koji je predstavljen kao kolokvijalni rad iz predmeta Elementi projektovanja. Ideja koja stoji iza projekta je izgradnja multifunkcionalnog objekata koji se proteza po vertikali. Inicijalna ideja namene objekta je uloga svetionika sa stambenim jedinicama za posadu svetionika i četiru posetioca. Pored smestajnih prostorija, u objektu se nalaze i servisne prostorije, kao i dnevni boravak. Svetionik je opremljen tako da njegovi korisnici mogu provesti duži vremenski period u njemu.