

PORTFOLIO

INTEGRATED MODEL OF
ARCHITECTURAL STRUKTURES

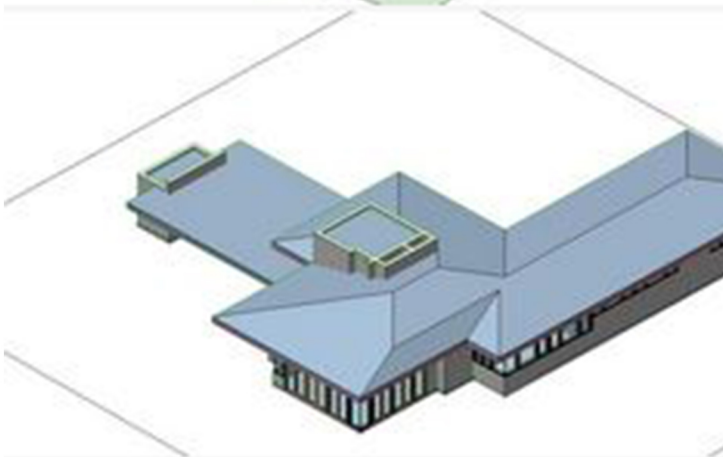
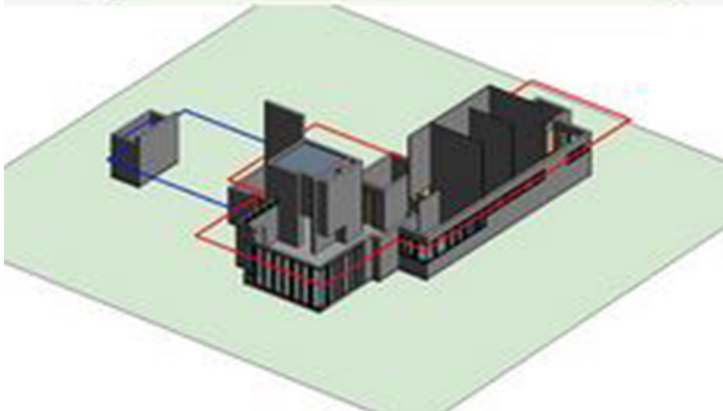
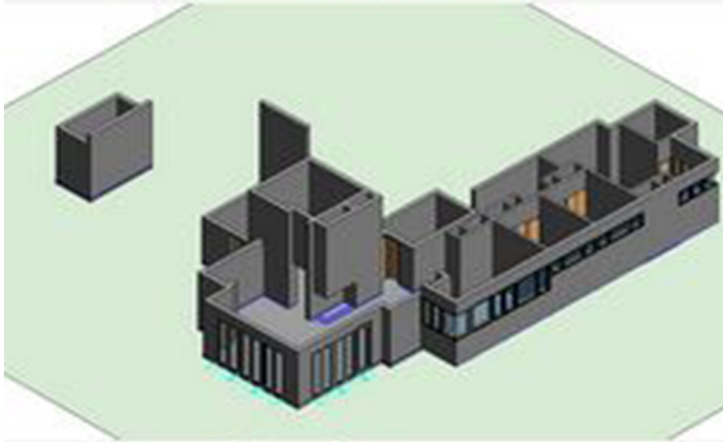
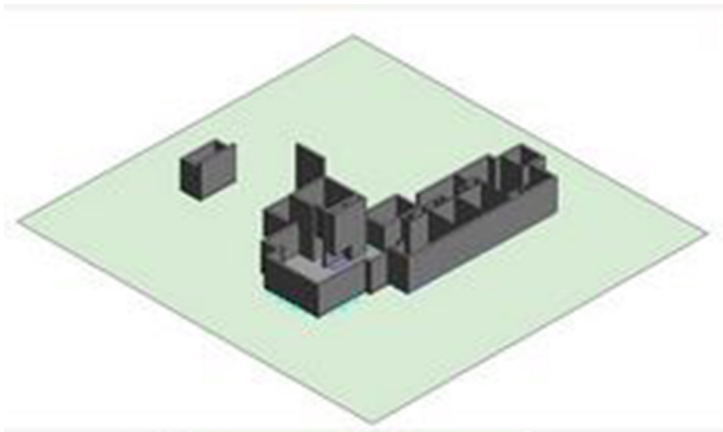
2013/2014



AUTODESK®
REVIT®

University of Belgrade, Faculty of Architecture
Undergraduated studies
Winter semestar 2013/2014.

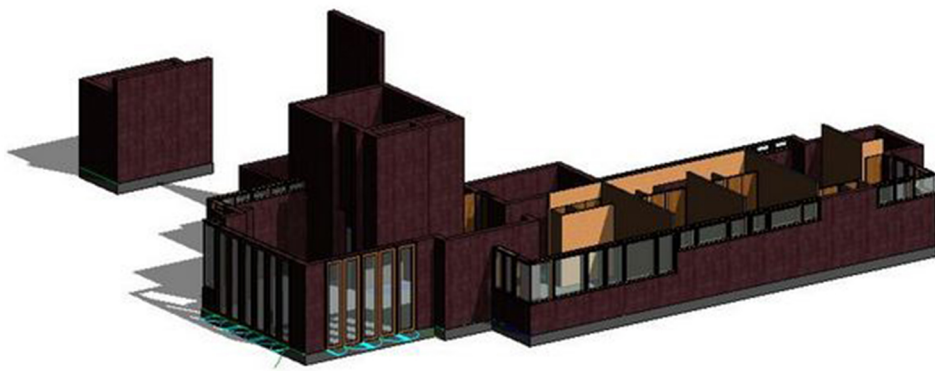
Modul 17 – kurs 17.1: Integrisano modelovanje
arhitektonskih objekata - Revit
mentor: doc. dr. Mirjana Devetaković Radojević
Student: Jovančević Bojan 54/2011



Lekcija 1.1// Iscrtavanje spoljasnjih i unutrašnjih zidova u prizemlju prema zadatoj osnovi i podesanim parametrima

Lekcija 1.2// Dodavanje spoljasnjih i unutrašnjih otvora-vrata i prozora prema maksimalnoj visini 2.13 m i podesavanje otvaranja

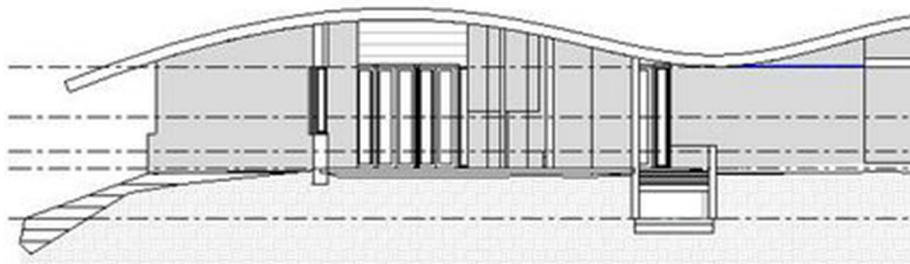
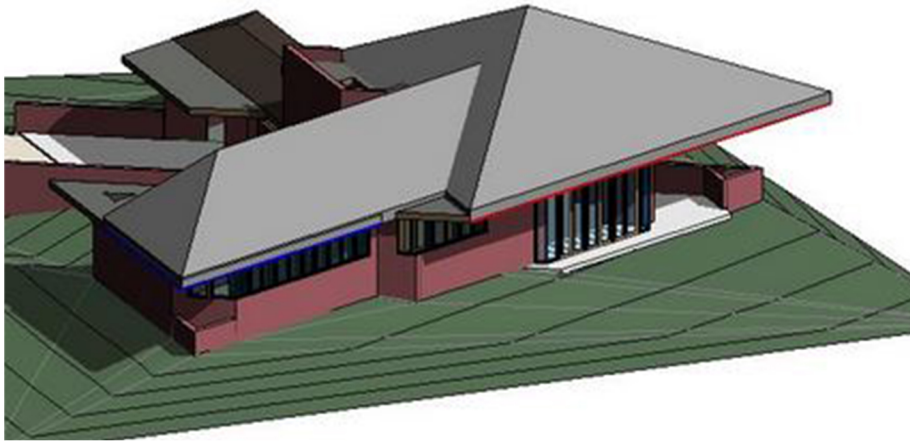
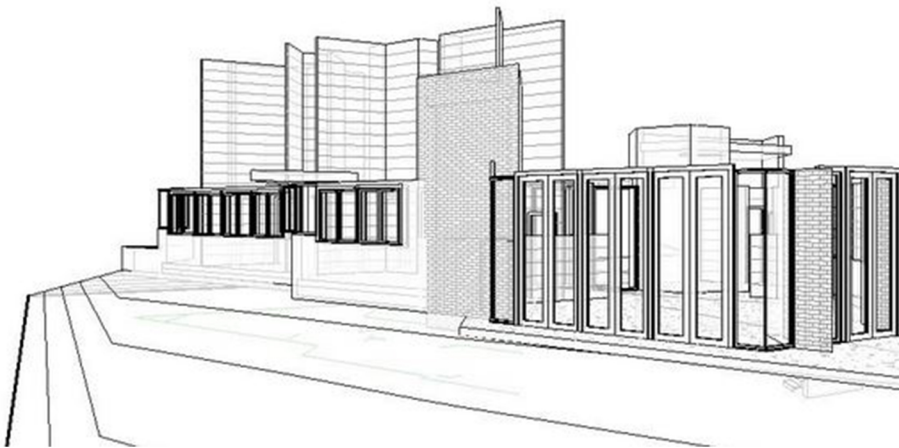
Lekcija 1.3// Formiranje ravnog i kosog krova nad zadatom osnovom



AUTODESK®
REVIT®

University of Belgrade, Faculty of Architecture
Undergraduated studies
Winter semestar 2013/2014.

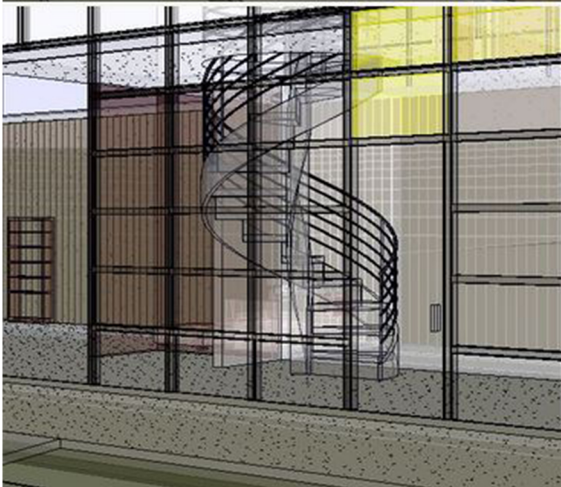
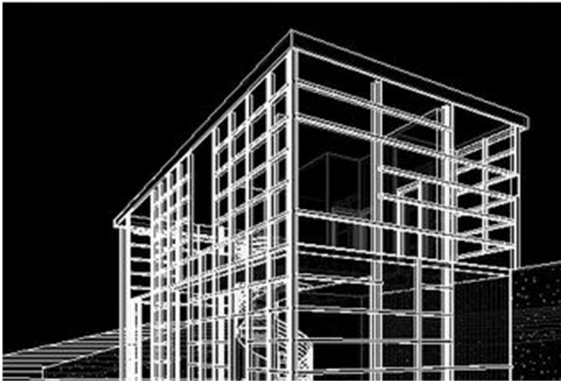
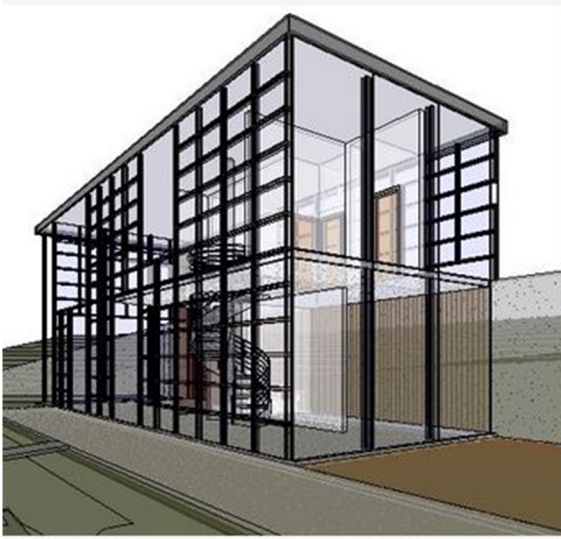
Modul 17 – kurs 17.1: Integrisano modelovanje
arhitektonskih objekata - Revit
mentor: doc. dr. Mirjana Devetaković Radojević
Student: Jovančević Bojan 54/2011



//1 zadatak// Promena materijala spoljašnjih zidova i pravljenje novog tipa un-
utrasnjih zidova

//2 zadatak// Pomocu opcije array, određen broj puta kopirati prozore i vrata

//3 zadatak// Formiranje krovnih ravni iznad date osnove i spojiti ih pomocu opcije
Join Roof

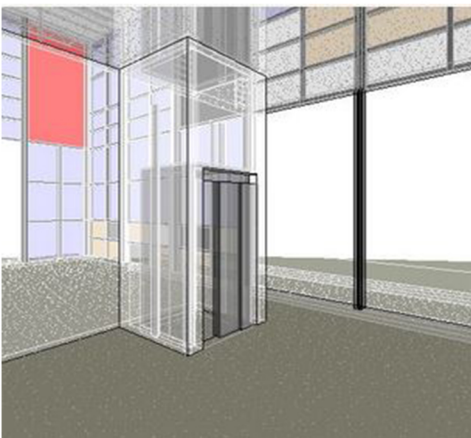
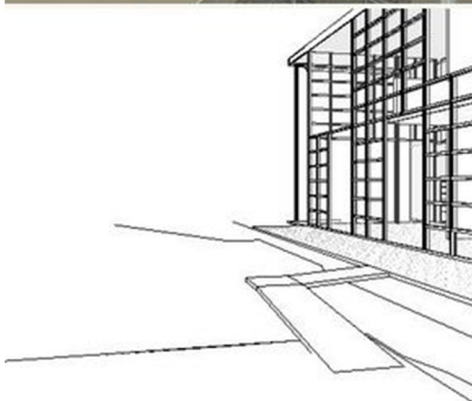
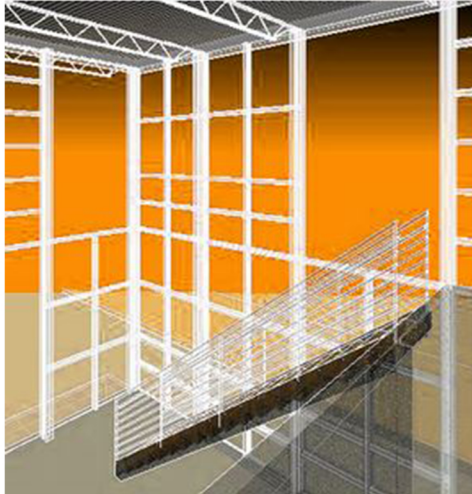
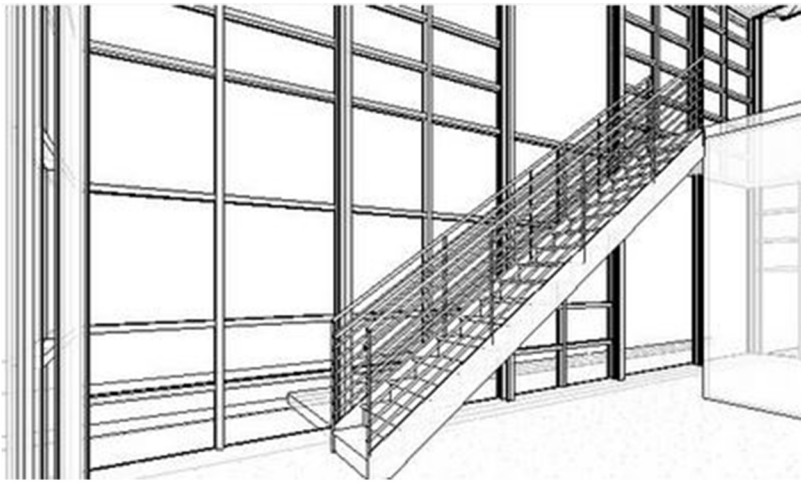


//1 zadatak// Postavljanje zid zavese

//2 zadatak// Kreiranje sopstvenih panela

//3 zadatak// Menjanje i dodavanje panela razlicitih materijala u zid zavese

//4 zadatak// Ubacivanje otvora u mrezu zid zavese

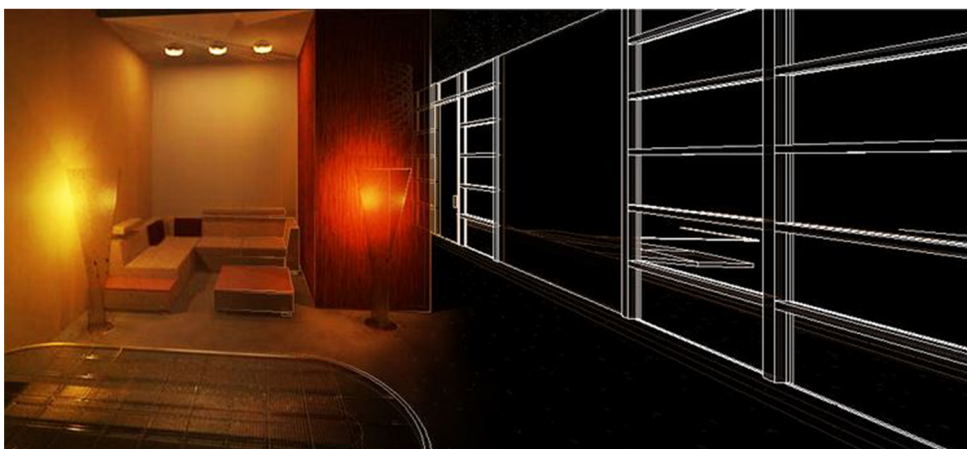
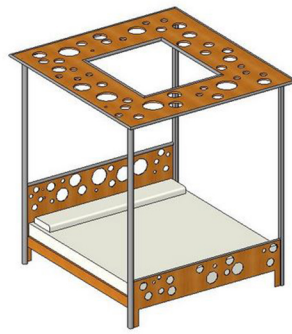


//1 zadatak// postavljanje stepeništa i rampi.

//2 zadatak// modifikovanje stepeništa i ograde.

//3 zadatak// kreiranje otvora u ploči i postavljanje ograde.

//4 zadatak// postavljanje lifta i otvora u ploči pomoću opcije shaft opening i zidova oko lifta pomoću opcije wall opening.

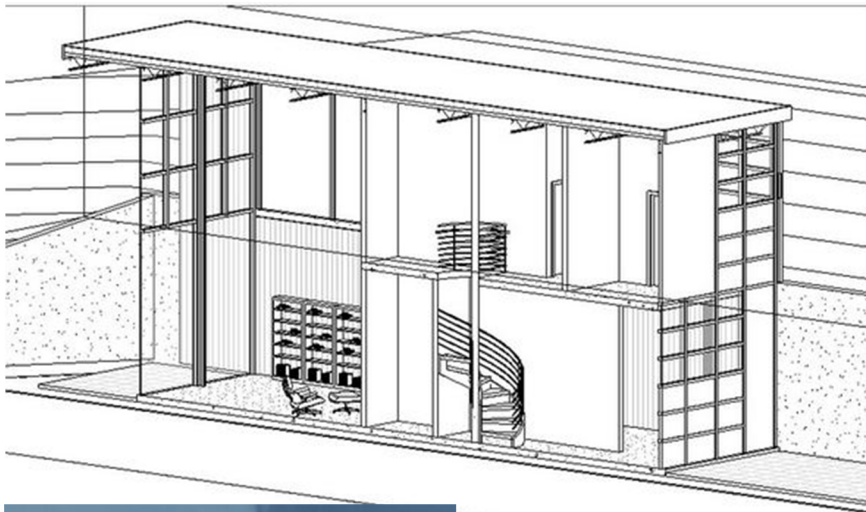
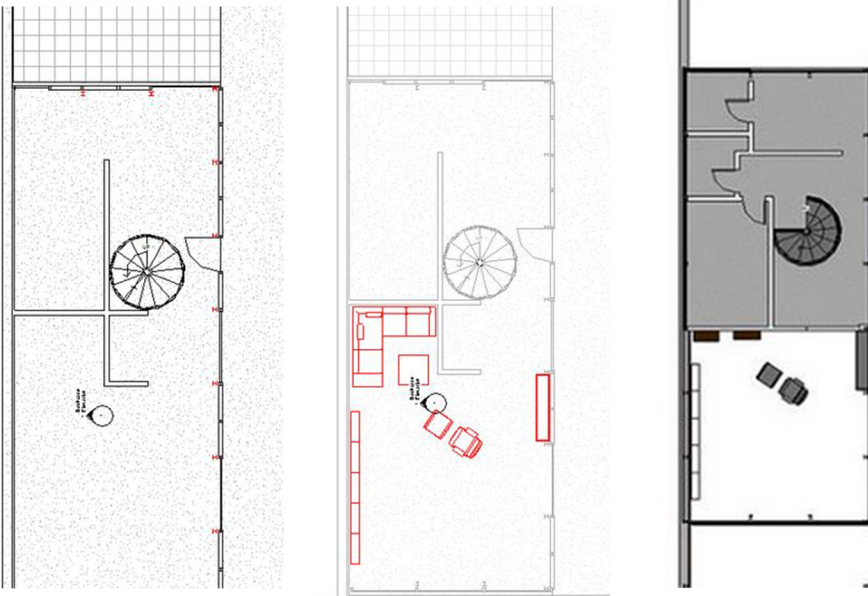


/1. zadatak/ modelovanje familija_in-place components

/2.zadatak/ promena parametara postojeće familije

/3. zadatak/ modelovanje nove familije

// www.arcad.com // www.revitcity.com // www.cadforum.cz // www.arcad.com



//1 zadatak// promena prikaza
osnove u zavisnosti od elementa
koji zelimo da istaknemo

//2 zadatak// postavka preseka kroz
objekat

//3 zadatak// kadriranje 3D prikaza

//4 zadatak// definisanje detalja po-
trebnih za render



AUTODESK®
REVIT®

University of Belgrade, Faculty of Architecture
Undergraduated studies
Winter semester 2013/2014.

Modul 17 – kurs 17.1: Integrirano modelovanje
arhitektonskih objekata - Revit
mentor: doc. dr. Mirjana Devetaković Radojević
Student: Jovančević Bojan 54/2011



/1 zadatak/ Dodeljivanje materijala elementima objekta (popločanje);

/ 2 zadatak / Pravljenje novih materijala;

/ 3 zadatak / Pravljenje renderovanog prikaza spoljašnjosti objekta i podešavanja osvetljenja (high quality render);

/4 zadatak/ Pravljenje renderovanog prikaza unutrašnjosti objekta i podešavanje osvetljenja (medium quality render).

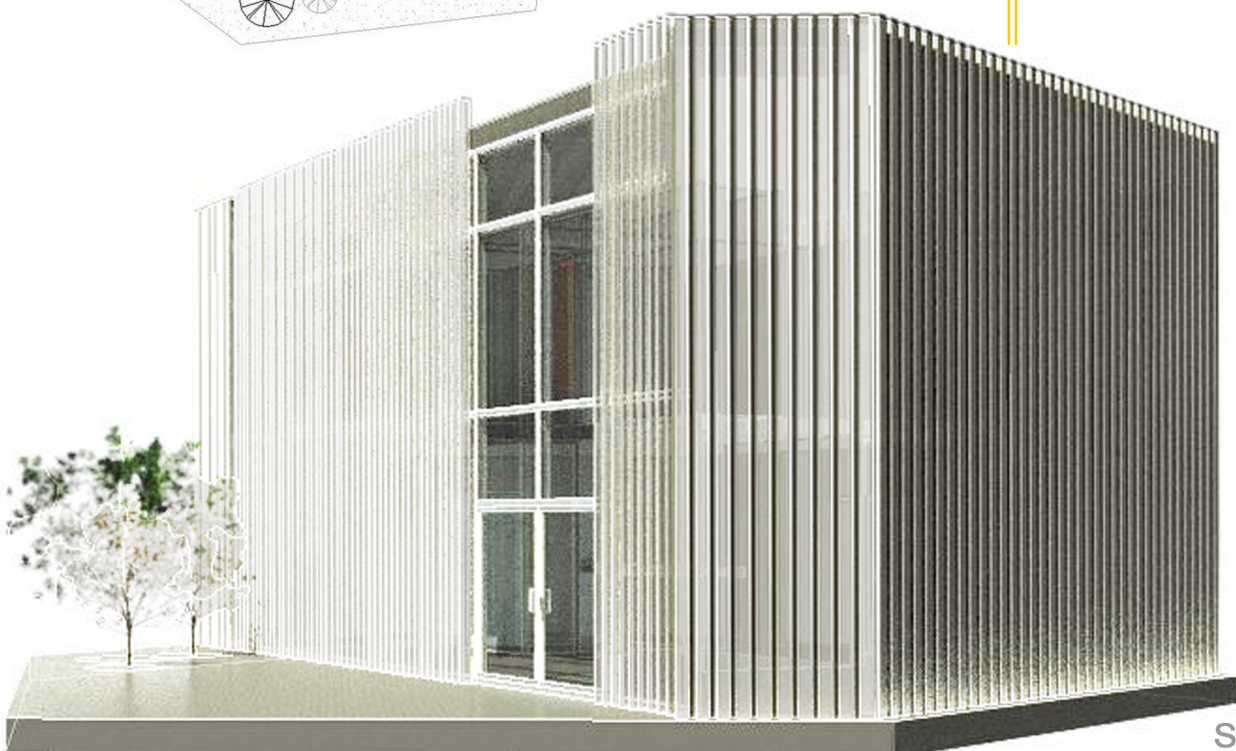
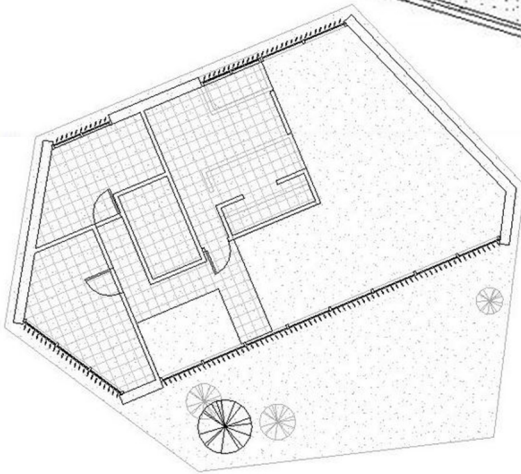
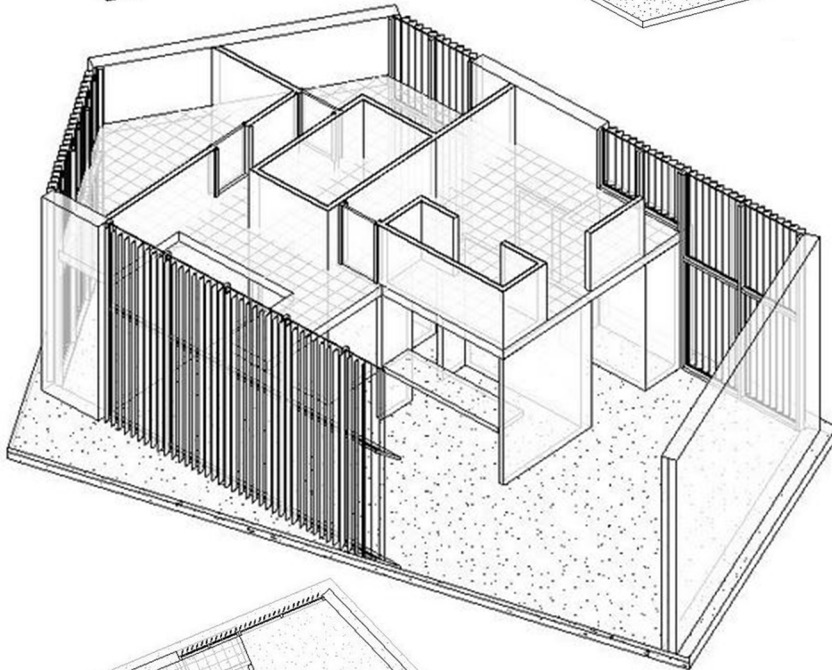
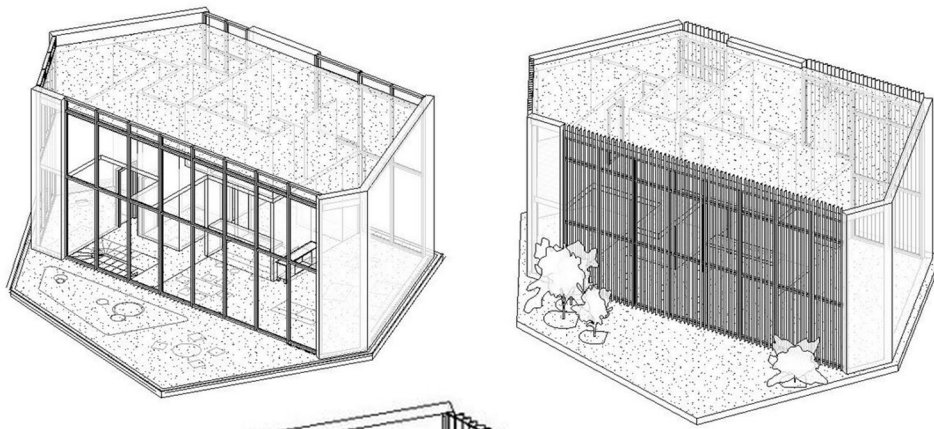
LESSON 7



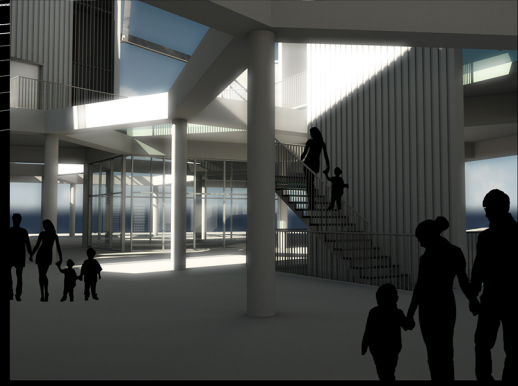
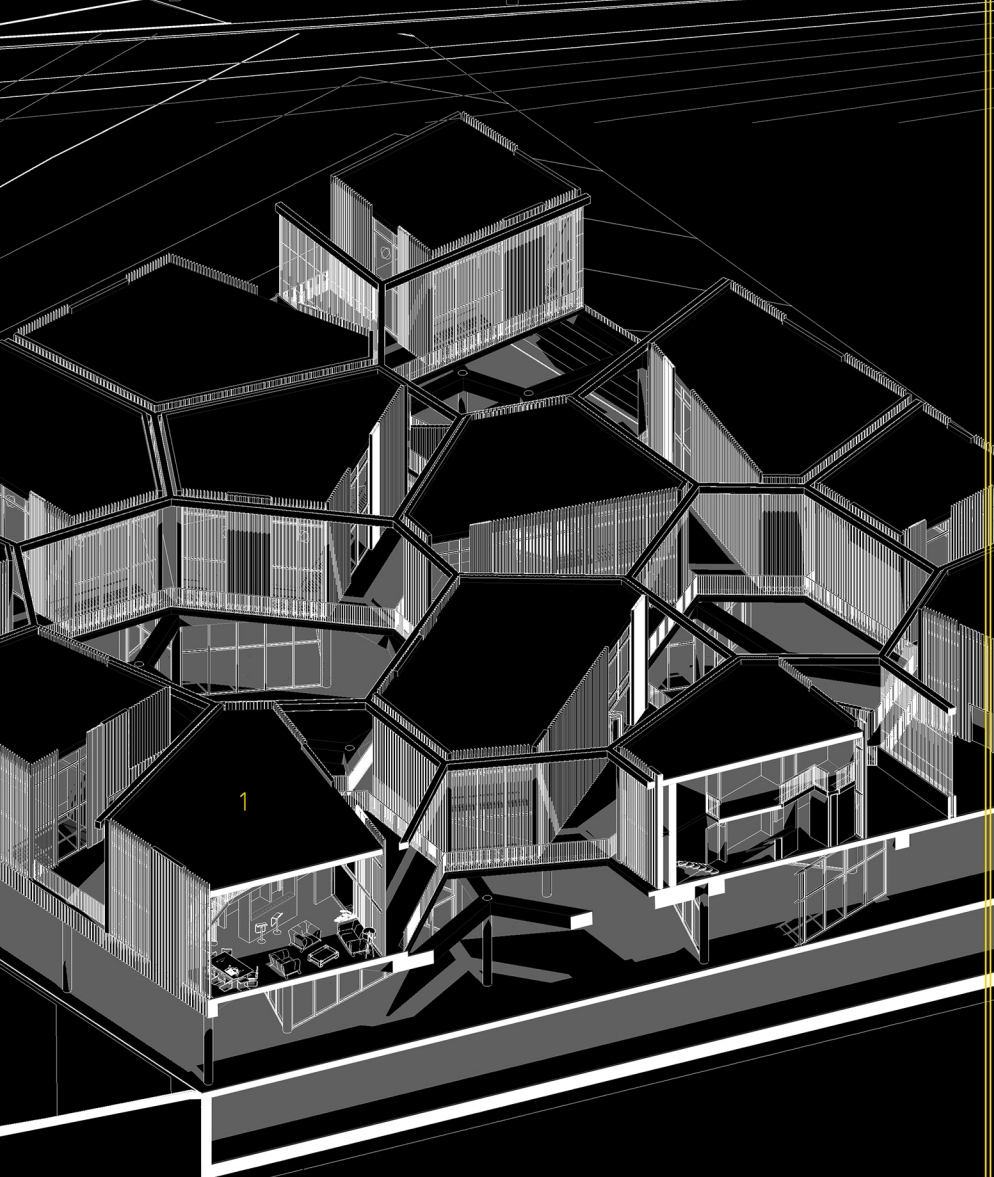
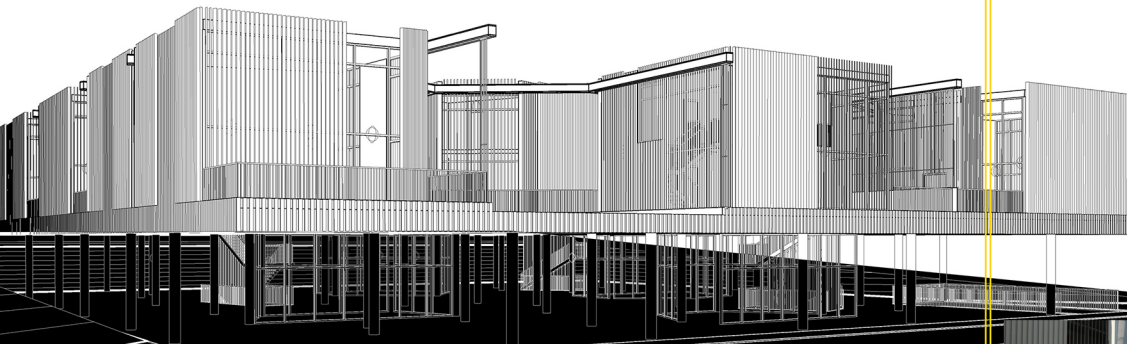
AUTODESK®
REVIT®

University of Belgrade, Faculty of Architecture
Undergraduated studies
Winter semestar 2013/2014.

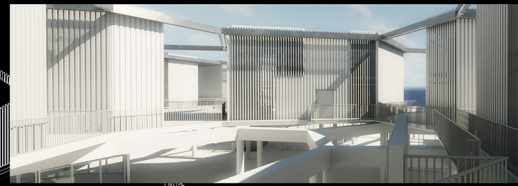
Modul 17 – kurs 17.1: Integrirano modelovanje
arhitektonskih objekata - Revit
mentor: doc. dr. Mirjana Devetaković Radojević
Student: Jovančević Bojan 54/2011



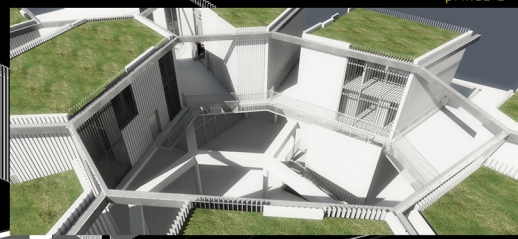
Exercise 01-
STAMBENA KUĆA



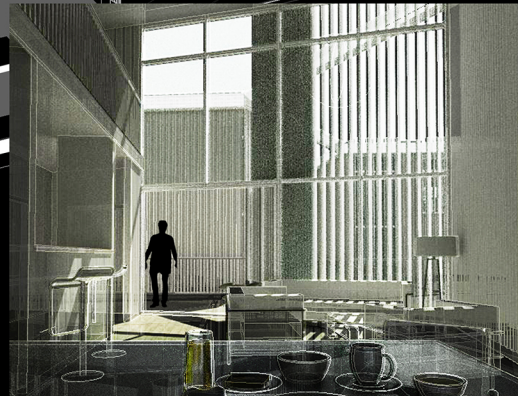
prikaz 1



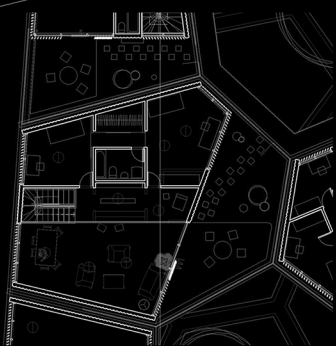
prikaz 2



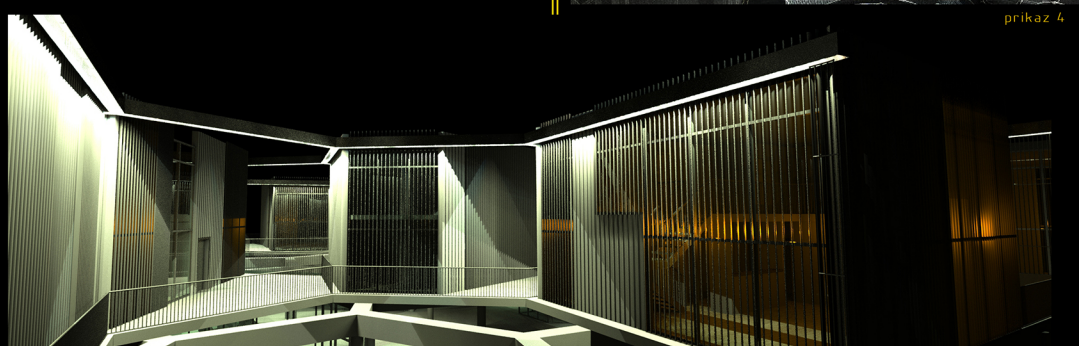
prikaz 3



prikaz 4



1/ osnova jedinice R=1:500



prikaz 5