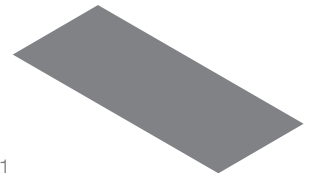
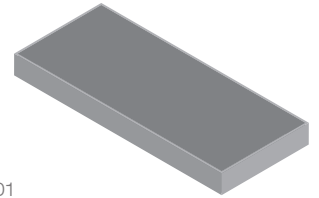


# PROSTORNA FORMA NA BAZI DUALNIH AFINIH TRANSFORMACIJA DOBIJENA SESTOSTRUKOM TRANSFORMACIJOM ZADATOG MODULA



01



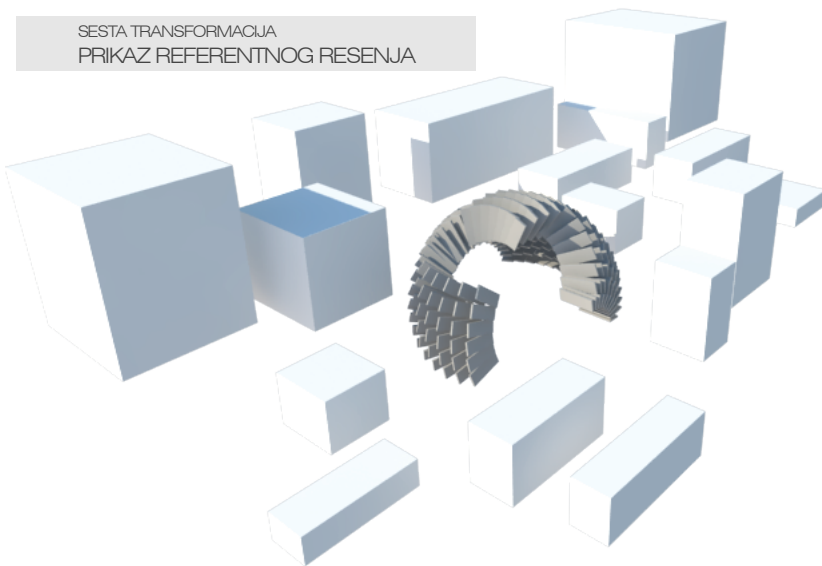
01

KREIRANJE OSNOVNOG MODULA

01 PRVI KORAK

02 DRUGI KORAK

SESTA TRANSFORMACIJA  
PRIKAZ REFERENTNOG RESENJA



PRVA TRANSFORMACIJA

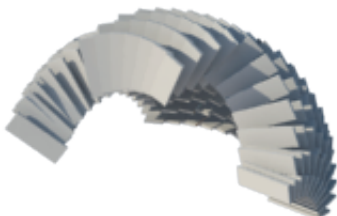


DRUGA TRANSFORMACIJA

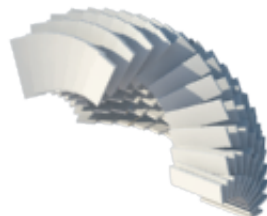
PARAMETRI TRANSFORMACIJA

1  
tx1:0 | ty1:0 | tz1:50  
rx1:0 | ry1:0 | rz1:10  
sx1:1 | sy1:1 | sz1:1  
ni:6

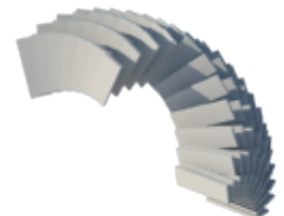
2  
tx2:0 | ty2:0 | tz2:50  
rx2:10 | ry2:0 | rz2:0  
sx2:1 | sy2:1 | sz2:1  
ni:5



PETA TRANSFORMACIJA



ČETVRTA TRANSFORMACIJA



TREĆA TRANSFORMACIJA