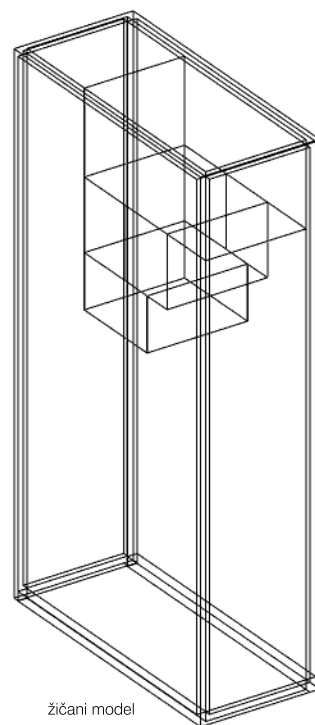




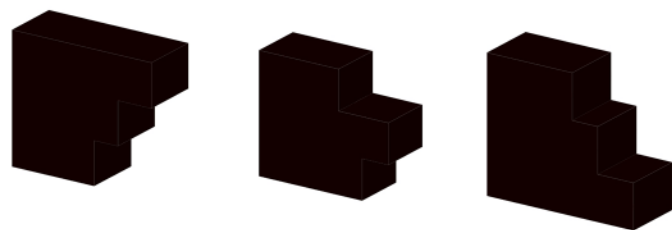
3D model cele kuće

Projekat je smešten na obali mora. Sastoji se od rama koji nosi čitavu konstrukciju, zatega na koje se oslanjaju kubusi, nastali od zasebnih kapsula. Kapsule se oslanjaju na zatege po njima se kreću, svaka od njih ima različitu funkciju. Kretanje kapsula uslovljeno je kretanjem korisnika koji se nalazi unutar neke od njih. Različitim položajima kapsula stvaraju se različiti kubusi.

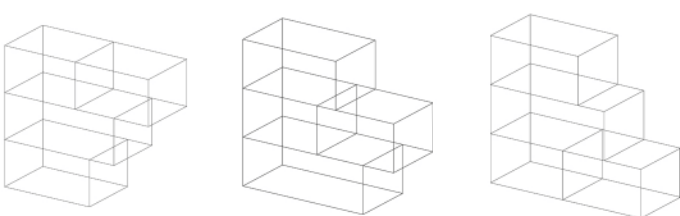


žičani model

3D modeli kubusa



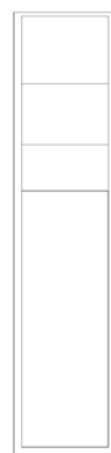
žičani modeli kubusa



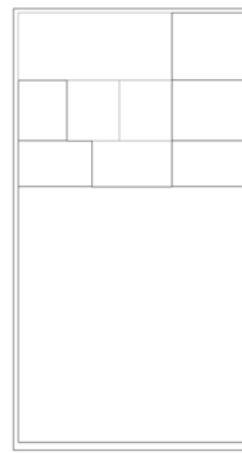
pogled odozgo



pogled odozdo

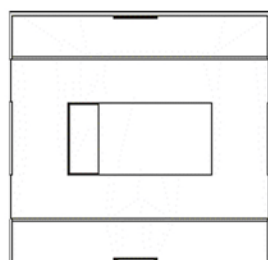


pogled sa strane

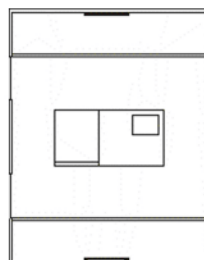


pogled spreda

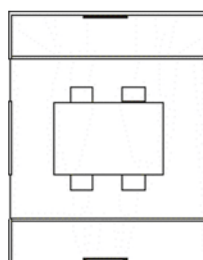
osnova 1



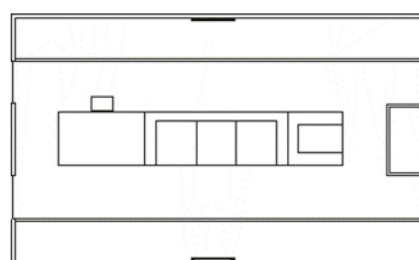
osnova 2



osnova 3



osnova 4



osnove kapsula