

Home for lifeguard Principle of CAAD

Lifeguard towers are used to watch and supervise swimmers in order to prevent drownings and other dangers. Lifeguards scan for trouble from the structures, which vary from beach bungalows by the ocean to poolside towers. Lifeguard towers are also used to spot sharks and other threats. The towers have featured in television shows including Baywatch. Their construction is sometimes paid for with fundraisers, and their operation and staffing is subject to funding availability. Design contests have challenged architects to offer their visions of the structures.

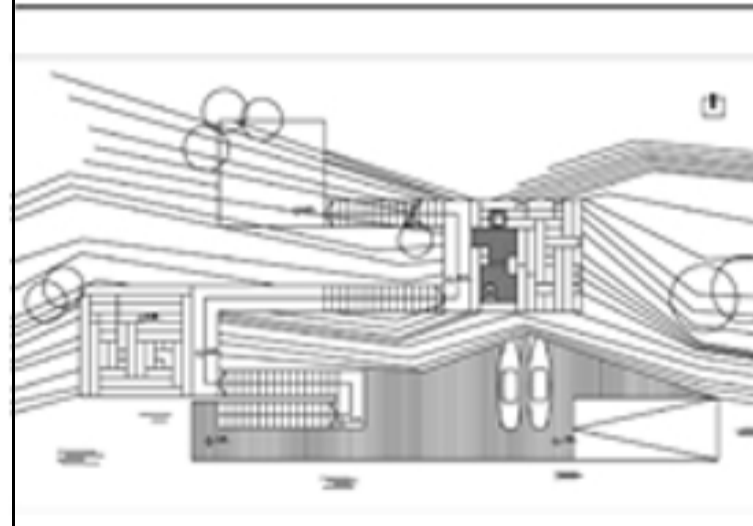
anja dedovic 102/2012



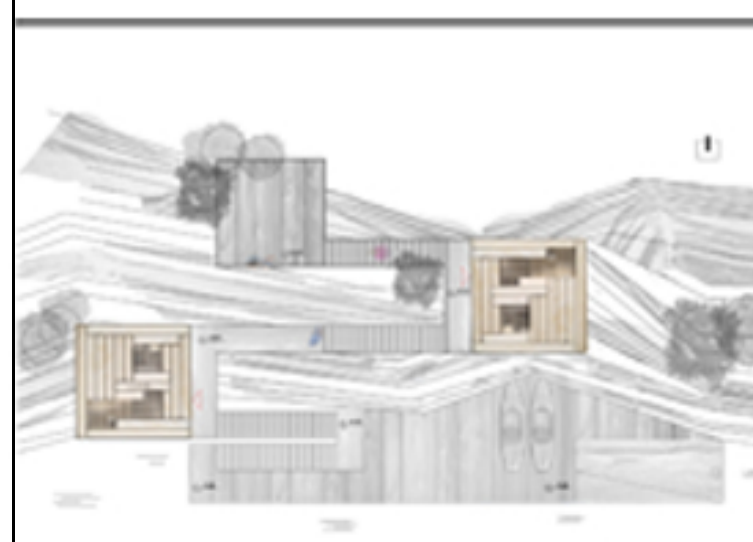
Section I



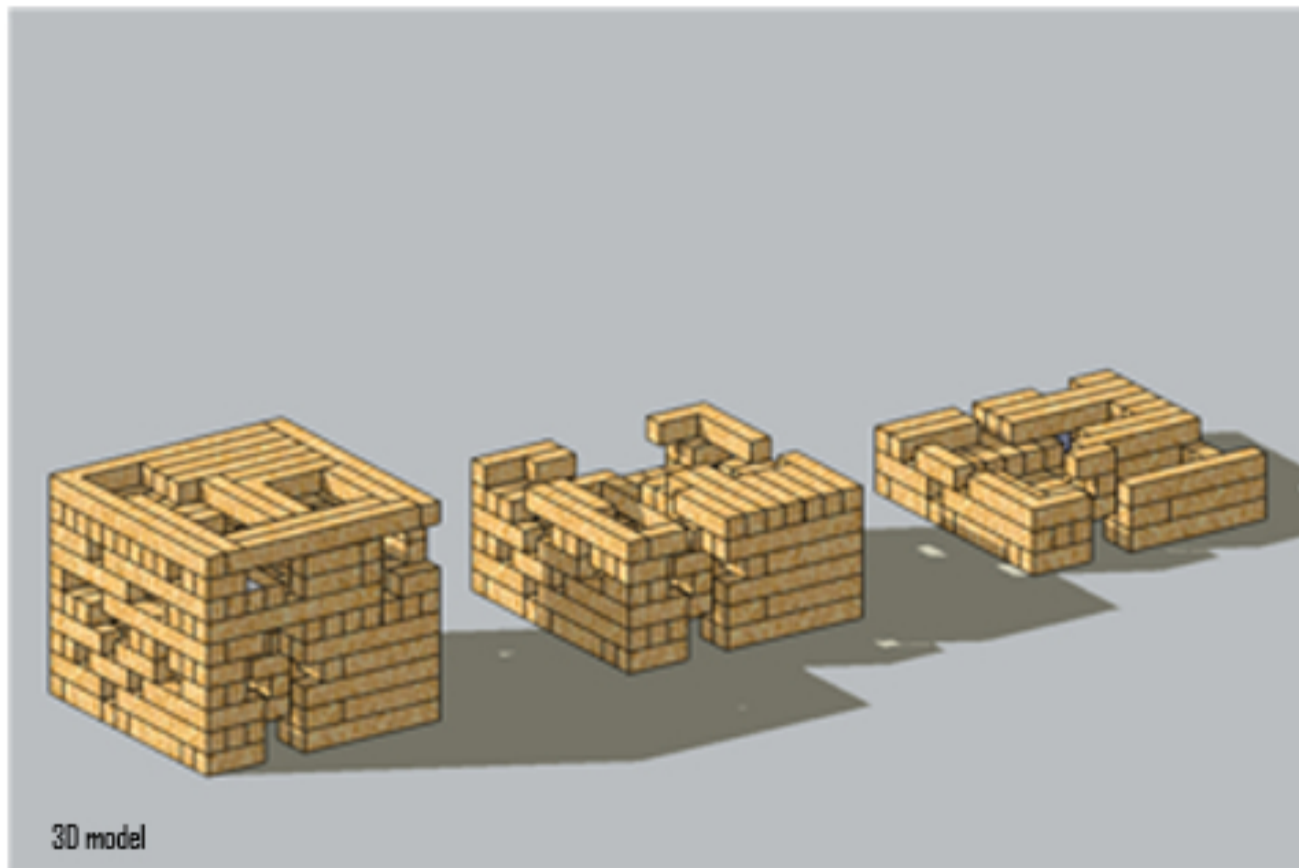
Section II



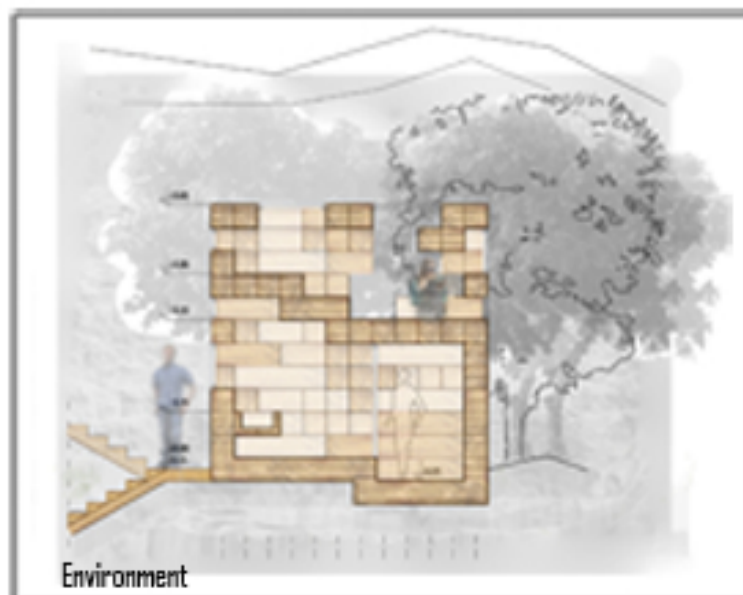
Parter



Situation-Environment



3D model



Environment