

CAAD

Svetionik

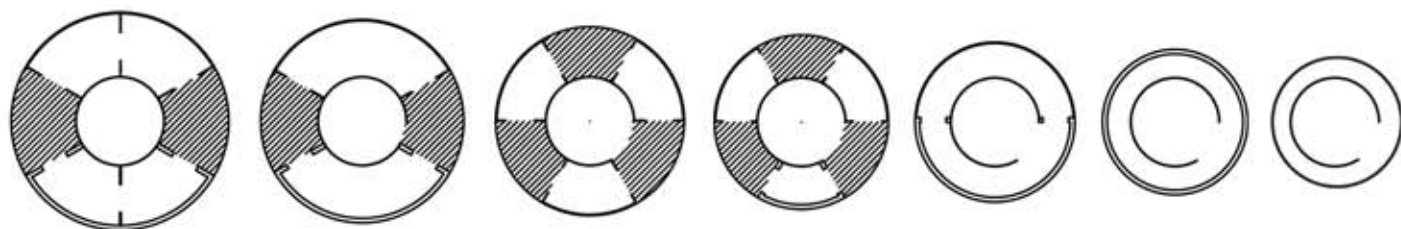
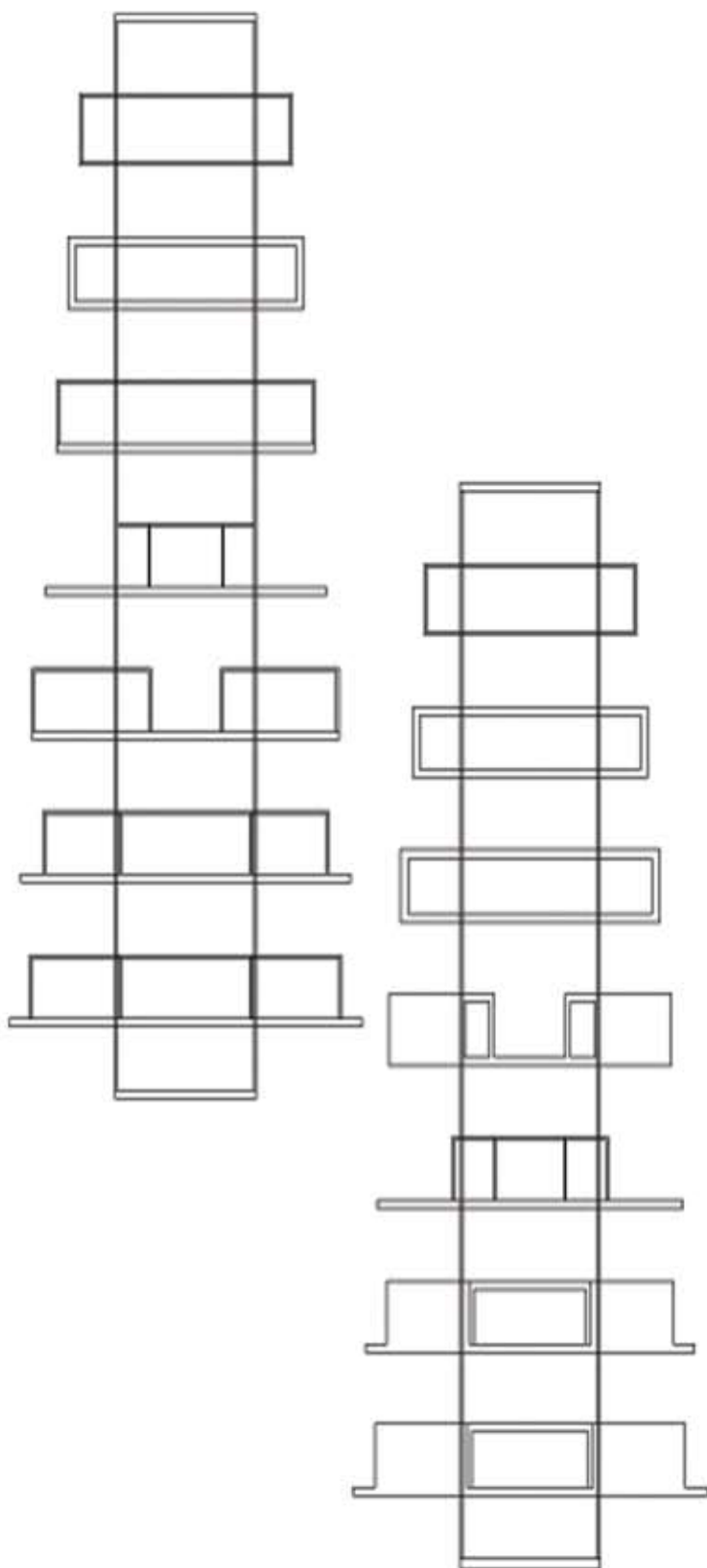
Preseci, osnove, koncept, fotografije

Težnja projekta je svetionik tradicionalnog oblika modifikovan deljenjem na sedmine u slučaju visina i šestine u slučaju nivoa i zatim analiza podela i time dobijanje prostora različitih oblika na nivoima, izgrađenim od stakla ili betona – jedna polovina u staklu a druga u betonu. Zatim kružne osnove objekta dobijaju svoju tačnu lokaciju zavisno od pozicije sunca, tako da stakleni delovi objekta budu pozicionirani na severnoj strani, a betonski na jugu. Podela takođe čini jasnu razliku između otvorenog prostora – i u slučaju odnosa balkoni/sobe, ali i odnosa stakla i betona takođe. Nakon određivanja pozicija osnova, staklena cev je implementirana u sredinu kao lift koji povezuje sve nivoe, ali takođe reflektuje vodu i svetlost čineći da se ceo objekat više uklapa u sredinu.

Postoji i podela "ispod vode i iznad vode", s obzirom da je jedan nivo ispod vode i da se do prostorija dolazi podvodnim putem (uključena je i komora za ekstrakciju vode).

Aim of the project is making a traditional-shaped lighthouse modified by splitting height on seven and levels on six parts and then analyzing the division and by it getting shapes of spaces on levels, made of glass or concrete (one half is all in glass or concrete). Then the levels of circle base get their exact location depending on position of sun, so that glass spaces are on the north and concrete spaces on south. The division also makes distinct difference between opened and closed space (balconies and rooms, but glass and concrete spaces as well)

After determined the bases, a tube is implemented in the middle presenting the elevator that connects all levels. The tube also reflects the water and the light making the hole object more fitting in the surrounding. The division on "under and above water" is also noticeable, as one floor is under the water and the way of coming in them is by diving (the pre-chambers for extracting the water are also included).



CAAD Svetionik

Preseci,, osnove,
koncept, fotografije

Težnja projekta je svetionik tradicionalnog oblika modifikovan deljenjem na sedmine u slučaju visina i šestine u slučaju nivoa i zatim analiza podela i time dobijanje prostora različitih oblika na nivoima, izgrađenim od stakla ili betona – jedna polovina u staklu a druga u betonu. Zatim kružne osnove objekta dobijaju svoju tačnu lokaciju zavisno od pozicije sunca, tako da stakleni delovi objekta budu pozicionirani na severnoj strani, a betonski na jugu. Podela takođe čini jasnu razliku između otvorenog prostora – i u slučaju odnosa balkoni/sobe, ali i odnosa stakla i betona takođe. Nakon određivanja pozicija osnova, staklena cev je implementirana u sredinu kao lift koji povezuje sve nivoe, ali takođe reflektuje vodu i svetlost čineći da se ceo objekat više uklapa u sredinu. Postoji i podela "ispod vode i iznad vode", s obzirom da je jedan nivo ispod vode i da se do prostorija dolazi podvodnim putem (uključena je i komora za ekstrakciju vode).

Aim of the project is making a traditional-shaped lighthouse modified by splitting height on seven and levels on six parts and then analyzing the division and by it getting shapes of spaces on levels, made of glass or concrete (one half is all in glass and the other one in concrete). Then the levels of circle base get their exact location depending on position of sun, so that glass spaces are on the north and concrete spaces on south. The division also makes distinct difference between opened and closed space (balconies and rooms, but glass and concrete spaces as well) After determined the bases, a tube is implemented in the middle presenting the elevator that connects all levels. The tube also reflects the water and the light making the hole object more fitting in the surrounding. The division on "under and above water" is also noticeable, as one floor is under the water and the way of coming in them is by diving (the pre-chambers for extracting the water are also included).

