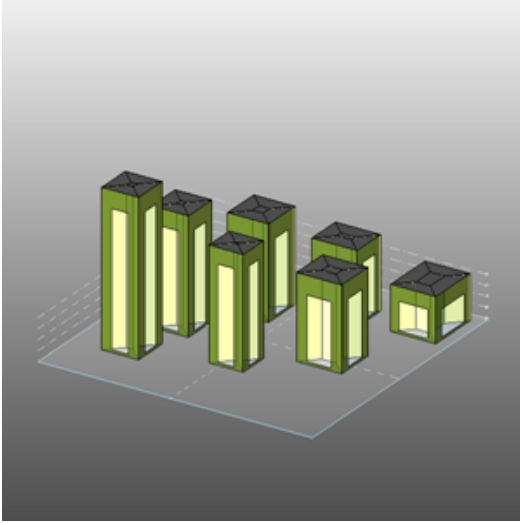


Project1

Milena project vasari

Analyzed at 12/24/2011 8:23:21 PM

Mass



Building Performance Factors

Location:	Boston, MA
Weather Station:	53158
Outdoor Temperature:	Max: 82°F/Min: -10°F
Floor Area:	10,879 sf
Exterior Wall Area:	98,497 sf
Average Lighting Power:	1.01 W / ft ²
People:	35 people
Exterior Window Ratio:	0.40
Electrical Cost:	\$0.16 / kWh
Fuel Cost:	\$1.25 / Therm

Energy Use Intensity

Electricity EUI:	60 kWh / sf / yr
Fuel EUI:	479 kBtu / sf / yr
Total EUI:	682 kBtu / sf / yr

Life Cycle Energy Use/Cost

Life Cycle Electricity Use:	19,424,487 kWh
Life Cycle Fuel Use:	1,564,268 Therms
Life Cycle Energy Cost:	\$2,281,944

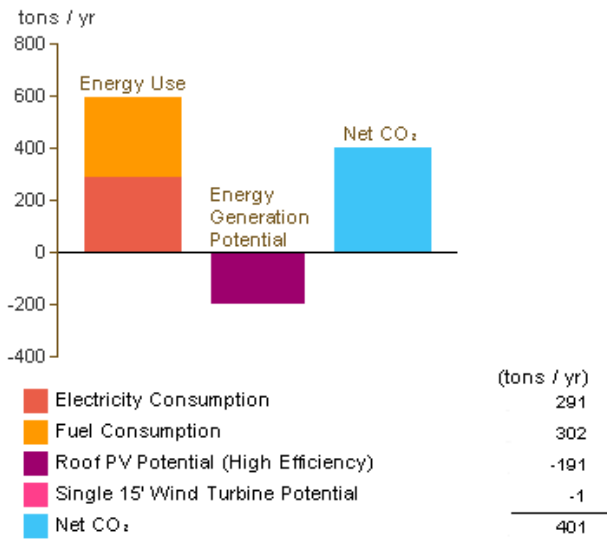
*30-year life and 6.1% discount rate for costs

Renewable Energy Potential

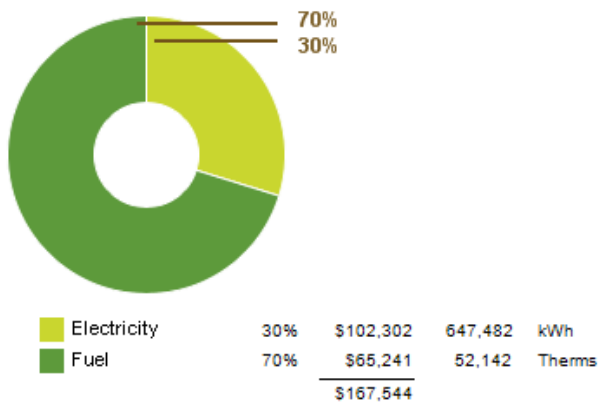
Roof Mounted PV System (Low efficiency):	142,040 kWh / yr
Roof Mounted PV System (Medium efficiency):	284,081 kWh / yr
Roof Mounted PV System (High efficiency):	426,121 kWh / yr
Single 15' Wind Turbine Potential:	2,969 kWh / yr

*PV efficiencies are assumed to be 5%, 10% and 15% for low, medium and high efficiency systems

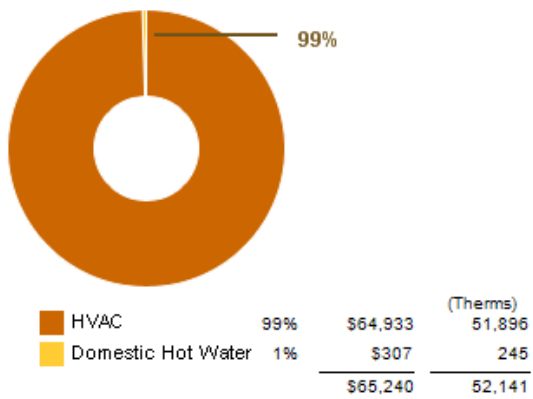
Annual Carbon Emissions



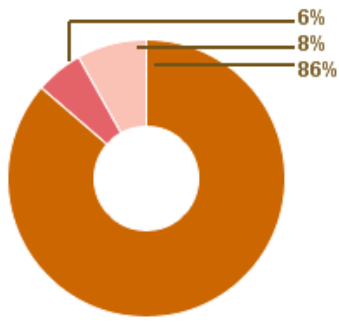
Annual Energy Use/Cost



Energy Use: Fuel

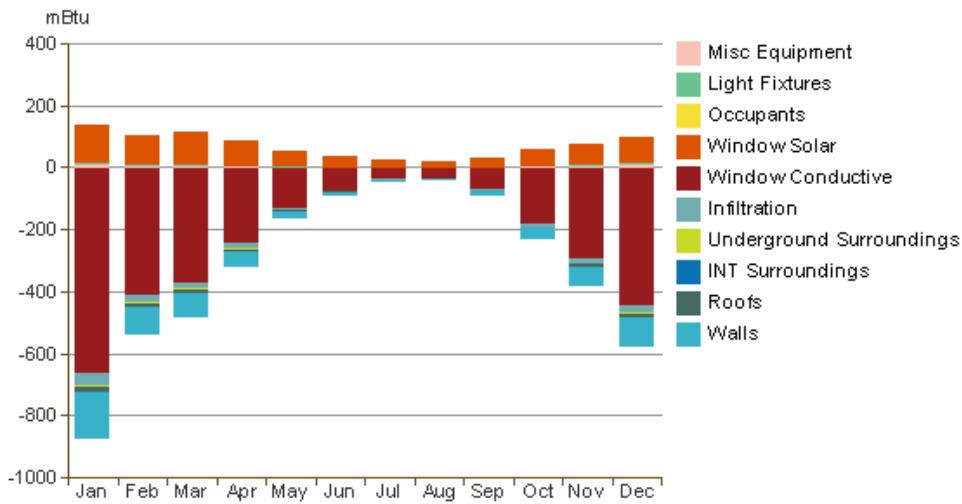


Energy Use: Electricity

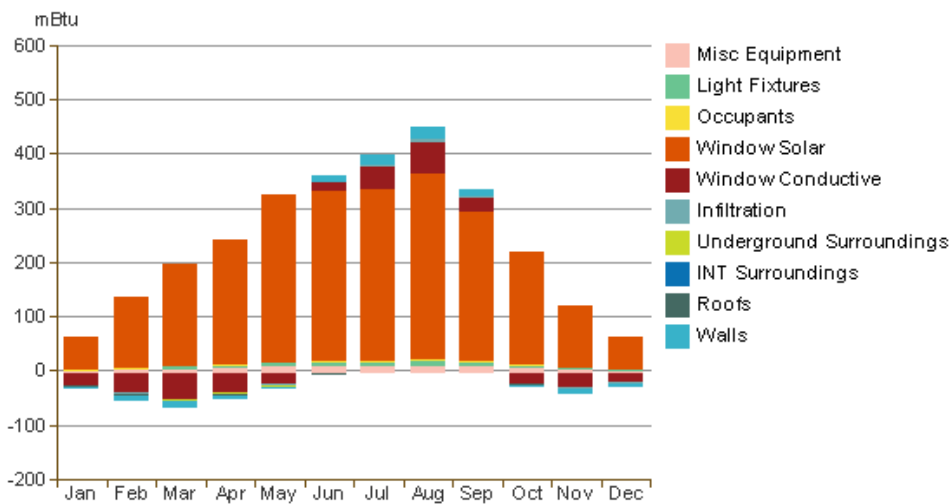


			(kWh)
HVAC	86%	\$88,311	558,935
Lighting	6%	\$5,669	35,884
Misc Equipment	8%	\$8,320	52,661
		\$102,300	647,480

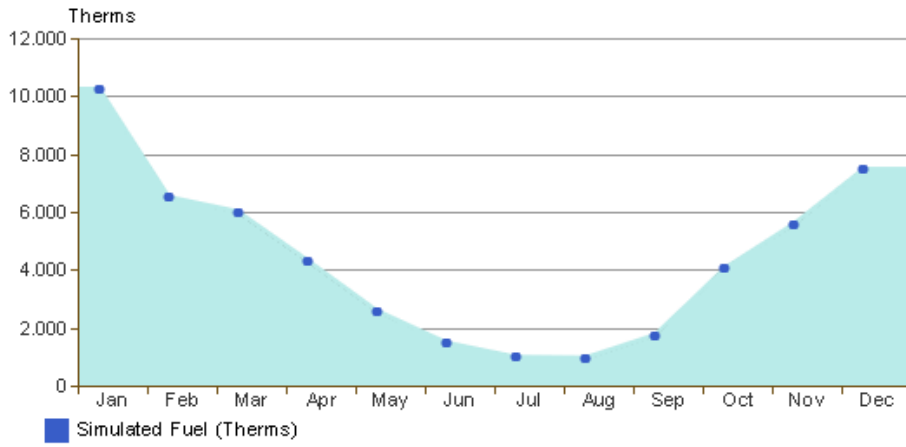
Monthly Heating Load



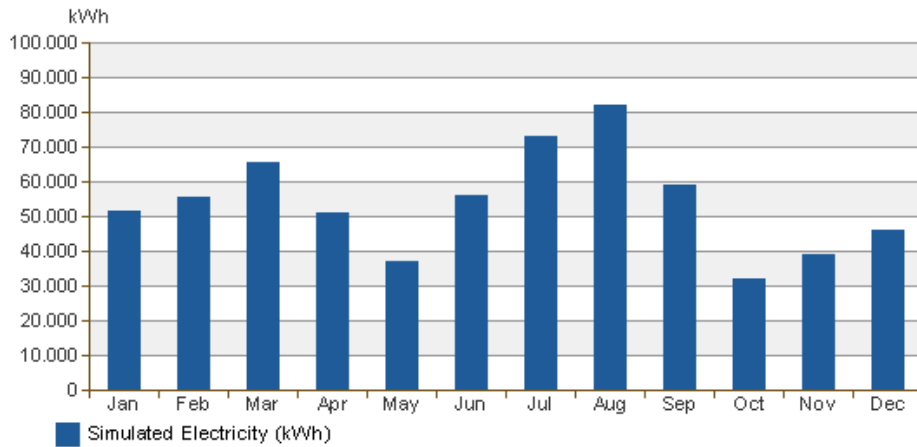
Monthly Cooling Load



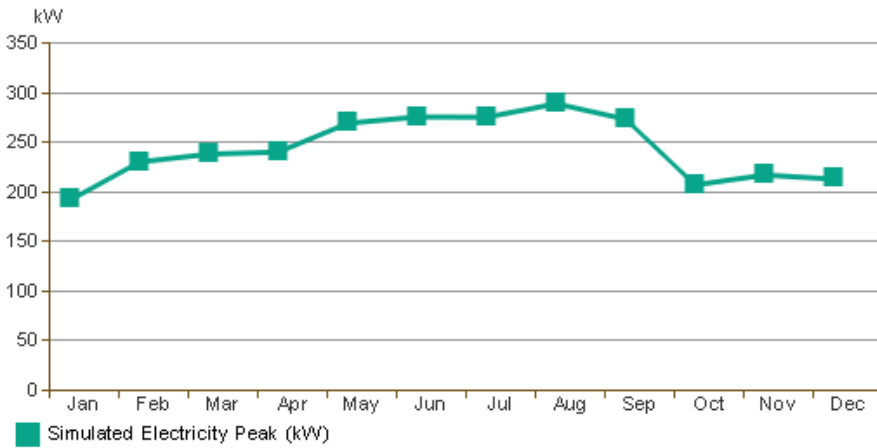
Monthly Fuel Consumption



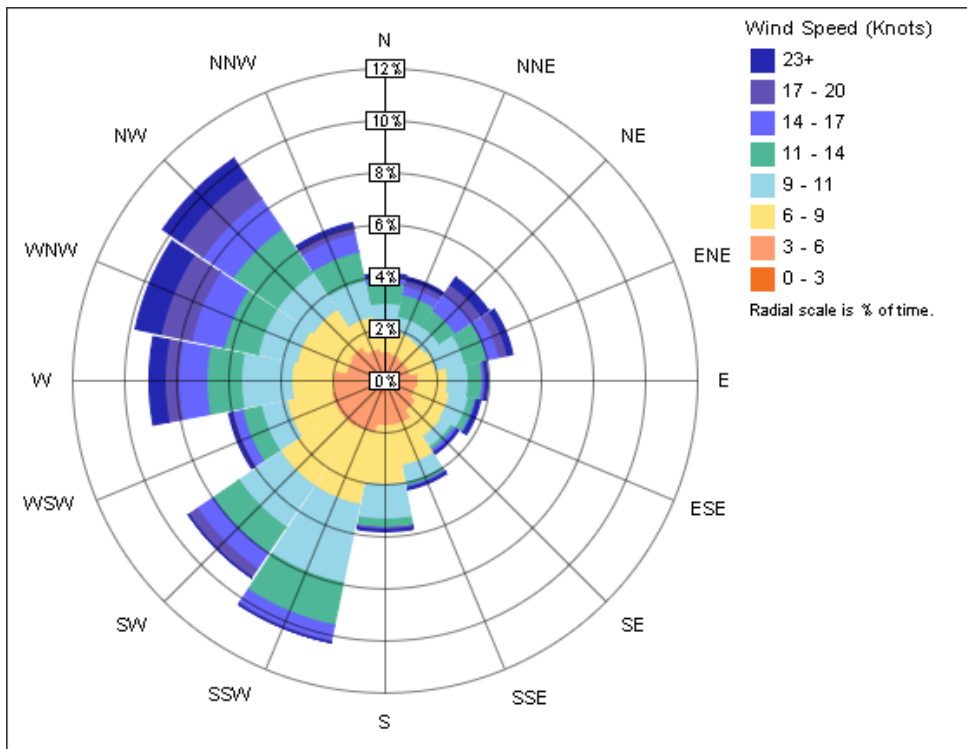
Monthly Electricity Consumption



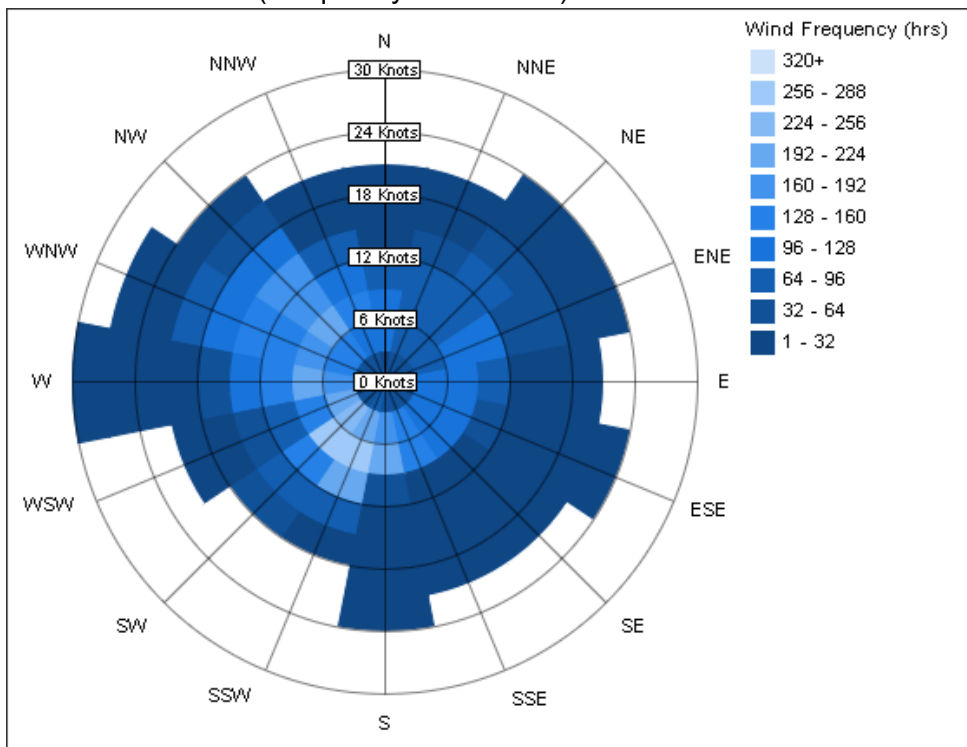
Monthly Peak Demand



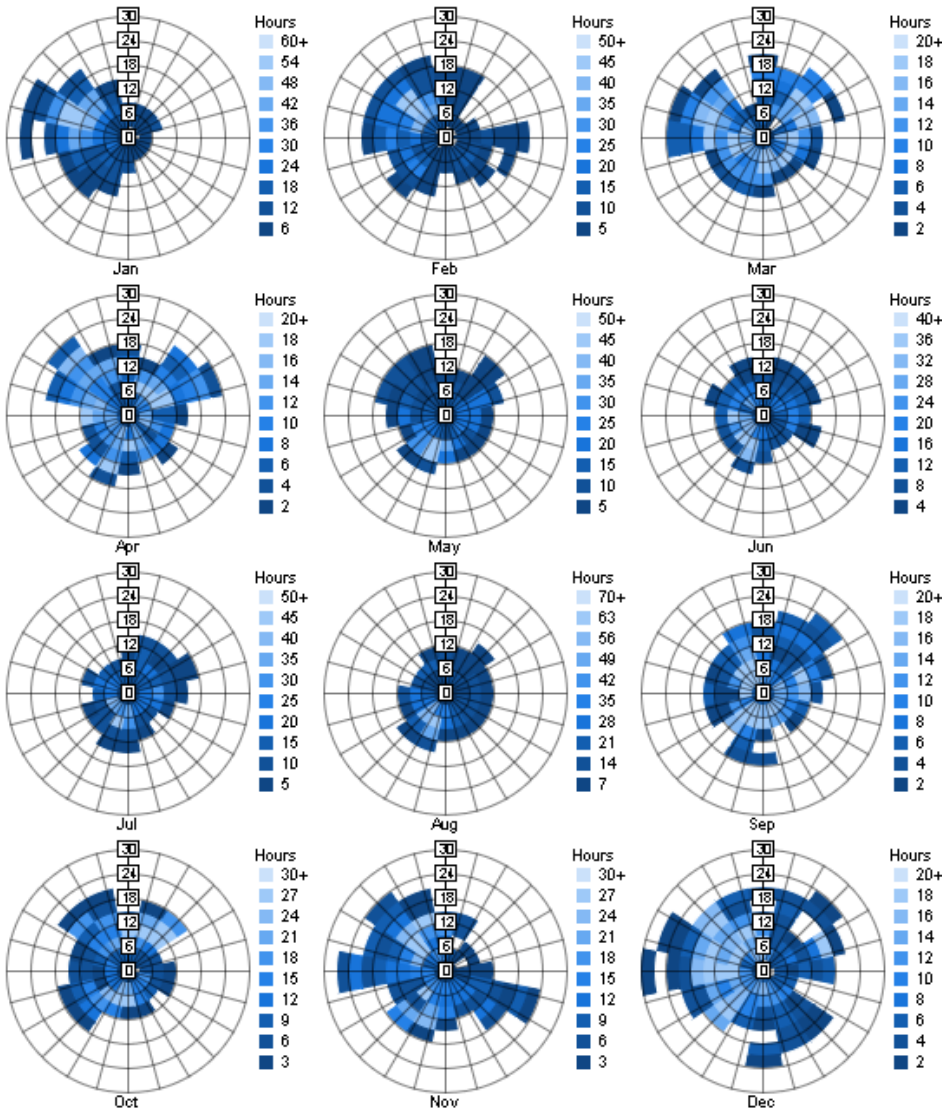
Annual Wind Rose (Speed Distribution)



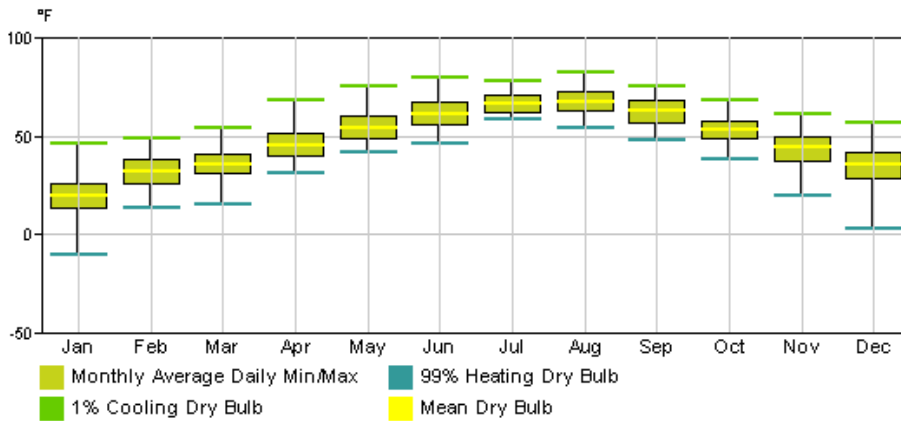
Annual Wind Rose (Frequency Distribution)



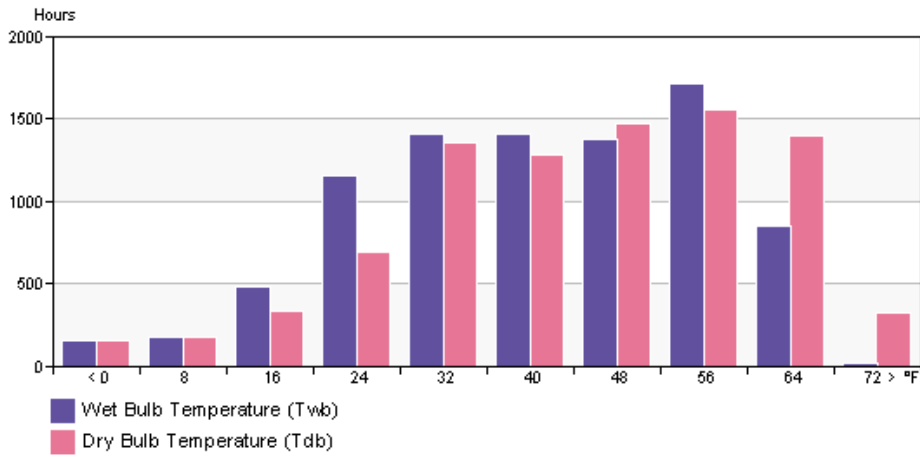
Monthly Wind Roses



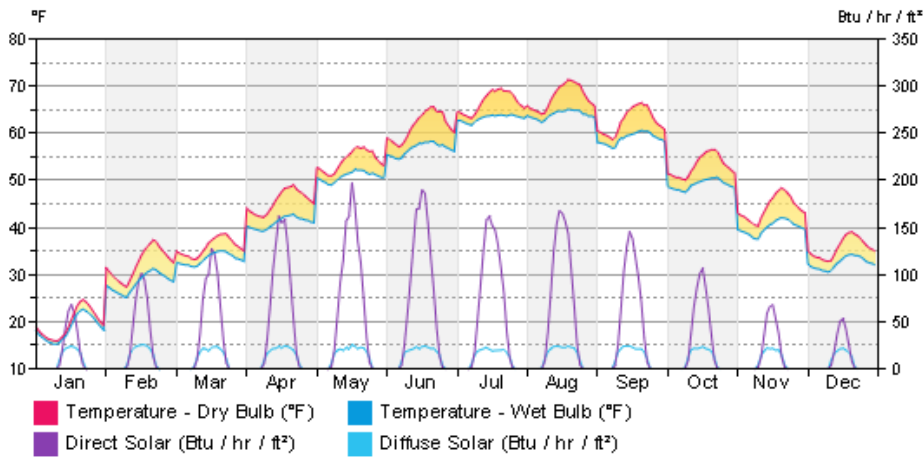
Monthly Design Data



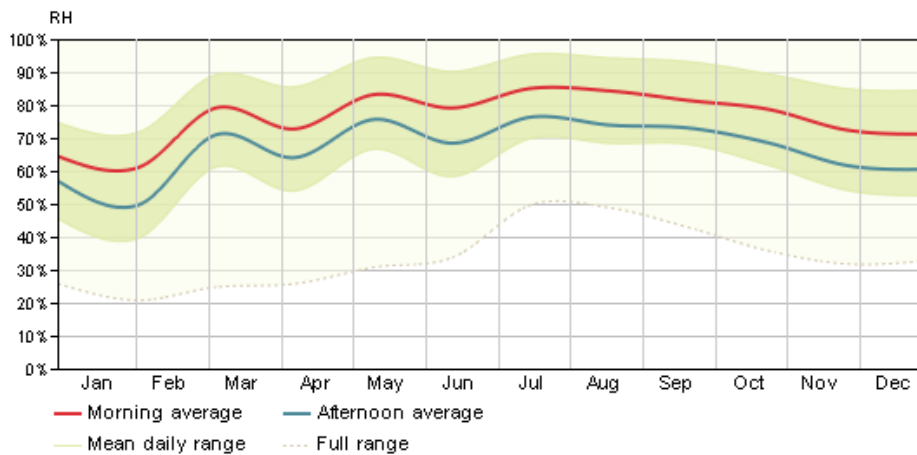
Annual Temperature Bins



Diurnal Weather Averages



Humidity



© Copyright 2011 Autodesk, Inc. All rights reserved. Portions of this software are copyrighted by James J. Hirsch & Associates, the Regents of the University of California, and others.