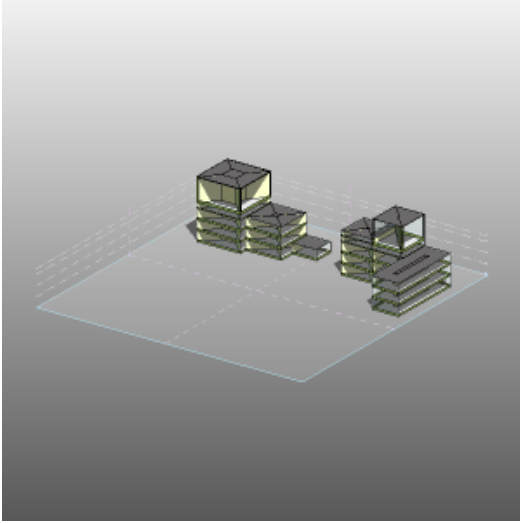


## Project11

prvi

Analyzed at 11/29/2011 1:49:33 PM

## Mass



## Building Performance Factors

Location:	Belgrade, Serbia
Weather Station:	171981
Outdoor Temperature:	Max: 94°F/Min: 6°F
Floor Area:	29,914 sf
Exterior Wall Area:	26,920 sf
Average Lighting Power:	1.20 W / ft <sup>2</sup>
People:	901 people
Exterior Window Ratio:	0.80
Electrical Cost:	\$0.09 / kWh
Fuel Cost:	\$0.78 / Therm

## Energy Use Intensity

Electricity EUI:	21 kWh / sf / yr
Fuel EUI:	124 kBtu / sf / yr
Total EUI:	197 kBtu / sf / yr

## Life Cycle Energy Use/Cost

Life Cycle Electricity Use:	19,173,408 kWh
Life Cycle Fuel Use:	1,114,857 Therms
Life Cycle Energy Cost:	\$1,214,040

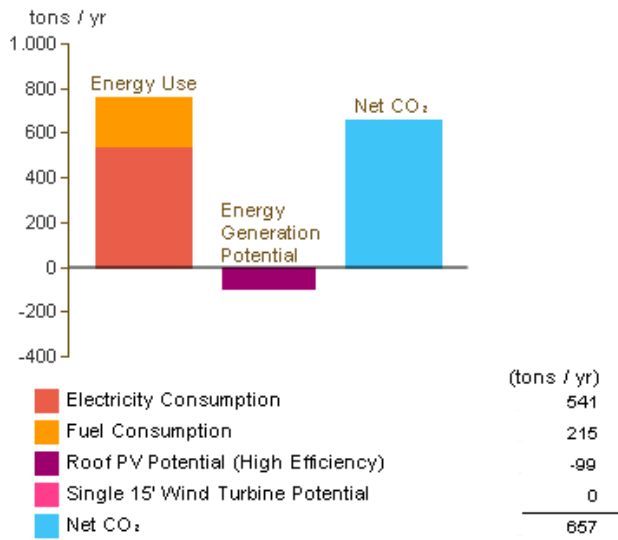
\*30-year life and 6.1% discount rate for costs

## Renewable Energy Potential

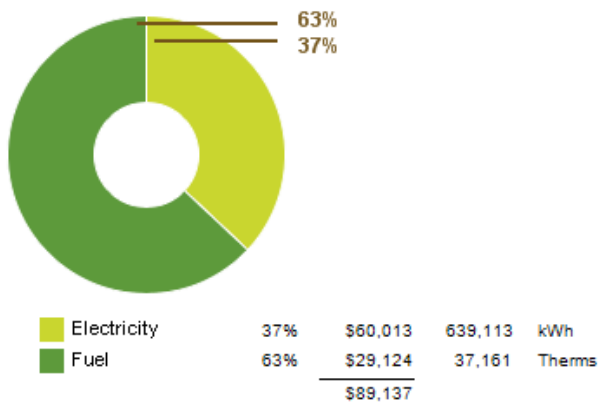
Roof Mounted PV System (Low efficiency):	39,259 kWh / yr
Roof Mounted PV System (Medium efficiency):	78,518 kWh / yr
Roof Mounted PV System (High efficiency):	117,777 kWh / yr
Single 15' Wind Turbine Potential:	670 kWh / yr

\*PV efficiencies are assumed to be 5%, 10% and 15% for low, medium and high efficiency systems

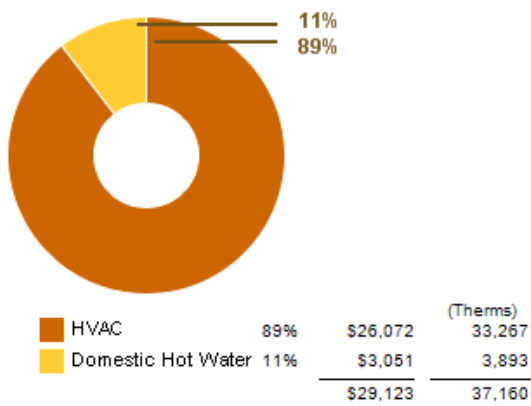
## Annual Carbon Emissions



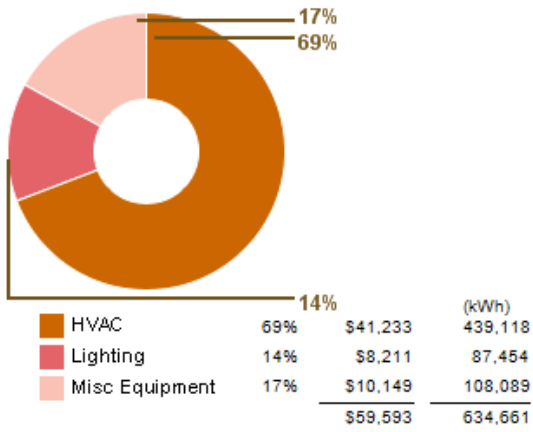
### Annual Energy Use/Cost



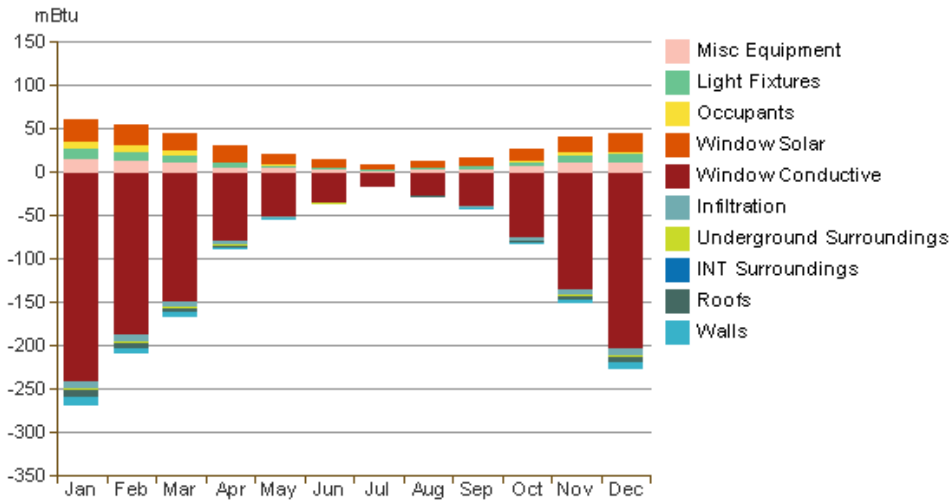
### Energy Use: Fuel



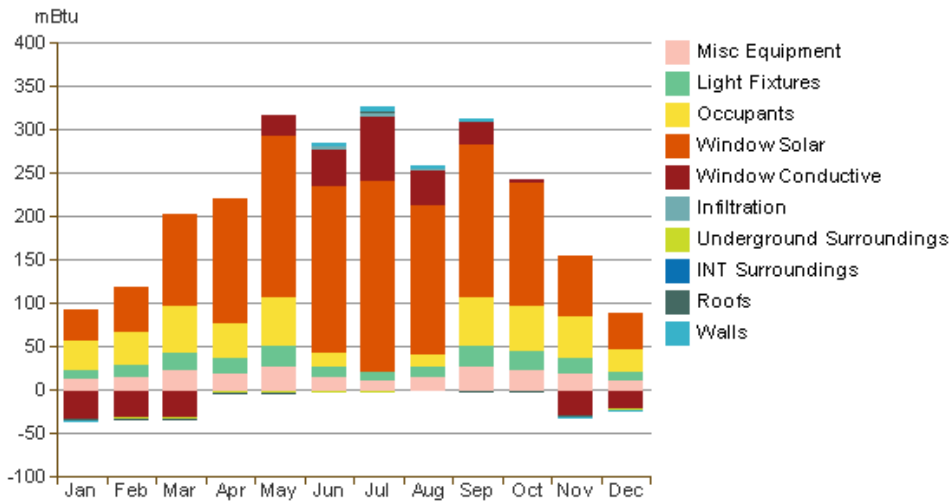
### Energy Use: Electricity



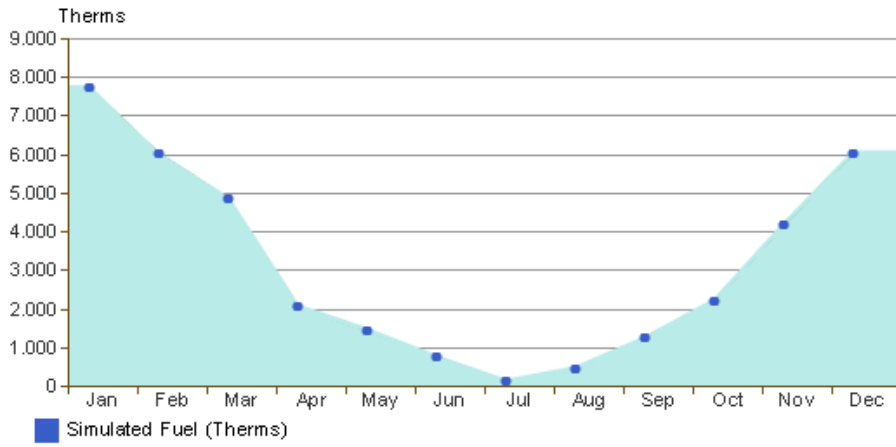
### Monthly Heating Load



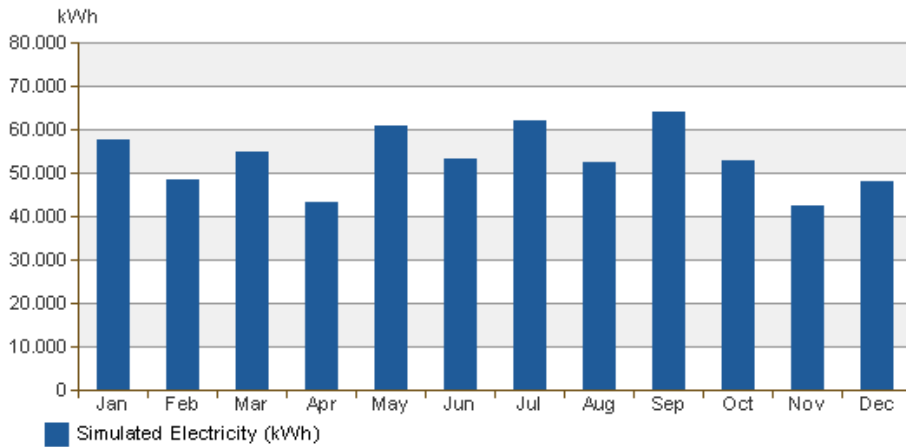
### Monthly Cooling Load



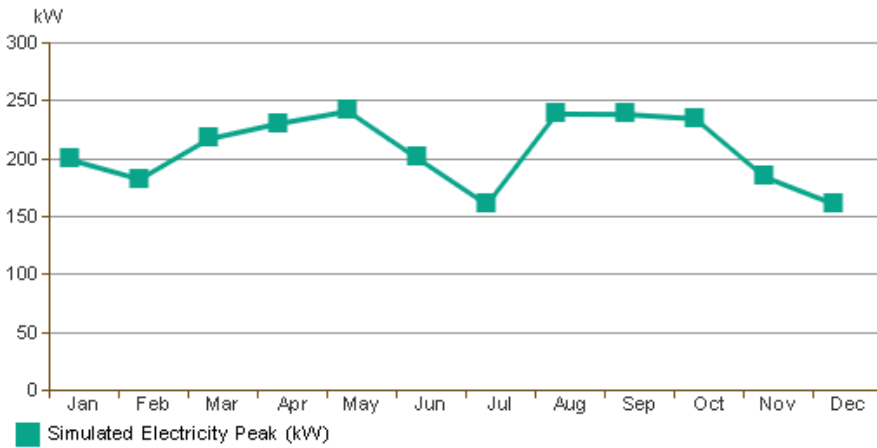
### Monthly Fuel Consumption



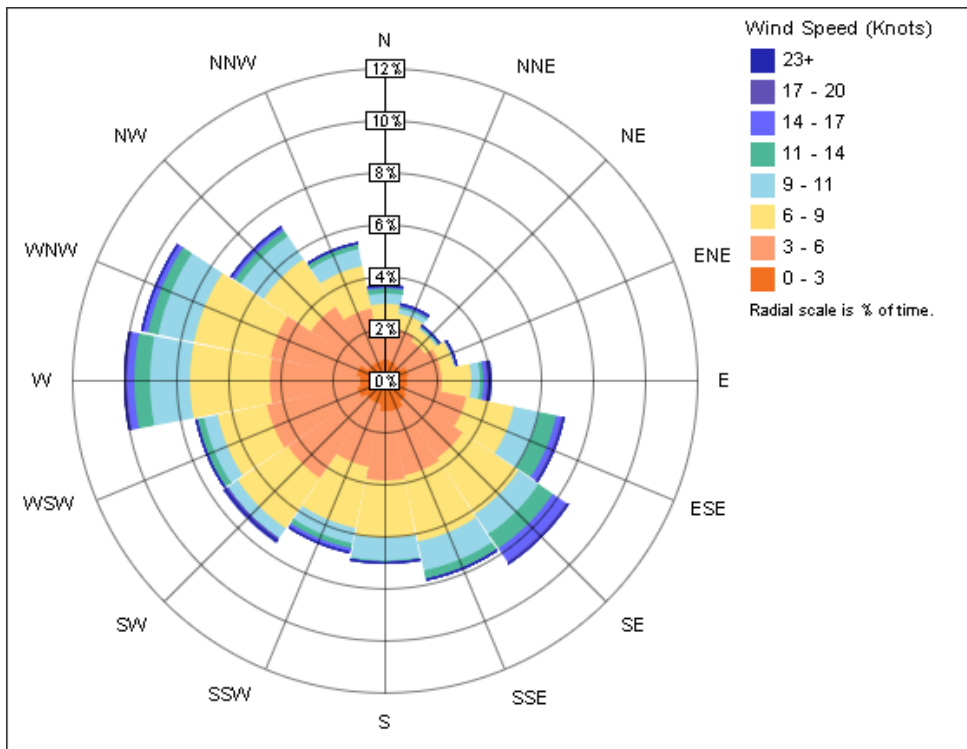
### Monthly Electricity Consumption



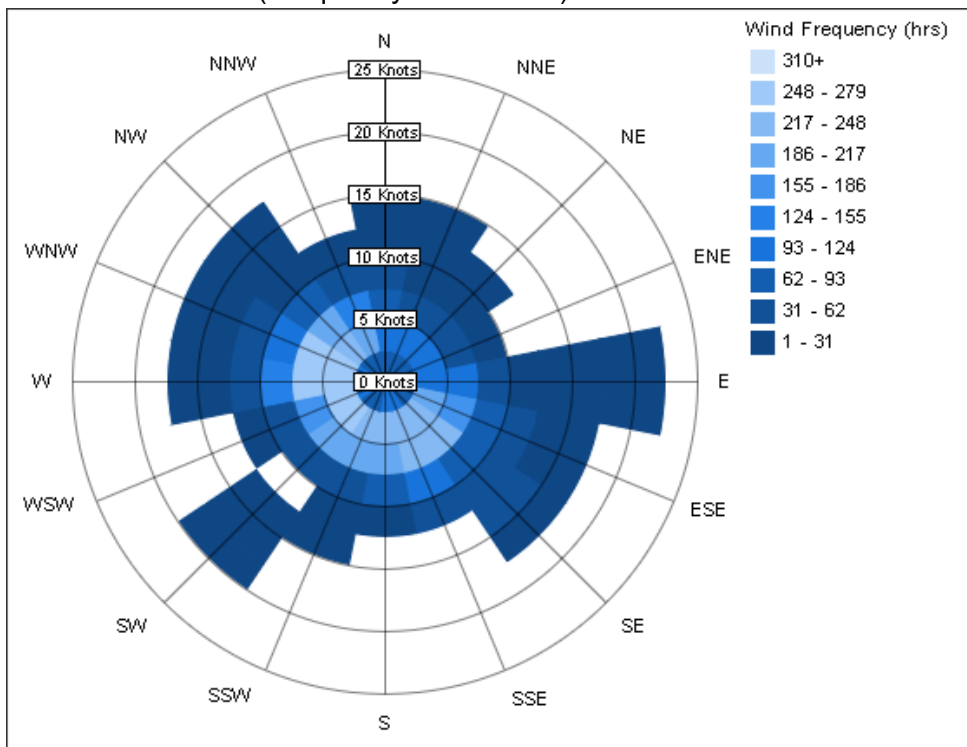
### Monthly Peak Demand



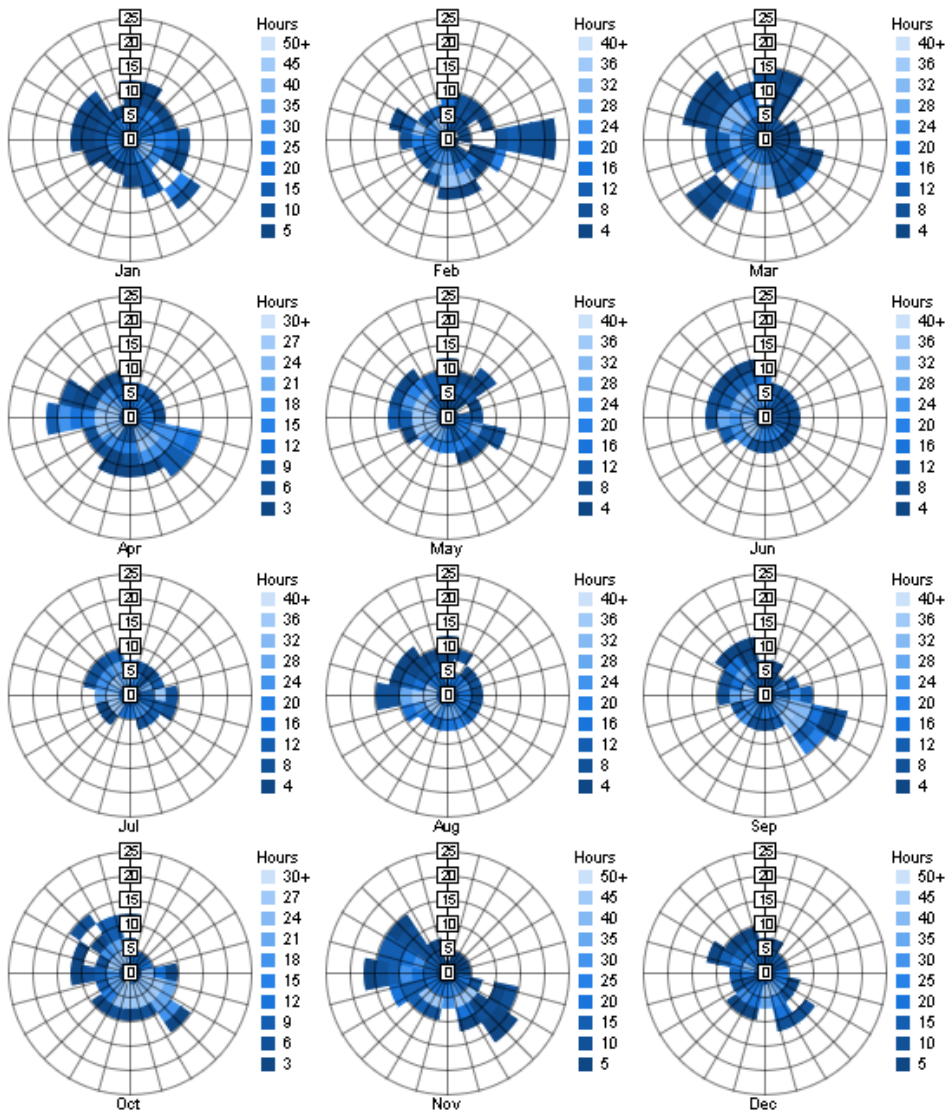
### Annual Wind Rose (Speed Distribution)



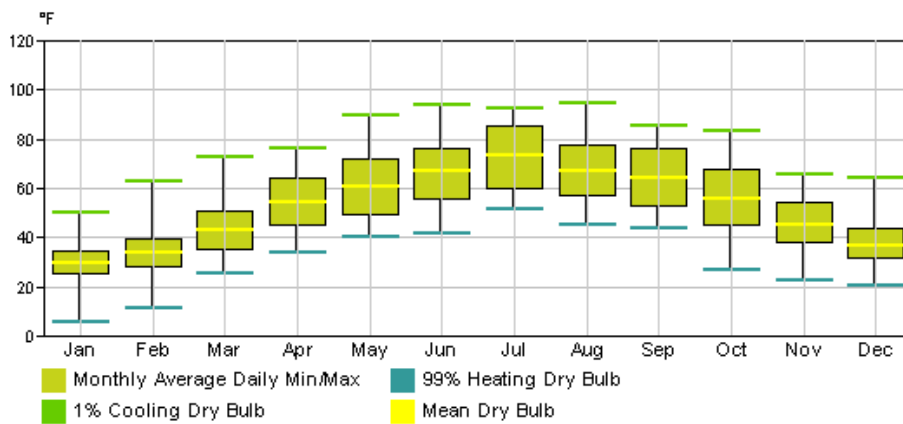
Annual Wind Rose (Frequency Distribution)



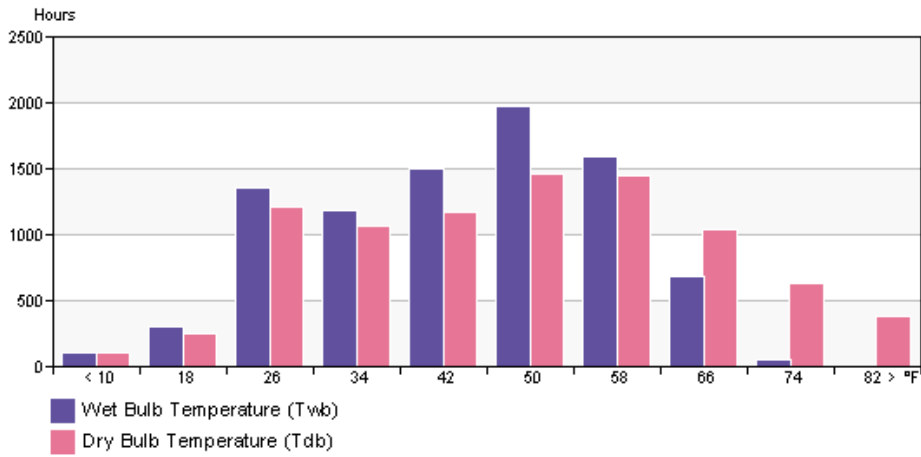
Monthly Wind Roses



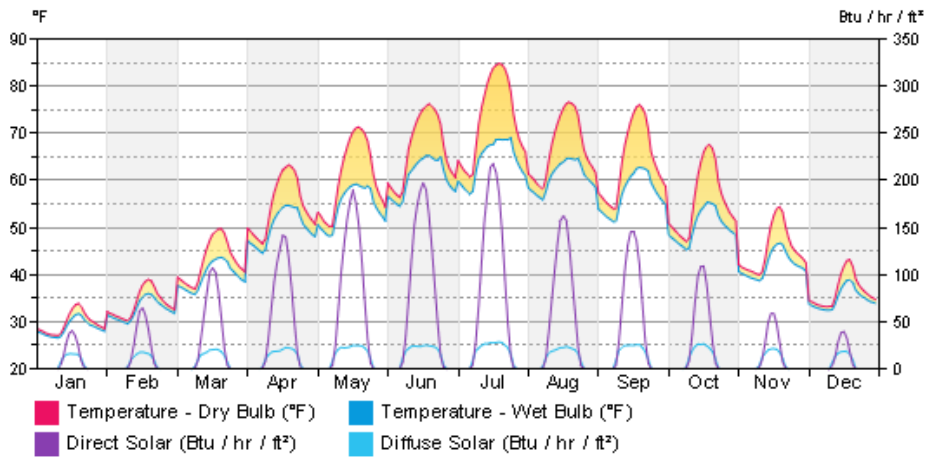
### Monthly Design Data



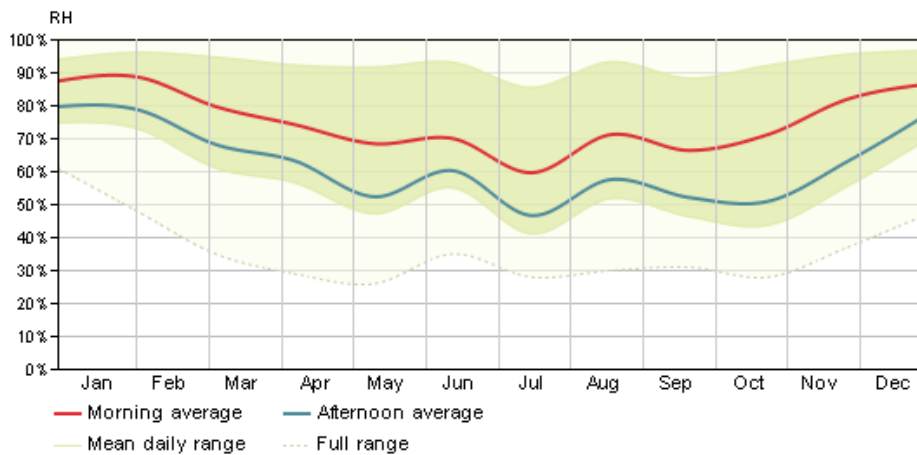
### Annual Temperature Bins



### Diurnal Weather Averages



### Humidity



© Copyright 2011 Autodesk, Inc. All rights reserved. Portions of this software are copyrighted by James J. Hirsch & Associates, the Regents of the University of California, and others.