

Autodesk®

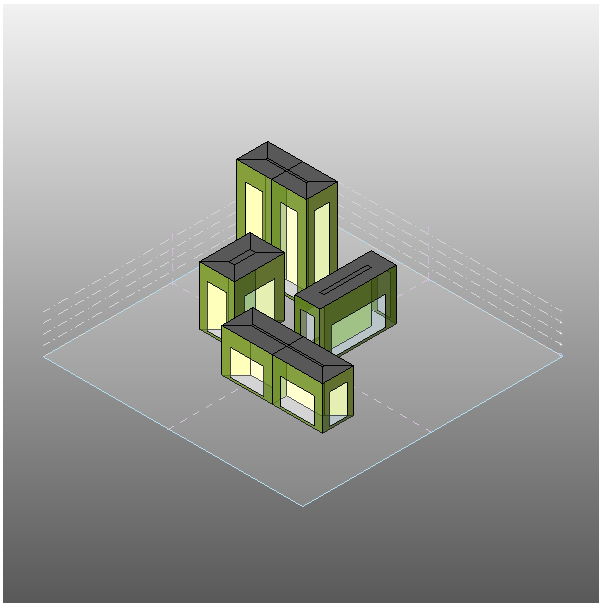
Project1

Project1 Analysis (1)

Analyzed at 11/29/2011 11:57:19 AM

Version 2012.2.21.3448(DOE-2.2-44e4)

Mass



Building Performance Factors

Location:	Boston, MA
Weather Station:	53158
Outdoor Temperature:	Max: 82°F/Min: -10°F
Floor Area:	9,535 sf
Exterior Wall Area:	53,776 sf
Average Lighting Power:	1.01 W / ft ²
People:	31 people
Exterior Window Ratio:	0.40
Electrical Cost:	\$0.16 / kWh
Fuel Cost:	\$1.25 / Therm

Energy Use Intensity

Electricity EUI:	38 kWh / sf / yr
Fuel EUI:	281 kBtu / sf / yr
Total EUI:	410 kBtu / sf / yr

Life Cycle Energy Use/Cost

Life Cycle Electricity Use:	10,864,938 kWh
Life Cycle Fuel Use:	802,817 Therms
Life Cycle Energy Cost:	\$1,235,406

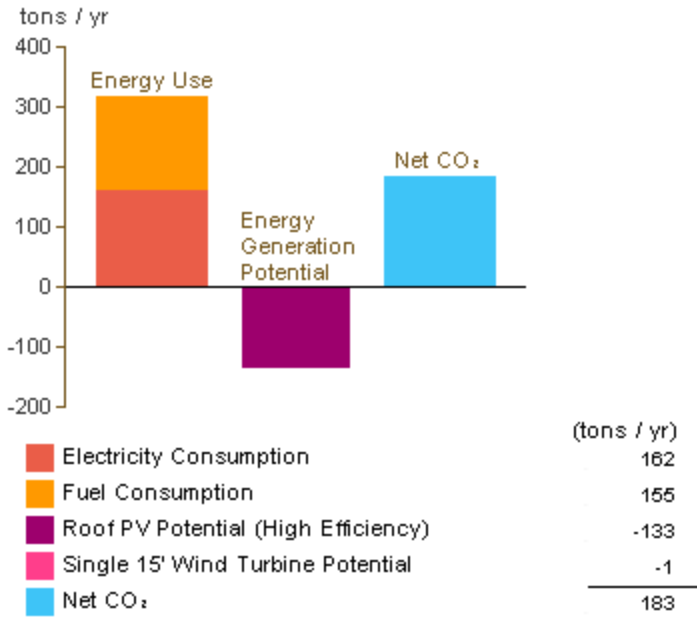
*30-year life and 6.1% discount rate for costs

Renewable Energy Potential

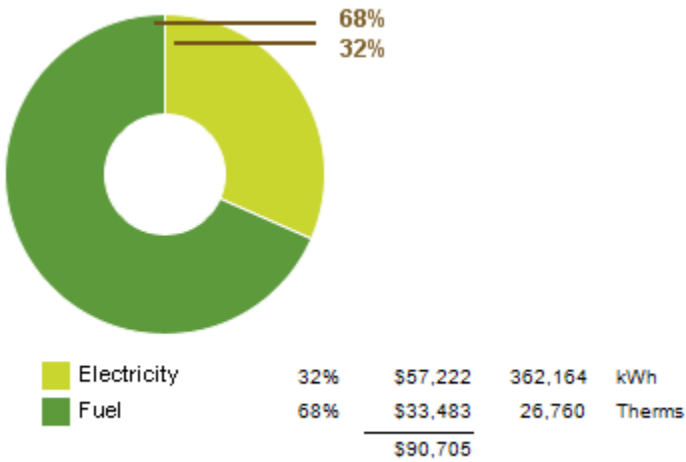
Roof Mounted PV System (Low efficiency):	98,730 kWh / yr
Roof Mounted PV System (Medium efficiency):	197,459 kWh / yr
Roof Mounted PV System (High efficiency):	296,189 kWh / yr
Single 15' Wind Turbine Potential:	2,969 kWh / yr

*PV efficiencies are assumed to be 5%, 10% and 15% for low, medium and high efficiency systems

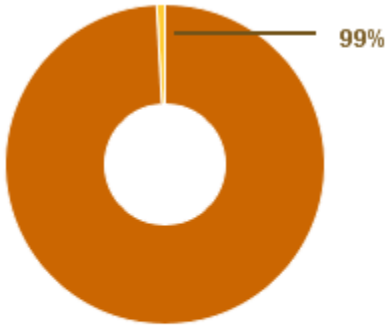
Annual Carbon Emissions



Annual Energy Use/Cost

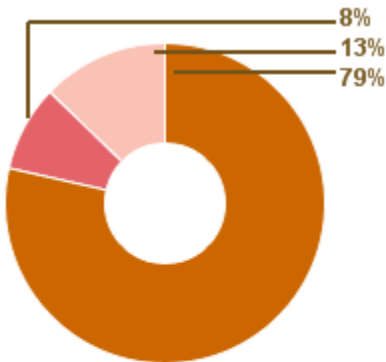


Energy Use: Fuel



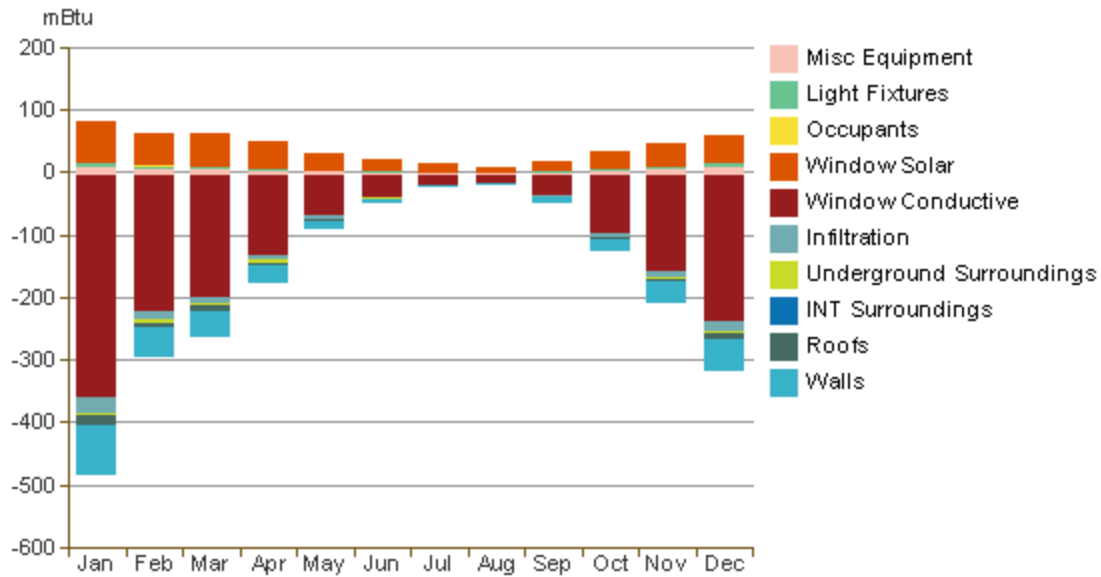
			(Therms)
HVAC	99%	\$33,203	26,536
Domestic Hot Water	1%	\$280	223
		<u>\$33,483</u>	<u>26,759</u>

Energy Use: Electricity

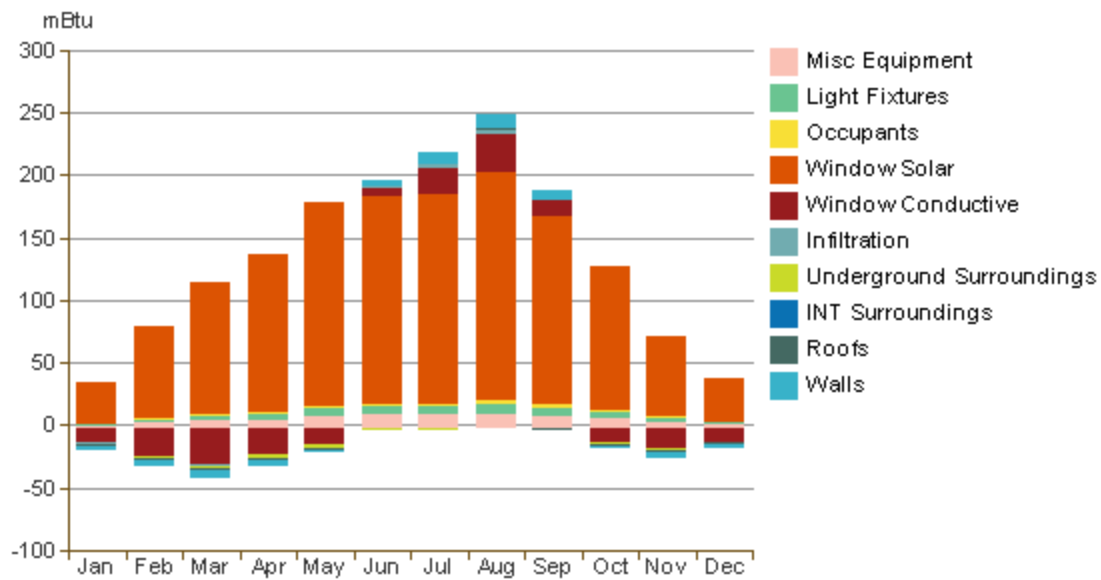


			(kWh)
HVAC	79%	\$44,932	284,379
Lighting	8%	\$4,969	31,451
Misc Equipment	13%	\$7,320	46,331
		<u>\$57,221</u>	<u>362,161</u>

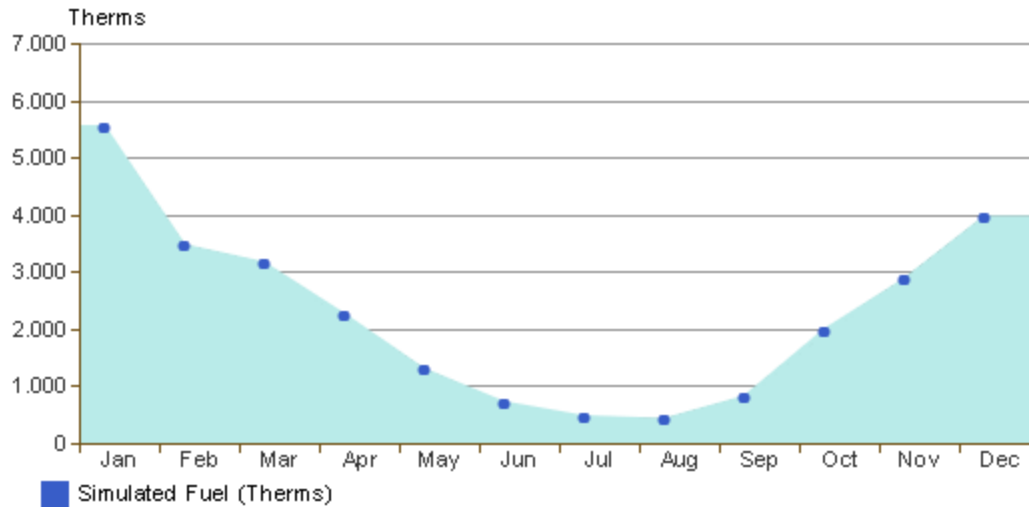
Monthly Heating Load



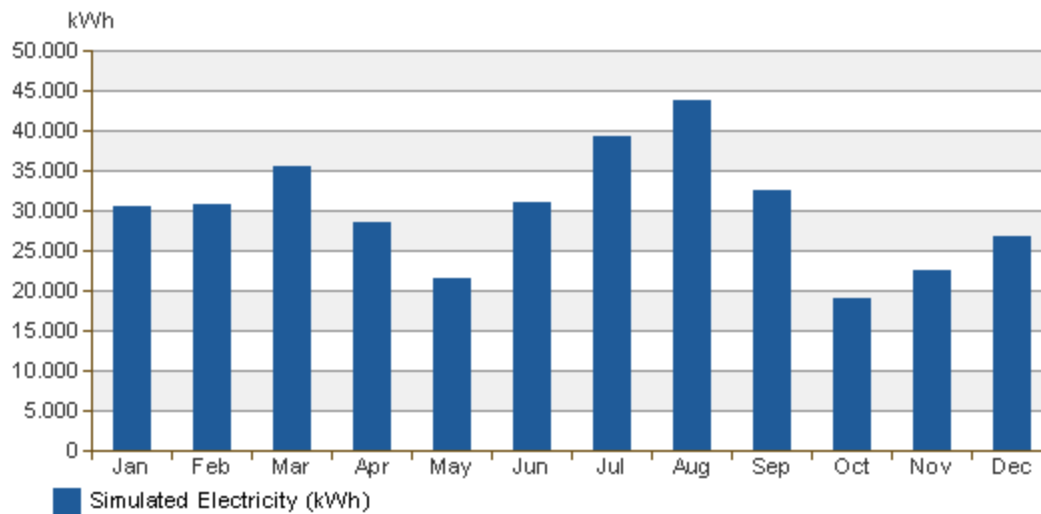
Monthly Cooling Load



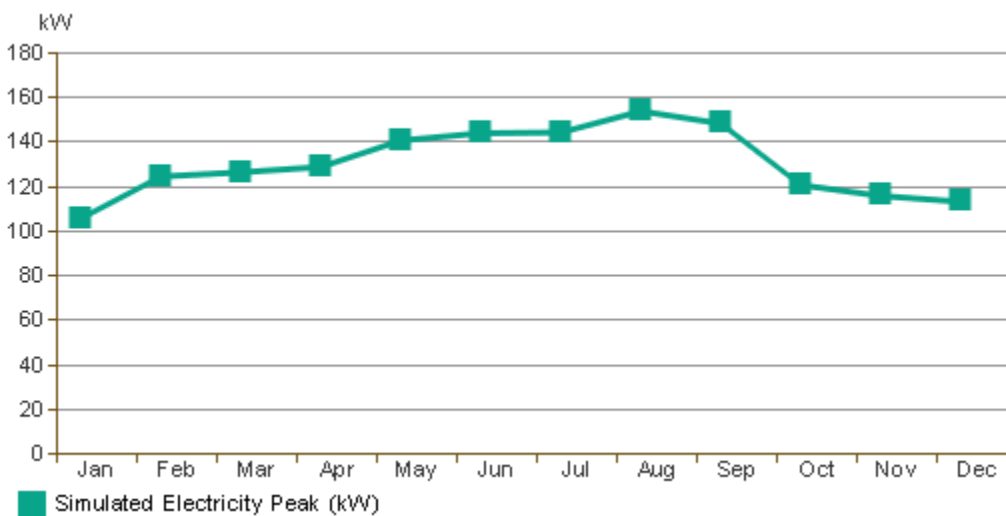
Monthly Fuel Consumption



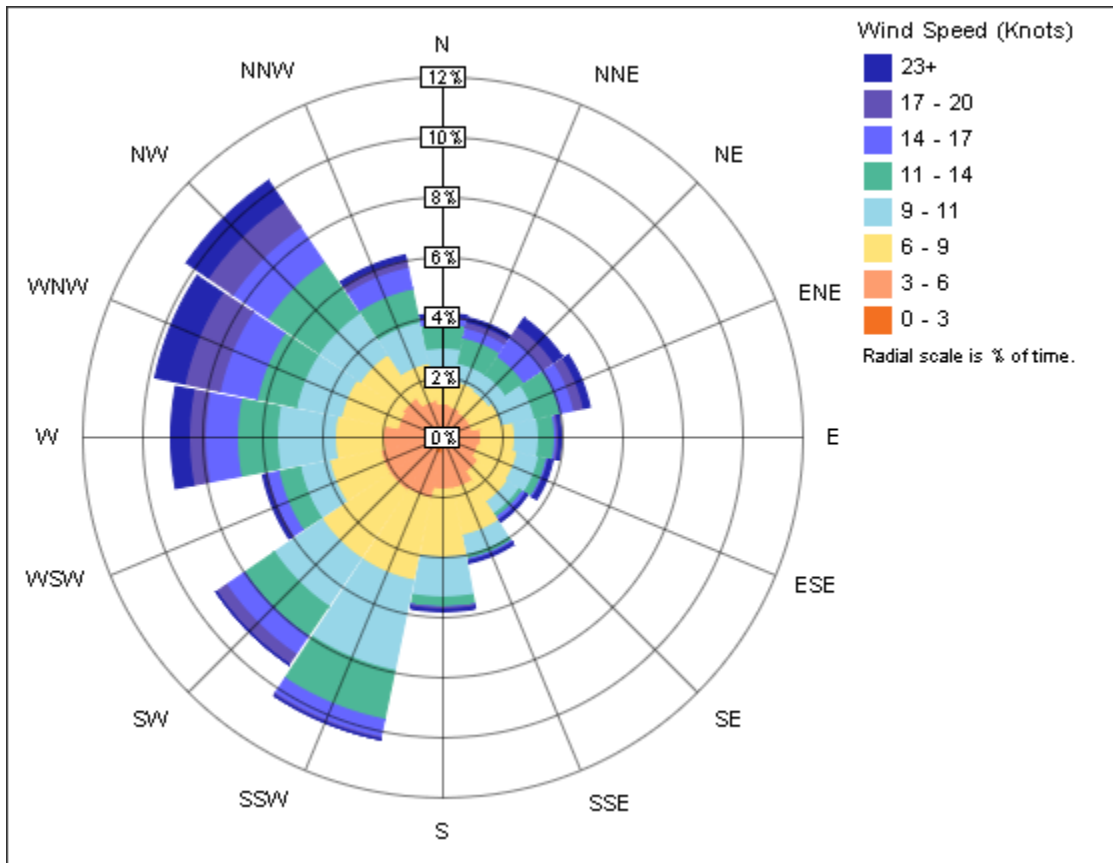
Monthly Electricity Consumption



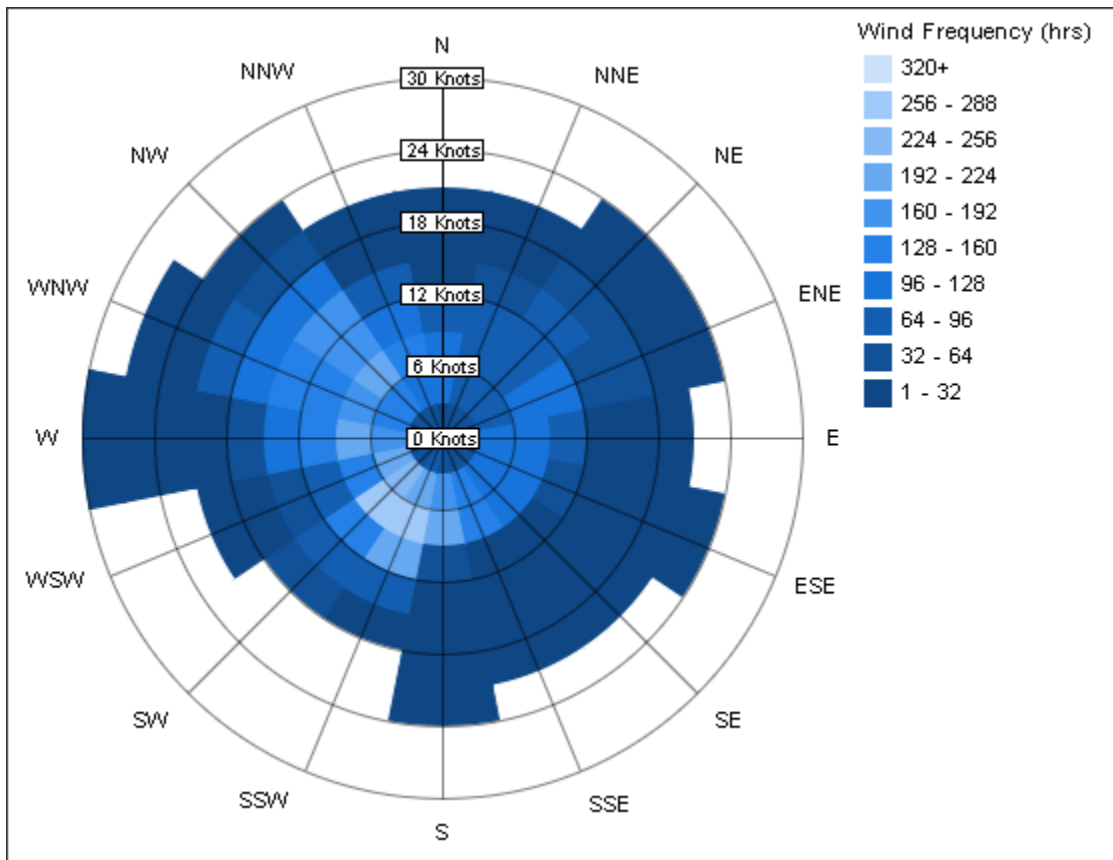
Monthly Peak Demand



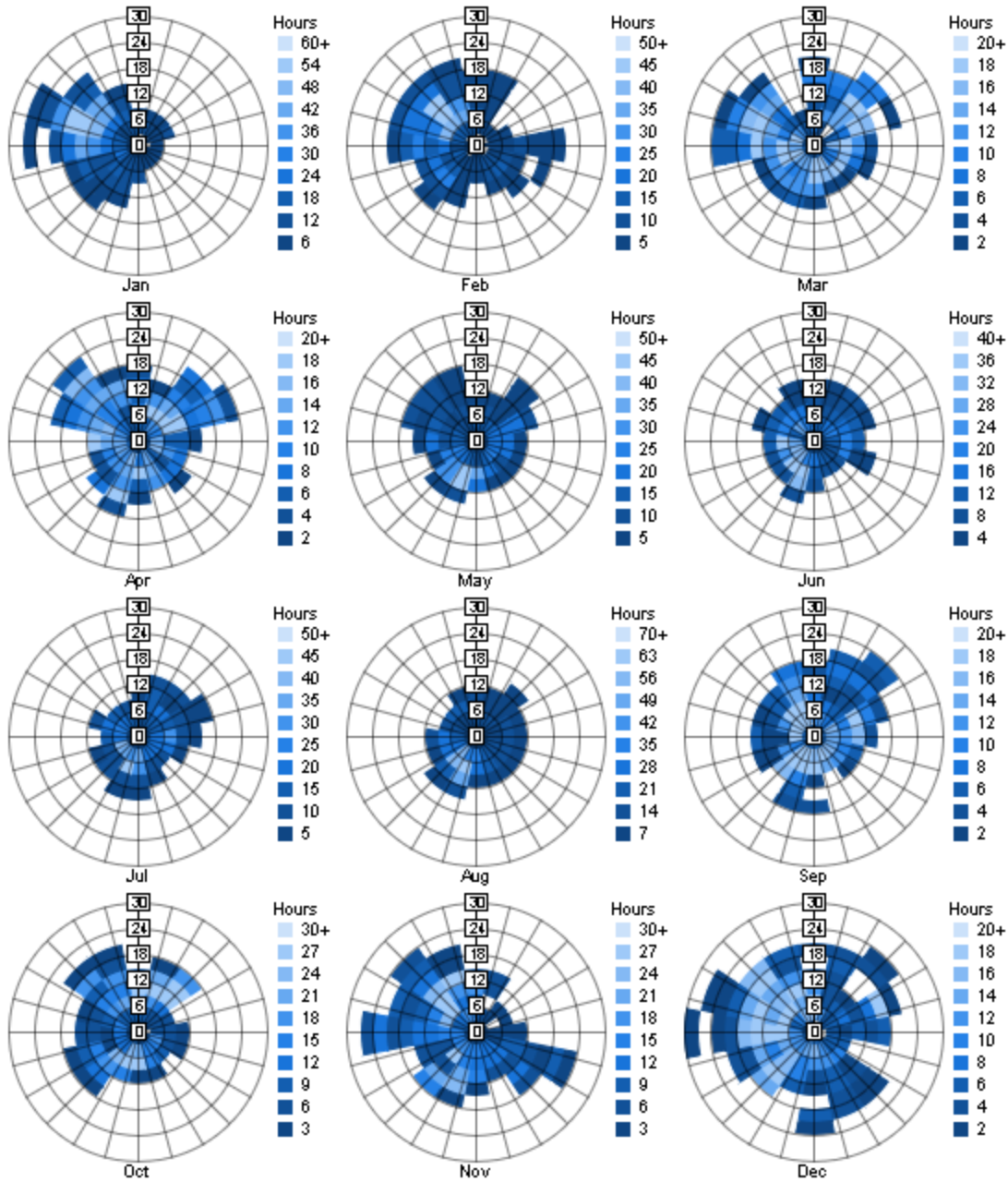
Annual Wind Rose (Speed Distribution)



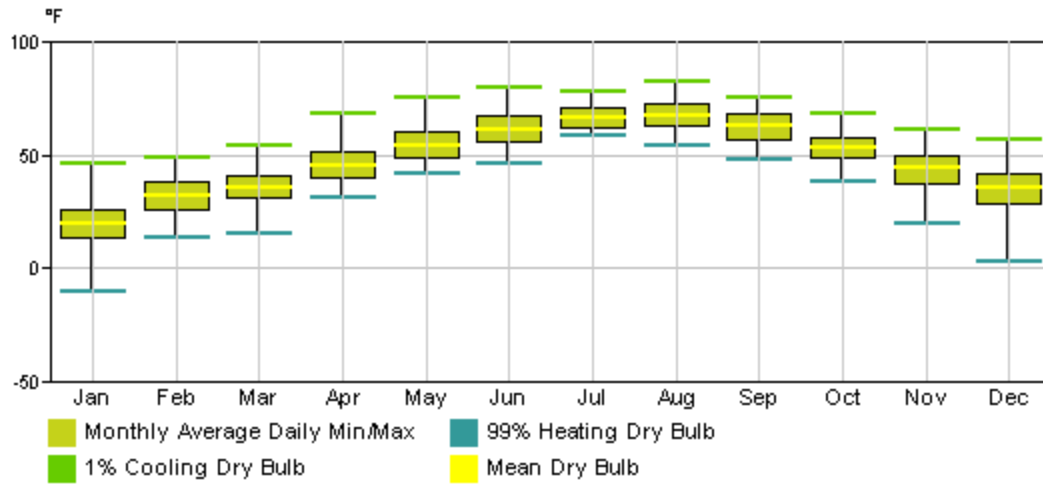
Annual Wind Rose (Frequency Distribution)



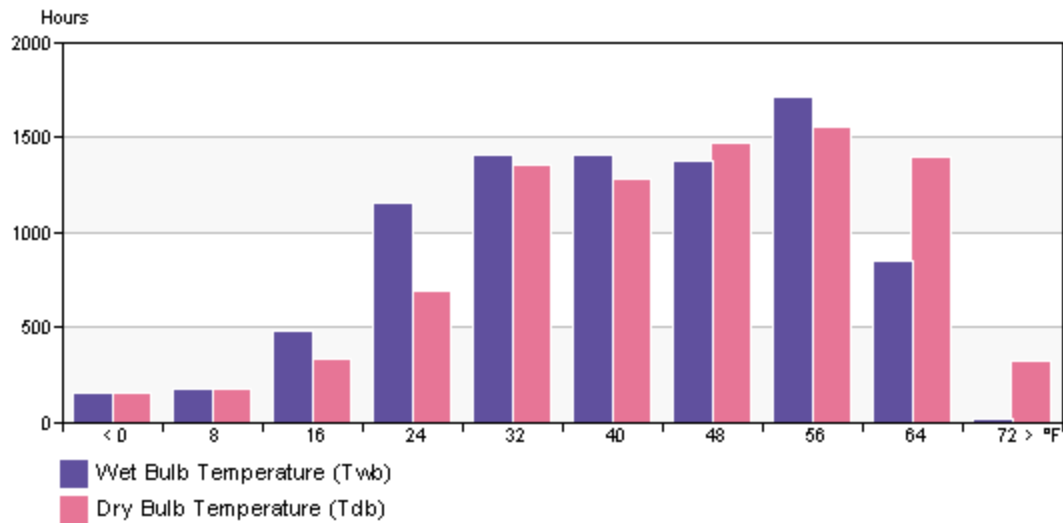
Monthly Wind Roses



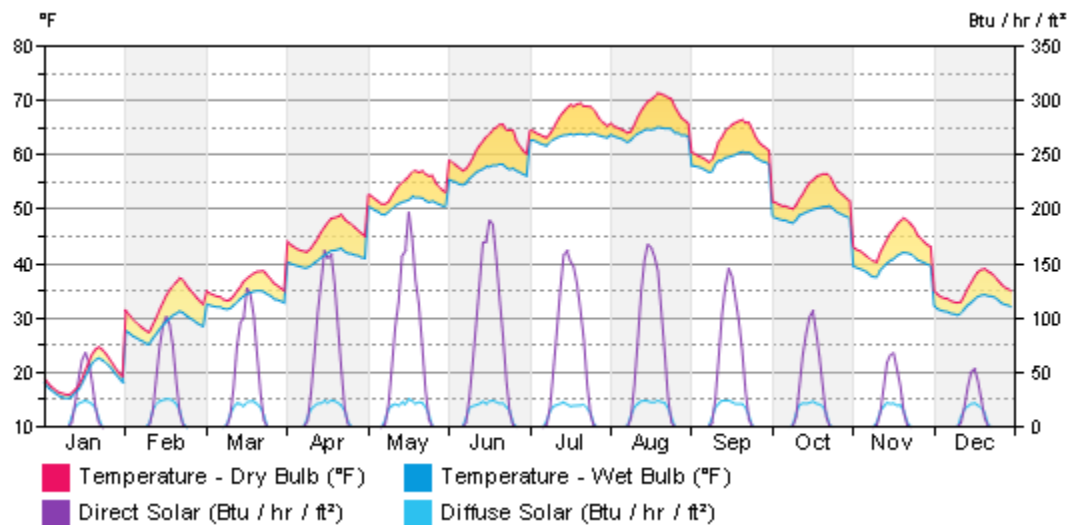
Monthly Design Data



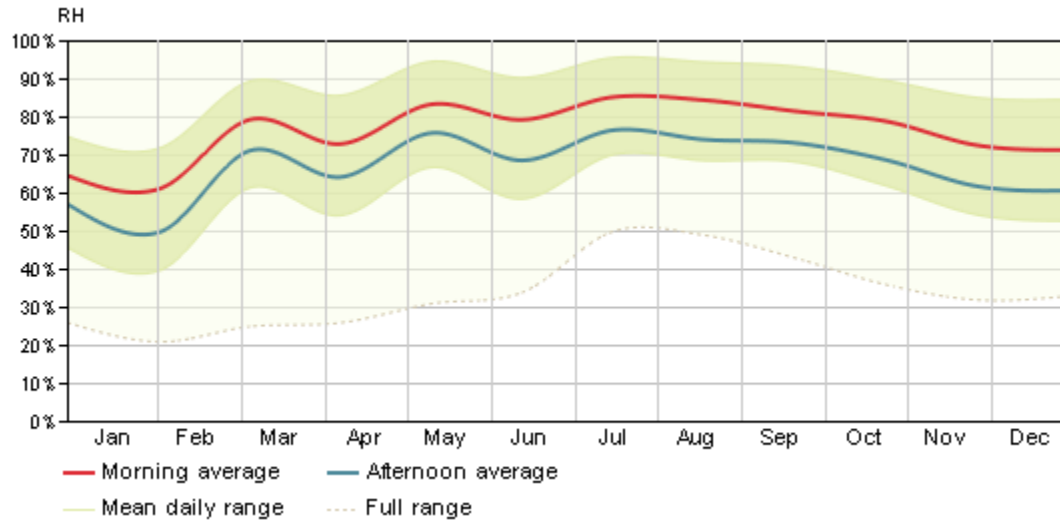
Annual Temperature Bins



Diurnal Weather Averages



Humidity



© Copyright 2011 Autodesk, Inc. All rights reserved. Portions of this software are copyrighted by James J. Hirsch & Associates, the Regents of the University of California, and others.

Revit Conceptual Energy Analysis Data